



**THE NCS**<sup>TM</sup>  
The National Citizen Survey<sup>TM</sup>

## Elk Grove, CA

Technical Appendices  
2015



**NRC**  
National Research Center Inc

2955 Valmont Road Suite 300  
Boulder, Colorado 80301  
n-r-c.com • 303-444-7863

**ICMA**

*Leaders at the Core of Better Communities*

777 North Capitol Street NE Suite 500  
Washington, DC 20002  
icma.org • 800-745-8780

# Contents

Appendix A: Complete Survey Responses .....	1
Appendix B: Benchmark Comparisons .....	23
Appendix C: Detailed Survey Methods .....	36
Appendix D: Survey Materials .....	41

# Appendix A: Complete Survey Responses

## Responses excluding “don’t know”

The following pages contain a complete set of responses to each question on the survey, excluding the “don’t know” responses. The percent of respondents giving a particular response is shown followed by the number of respondents (denoted with “N=”).

Table 1: Question 1

Please rate each of the following aspects of quality of life in Elk Grove:	Excellent		Good		Fair		Poor		Total	
	%	N	%	N	%	N	%	N	%	N
Elk Grove as a place to live	28%	N=78	59%	N=160	12%	N=33	1%	N=2	100%	N=273
Your neighborhood as a place to live	38%	N=104	44%	N=121	16%	N=45	1%	N=3	100%	N=272
Elk Grove as a place to raise children	37%	N=92	49%	N=124	13%	N=32	1%	N=2	100%	N=250
Elk Grove as a place to work	18%	N=37	37%	N=75	31%	N=63	14%	N=28	100%	N=202
Elk Grove as a place to visit	13%	N=35	28%	N=75	40%	N=105	19%	N=50	100%	N=264
Elk Grove as a place to retire	21%	N=49	44%	N=104	24%	N=56	11%	N=25	100%	N=235
The overall quality of life in Elk Grove	16%	N=44	65%	N=176	18%	N=49	1%	N=3	100%	N=272

Table 2: Question 2

Please rate each of the following characteristics as they relate to Elk Grove as a whole:	Excellent		Good		Fair		Poor		Total	
	%	N	%	N	%	N	%	N	%	N
Overall feeling of safety in Elk Grove	17%	N=46	55%	N=152	24%	N=67	4%	N=10	100%	N=274
Overall ease of getting to the places you usually have to visit	17%	N=45	50%	N=137	25%	N=68	8%	N=23	100%	N=273
Quality of overall natural environment in Elk Grove	22%	N=59	53%	N=143	22%	N=61	3%	N=9	100%	N=272
Overall "built environment" of Elk Grove (including overall design, buildings, parks and transportation systems)	20%	N=54	43%	N=117	30%	N=83	7%	N=20	100%	N=273
Health and wellness opportunities in Elk Grove	18%	N=47	51%	N=135	27%	N=72	5%	N=13	100%	N=267
Overall opportunities for education and enrichment	17%	N=43	52%	N=135	27%	N=71	4%	N=9	100%	N=258
Overall economic health of Elk Grove	8%	N=22	60%	N=156	28%	N=73	4%	N=9	100%	N=260
Sense of community	12%	N=33	39%	N=107	42%	N=114	6%	N=18	100%	N=272
Overall image or reputation of Elk Grove	14%	N=36	56%	N=150	25%	N=68	5%	N=12	100%	N=266

Table 3: Question 3

Please indicate how likely or unlikely you are to do each of the following:	Very likely		Somewhat likely		Somewhat unlikely		Very unlikely		Total	
	%	N	%	N	%	N	%	N	%	N
Recommend living in Elk Grove to someone who asks	44%	N=120	46%	N=125	6%	N=15	4%	N=10	100%	N=270
Remain in Elk Grove for the next five years	62%	N=168	25%	N=68	9%	N=25	3%	N=9	100%	N=270

Table 4: Question 4

Please rate how safe or unsafe you feel:	Very safe		Somewhat safe		Neither safe nor unsafe		Somewhat unsafe		Very unsafe		Total	
	%	N	%	N	%	N	%	N	%	N	%	N
In your neighborhood during the day	60%	N=165	30%	N=84	6%	N=17	3%	N=9	0%	N=1	100%	N=275
In Elk Grove’s downtown/commercial area during the day	45%	N=113	47%	N=118	5%	N=13	3%	N=6	0%	N=1	100%	N=251

The National Citizen Survey™

Table 5: Question 5

Please rate each of the following characteristics as they relate to Elk Grove as a whole:	Excellent		Good		Fair		Poor		Total	
Traffic flow on major streets	5%	N=14	30%	N=83	38%	N=103	27%	N=74	100%	N=274
Ease of public parking	17%	N=46	51%	N=137	26%	N=69	6%	N=17	100%	N=269
Ease of travel by car in Elk Grove	15%	N=42	44%	N=121	30%	N=82	11%	N=30	100%	N=274
Ease of travel by public transportation in Elk Grove	8%	N=10	36%	N=43	38%	N=45	18%	N=22	100%	N=120
Ease of travel by bicycle in Elk Grove	18%	N=33	40%	N=74	31%	N=56	11%	N=21	100%	N=183
Ease of walking in Elk Grove	25%	N=64	41%	N=105	29%	N=73	5%	N=13	100%	N=255
Availability of paths and walking trails	20%	N=51	47%	N=120	24%	N=63	9%	N=24	100%	N=258
Air quality	13%	N=34	56%	N=152	26%	N=71	5%	N=15	100%	N=272
Cleanliness of Elk Grove	18%	N=50	56%	N=152	24%	N=64	2%	N=6	100%	N=272
Overall appearance of Elk Grove	19%	N=51	56%	N=152	24%	N=64	2%	N=5	100%	N=273
Public places where people want to spend time	14%	N=36	48%	N=124	29%	N=74	9%	N=23	100%	N=257
Variety of housing options	15%	N=36	43%	N=106	34%	N=84	9%	N=23	100%	N=248
Availability of affordable quality housing	10%	N=25	38%	N=93	35%	N=86	17%	N=41	100%	N=244
Fitness opportunities (including exercise classes and paths or trails, etc.)	24%	N=64	50%	N=130	22%	N=58	4%	N=10	100%	N=262
Recreational opportunities	16%	N=42	41%	N=107	33%	N=86	9%	N=24	100%	N=258
Availability of affordable quality food	20%	N=53	45%	N=122	31%	N=83	5%	N=13	100%	N=272
Availability of affordable quality health care	20%	N=50	48%	N=122	27%	N=68	5%	N=12	100%	N=252
Availability of preventive health services	22%	N=52	46%	N=110	27%	N=63	5%	N=12	100%	N=237
Availability of affordable quality mental health care	14%	N=19	36%	N=48	31%	N=41	18%	N=25	100%	N=133

Table 6: Question 6

Please rate each of the following characteristics as they relate to Elk Grove as a whole:	Excellent		Good		Fair		Poor		Total	
Availability of affordable quality child care/preschool	16%	N=22	41%	N=57	28%	N=38	16%	N=21	100%	N=138
K-12 education	30%	N=61	56%	N=114	11%	N=22	3%	N=5	100%	N=202
Adult educational opportunities	16%	N=28	51%	N=89	26%	N=46	7%	N=12	100%	N=176
Opportunities to attend cultural/arts/music activities	14%	N=33	31%	N=72	35%	N=81	20%	N=47	100%	N=233
Opportunities to participate in religious or spiritual events and activities	28%	N=56	46%	N=92	21%	N=42	5%	N=9	100%	N=198
Employment opportunities	5%	N=11	28%	N=54	37%	N=71	30%	N=59	100%	N=195
Shopping opportunities	18%	N=49	37%	N=100	34%	N=92	10%	N=28	100%	N=269
Cost of living in Elk Grove	6%	N=17	39%	N=104	45%	N=120	10%	N=28	100%	N=268
Overall quality of business and service establishments in Elk Grove	9%	N=23	53%	N=140	34%	N=89	5%	N=12	100%	N=264
Vibrant downtown/commercial area	3%	N=9	28%	N=71	40%	N=104	28%	N=73	100%	N=257
Overall quality of new development in Elk Grove	7%	N=19	42%	N=106	38%	N=97	13%	N=34	100%	N=255
Opportunities to participate in social events and activities	10%	N=25	39%	N=96	42%	N=102	9%	N=23	100%	N=245
Opportunities to volunteer	14%	N=28	46%	N=90	32%	N=63	8%	N=15	100%	N=195
Opportunities to participate in community matters	9%	N=19	40%	N=85	41%	N=86	10%	N=20	100%	N=210
Openness and acceptance of the community toward people of diverse backgrounds	15%	N=36	51%	N=121	32%	N=77	3%	N=6	100%	N=240
Neighborliness of residents in Elk Grove	11%	N=28	35%	N=90	45%	N=116	10%	N=25	100%	N=259

The National Citizen Survey™

Table 7: Question 7

Please indicate whether or not you have done each of the following in the last 12 months.	No		Yes		Total	
	%	N	%	N	%	N
Made efforts to conserve water	4%	N=10	96%	N=264	100%	N=274
Made efforts to make your home more energy efficient	21%	N=58	79%	N=215	100%	N=273
Observed a code violation or other hazard in Elk Grove	41%	N=111	59%	N=159	100%	N=270
Household member was a victim of a crime in Elk Grove	86%	N=234	14%	N=38	100%	N=271
Reported a crime to the police in Elk Grove	74%	N=202	26%	N=71	100%	N=274
Stocked supplies in preparation for an emergency	55%	N=150	45%	N=123	100%	N=273
Campaigned or advocated for an issue, cause or candidate	86%	N=235	14%	N=37	100%	N=273
Contacted the City of Elk Grove (in-person, phone, email or web) for help or information	61%	N=166	39%	N=108	100%	N=274
Contacted Elk Grove elected officials (in-person, phone, email or web) to express your opinion	91%	N=247	9%	N=26	100%	N=273

Table 8: Question 8

In the last 12 months, about how many times, if at all, have you or other household members done each of the following in Elk Grove?	2 times a week or more		2-4 times a month		Once a month or less		Not at all		Total	
	%	N	%	N	%	N	%	N	%	N
Used Elk Grove public libraries or their services	6%	N=18	17%	N=46	33%	N=91	43%	N=118	100%	N=273
Participated in religious or spiritual activities in Elk Grove	15%	N=41	19%	N=51	17%	N=45	50%	N=135	100%	N=272
Attended a City-sponsored event	2%	N=5	6%	N=16	46%	N=125	45%	N=123	100%	N=270
Used bus, rail, subway or other public transportation instead of driving	6%	N=16	3%	N=8	11%	N=30	80%	N=218	100%	N=272
Carpooled with other adults or children instead of driving alone	24%	N=65	23%	N=61	16%	N=43	38%	N=103	100%	N=272
Walked or biked instead of driving	15%	N=41	18%	N=48	26%	N=70	41%	N=113	100%	N=273
Volunteered your time to some group/activity in Elk Grove	8%	N=22	8%	N=23	23%	N=63	61%	N=165	100%	N=273
Participated in a club	6%	N=17	10%	N=26	10%	N=28	74%	N=200	100%	N=271
Talked to or visited with your immediate neighbors	34%	N=91	32%	N=86	29%	N=78	6%	N=16	100%	N=271
Done a favor for a neighbor	18%	N=47	21%	N=56	44%	N=119	18%	N=48	100%	N=270

Table 9: Question 9

Thinking about local public meetings (of local elected officials like City Council or County Commissioners, advisory boards, town halls, HOA, neighborhood watch, etc.), in the last 12 months, about how many times, if at all, have you or other household members attended or watched a local public meeting?	2 times a week or more		2-4 times a month		Once a month or less		Not at all		Total	
	%	N	%	N	%	N	%	N	%	N
Attended a local public meeting	0%	N=1	1%	N=2	17%	N=45	82%	N=224	100%	N=272
Watched (online or on television) a local public meeting	1%	N=3	2%	N=5	18%	N=49	79%	N=216	100%	N=273

Table 10: Question 10

Please rate the quality of each of the following services in Elk Grove:	Excellent		Good		Fair		Poor		Total	
	%	N	%	N	%	N	%	N	%	N
Police/Sheriff services	20%	N=46	54%	N=123	23%	N=52	3%	N=6	100%	N=227
Crime prevention	13%	N=28	55%	N=118	25%	N=54	7%	N=15	100%	N=216
Traffic enforcement	11%	N=28	52%	N=125	23%	N=56	14%	N=35	100%	N=244
Street repair	14%	N=36	48%	N=120	32%	N=80	6%	N=15	100%	N=250
Street cleaning	16%	N=41	45%	N=112	30%	N=75	8%	N=21	100%	N=249
Street lighting	24%	N=62	45%	N=117	26%	N=66	5%	N=14	100%	N=259
Sidewalk maintenance	19%	N=49	47%	N=121	26%	N=67	7%	N=18	100%	N=254
Traffic signal timing	12%	N=33	36%	N=96	32%	N=86	20%	N=54	100%	N=268

The National Citizen Survey™

Please rate the quality of each of the following services in Elk Grove:	Excellent		Good		Fair		Poor		Total	
Bus or transit services	13%	N=17	39%	N=49	39%	N=49	8%	N=11	100%	N=125
Garbage collection	36%	N=93	52%	N=136	11%	N=29	2%	N=4	100%	N=262
Recycling	37%	N=98	49%	N=129	10%	N=27	3%	N=7	100%	N=261
Yard waste pick-up	41%	N=102	45%	N=113	12%	N=30	2%	N=4	100%	N=248
Storm drainage	24%	N=54	56%	N=126	18%	N=41	2%	N=4	100%	N=225
Utility billing	18%	N=47	38%	N=99	30%	N=80	14%	N=36	100%	N=262
Land use, planning and zoning	6%	N=12	40%	N=76	37%	N=71	17%	N=32	100%	N=191
Code enforcement (weeds, abandoned buildings, etc.)	8%	N=17	42%	N=85	36%	N=74	13%	N=27	100%	N=202
Animal control	14%	N=28	57%	N=115	21%	N=43	8%	N=16	100%	N=203
Economic development	10%	N=21	34%	N=68	44%	N=89	11%	N=22	100%	N=201
Public library services	29%	N=55	50%	N=96	20%	N=38	1%	N=2	100%	N=192
Public information services	16%	N=29	50%	N=90	30%	N=54	3%	N=6	100%	N=179
Cable television	11%	N=23	36%	N=75	29%	N=61	24%	N=49	100%	N=208
Emergency preparedness (services that prepare the community for natural disasters or other emergency situations)	8%	N=11	32%	N=46	42%	N=61	19%	N=27	100%	N=145
Preservation of natural areas such as open space, farmlands and greenbelts	20%	N=44	40%	N=88	27%	N=59	13%	N=28	100%	N=220
Elk Grove open space	19%	N=43	32%	N=74	37%	N=84	12%	N=28	100%	N=229
City-sponsored special events	14%	N=29	42%	N=87	35%	N=71	9%	N=18	100%	N=206
Overall customer service by Elk Grove employees (police, receptionists, planners, etc.)	17%	N=39	49%	N=111	31%	N=72	3%	N=7	100%	N=229

Table 11: Question 11

Overall, how would you rate the quality of the services provided by each of the following?	Excellent		Good		Fair		Poor		Total	
The City of Elk Grove	18%	N=44	56%	N=136	22%	N=54	3%	N=8	100%	N=242
The Federal Government	6%	N=14	30%	N=66	43%	N=95	20%	N=44	100%	N=219

Table 12: Question 12

Please rate the following categories of Elk Grove government performance:	Excellent		Good		Fair		Poor		Total	
The value of services for the taxes paid to Elk Grove	8%	N=20	43%	N=101	35%	N=80	13%	N=31	100%	N=232
The overall direction that Elk Grove is taking	10%	N=22	43%	N=101	35%	N=83	12%	N=29	100%	N=235
The job Elk Grove government does at welcoming citizen involvement	8%	N=15	30%	N=58	50%	N=96	12%	N=23	100%	N=192
Overall confidence in Elk Grove government	7%	N=16	37%	N=85	45%	N=105	11%	N=25	100%	N=231
Generally acting in the best interest of the community	8%	N=19	41%	N=94	36%	N=82	14%	N=31	100%	N=226
Being honest	10%	N=19	37%	N=73	43%	N=87	10%	N=20	100%	N=200
Treating all residents fairly	8%	N=16	41%	N=85	41%	N=85	10%	N=20	100%	N=206

Table 13: Question 13

Please rate how important, if at all, you think it is for the Elk Grove community to focus on each of the following in the coming two years:	Essential		Very important		Somewhat important		Not at all important		Total	
Overall feeling of safety in Elk Grove	64%	N=173	32%	N=87	4%	N=10	0%	N=0	100%	N=270
Overall ease of getting to the places you usually have to visit	30%	N=79	55%	N=147	15%	N=40	1%	N=3	100%	N=269
Quality of overall natural environment in Elk Grove	37%	N=98	48%	N=127	13%	N=35	2%	N=4	100%	N=264
Overall "built environment" of Elk Grove (including overall design, buildings, parks and transportation systems)	35%	N=93	48%	N=130	16%	N=43	1%	N=3	100%	N=269

The National Citizen Survey™

Please rate how important, if at all, you think it is for the Elk Grove community to focus on each of the following in the coming two years:	Essential		Very important		Somewhat important		Not at all important		Total	
	Percent	N	Percent	N	Percent	N	Percent	N	Percent	N
Health and wellness opportunities in Elk Grove	32%	N=85	47%	N=125	18%	N=50	3%	N=9	100%	N=268
Overall opportunities for education and enrichment	41%	N=111	41%	N=110	17%	N=44	1%	N=4	100%	N=269
Overall economic health of Elk Grove	46%	N=125	44%	N=118	9%	N=23	1%	N=2	100%	N=269
Sense of community	36%	N=97	43%	N=116	18%	N=48	3%	N=7	100%	N=269

Table 14: Question 14

If someone you knew was considering a move to Elk Grove, what aspects of the City would you highlight to help them decide? (Check all that apply.)	Percent	Number
Outdoor recreation opportunities	48%	N=116
Shopping options	41%	N=101
Rural area	26%	N=65
Sports facility access	29%	N=72
Proximity to Sacramento	74%	N=181
Central proximity between San Francisco and Tahoe	53%	N=130
Employment options	11%	N=27
Housing options	58%	N=141
Support for small businesses	14%	N=35
Community culture	24%	N=59
Quality of schools	70%	N=170
Civic amenities	12%	N=29
Total	100%	N=244

Total may exceed 100% as respondents could select more than one option.

Table 15: Question 15

In what ways do you think Elk Grove can become a more influential presence in the Sacramento region? (Check all that apply.)	Percent	Number
Support creation of regional employment centers	34%	N=78
Streamline the development process for projects	24%	N=56
Increase outreach and marketing of regional benefits	22%	N=51
Pursue trade opportunities in Asia	10%	N=23
Support regional light rail development	43%	N=100
Increase job opportunities within Elk Grove	76%	N=177
Increased coordination with international agencies and organizations	11%	N=27
Support and/or create development opportunities in partnership with UC Davis	39%	N=91
Improve business retention and expansion programs	46%	N=107
Additional/enhanced attractions within Elk Grove	58%	N=136
Increase city population	5%	N=11
Improved direct travel options abroad	16%	N=36
Collaborate on and promote a regional brand	12%	N=27
Incentivize growth in the technology and agriculture sectors	47%	N=108
Total	100%	N=232

Total may exceed 100% as respondents could select more than one option.

The National Citizen Survey™

Table 16: Question 16

In your own words, what one thing do you love most about Elk Grove?	Percent	Number
Small-town feel, quiet/rural, sense of community, diversity/culture	23%	N=47
Quality of schools, family-friendly community, good place to raise children	20%	N=31
Access to shopping/restaurants/amenities	9%	N=18
Safety, police services	10%	N=21
Parks and recreation/community events	8%	N=20
Trees, beautiful/clean/new community	8%	N=13
Location/proximity to other cities, ease of commute	6%	N=10
Other	13%	N=29
Don't know/nothing/complaints or concerns	3%	N=9
<b>Total</b>	<b>100%</b>	<b>N=198</b>

Table 17: Question 17

What types of transit service improvements would you like to see? (Please check all that apply.)	Percent	Number
More direct or express service	37%	N=63
More frequent bus service	35%	N=59
Earlier morning service	22%	N=36
Better lighting at bus stops	36%	N=60
Better information on how to use the bus, bus schedules and routes	49%	N=82
Direct shuttle service to the RT's light rail service (Cosumnes River College or Franklin)	47%	N=79
More park and ride locations	37%	N=62
Later night service	29%	N=48
Fewer transfers required	25%	N=42
<b>Total</b>	<b>100%</b>	<b>N=167</b>

Total may exceed 100% as respondents could select more than one option.

Table 18: Question 18

In terms of Economic Development, please select the top 3 priorities the City should focus on over the next two years:	Percent	Number
Retention and expansion efforts of existing businesses	44%	N=103
Recruitment efforts for new businesses not currently in Elk Grove	51%	N=118
Recruitment specifically of State Agencies/Departments	30%	N=70
Improve the scope and quality of retail offerings	29%	N=68
Bring more jobs to Elk Grove	57%	N=133
Increase non-resident visitation to the City	5%	N=11
Improve dining and entertainment options	44%	N=101
Improve Elk Grove's night life	23%	N=54
<b>Total</b>	<b>100%</b>	<b>N=232</b>

Total may exceed 100% as respondents could select more than one option.



The National Citizen Survey™

Table 19: Question 19

Are you a State of California employee?	Percent	Number
Yes	30%	N=80
No	70%	N=191
Total	100%	N=271

Table 20: Question 20

If yes, do you commute outside the boundaries of Elk Grove to your state job?	Percent	Number
Yes	87%	N=69
No	13%	N=10
Total	100%	N=79

Table 21: Question 21

If yes, how long does your typical work commute take?	Percent	Number
Less than 15 minutes	2%	N=1
15-30 minutes	25%	N=17
30-45 minutes	44%	N=30
45-60 minutes	26%	N=18
More than 60 minutes	3%	N=2
Total	100%	N=68

Table 22: Question 22

How do you typically commute to your State job outside the boundaries of Elk Grove?	Percent	Number
Drive myself, alone	69%	N=43
Carpool	22%	N=14
e-Tran bus	14%	N=9
Bicycle	1%	N=1
Light rail	6%	N=4
Rail	0%	N=0
e-Tran bus then transfer to Regional Transit/Light Rail/Amtrak, etc.	2%	N=1
Other	1%	N=1
Total	100%	N=62

Total may exceed 100% as respondents could select more than one option.

Table 23: Question 23

Would you prefer that more State agencies or departments were located in Elk Grove?	Percent	Number
Yes	97%	N=73
No	3%	N=2
Total	100%	N=75

The National Citizen Survey™

Table 24: Question 24

If a State agency or department other than one you work for were to locate in Elk Grove, how likely would you be to pursue a transfer to that agency?	Percent	Number
Very likely	54%	N=39
Somewhat likely	33%	N=24
Somewhat unlikely	7%	N=5
Very unlikely	6%	N=4
Total	100%	N=72

Table 25: Question D1

How often, if at all, do you do each of the following, considering all of the times you could?	Never		Rarely		Sometimes		Usually		Always		Total	
Recycle at home	1%	N=1	1%	N=3	6%	N=16	16%	N=42	77%	N=207	100%	N=270
Purchase goods or services from a business located in Elk Grove	1%	N=2	0%	N=0	8%	N=23	54%	N=145	37%	N=99	100%	N=270
Eat at least 5 portions of fruits and vegetables a day	2%	N=5	12%	N=33	32%	N=86	37%	N=99	18%	N=48	100%	N=271
Participate in moderate or vigorous physical activity	2%	N=6	8%	N=22	34%	N=93	37%	N=102	18%	N=49	100%	N=271
Read or watch local news (via television, paper, computer, etc.)	0%	N=1	9%	N=25	21%	N=56	24%	N=64	46%	N=124	100%	N=271
Vote in local elections	6%	N=16	9%	N=24	12%	N=33	21%	N=57	52%	N=138	100%	N=268

Table 26: Question D2

Would you say that in general your health is:	Percent	Number
Excellent	18%	N=48
Very good	43%	N=116
Good	32%	N=88
Fair	6%	N=17
Poor	1%	N=2
Total	100%	N=272

Table 27: Question D3

What impact, if any, do you think the economy will have on your family income in the next 6 months? Do you think the impact will be:	Percent	Number
Very positive	7%	N=19
Somewhat positive	22%	N=60
Neutral	60%	N=163
Somewhat negative	8%	N=23
Very negative	2%	N=5
Total	100%	N=270

The National Citizen Survey™

Table 28: Question D4

What is your employment status?	Percent	Number
Working full time for pay	68%	N=185
Working part time for pay	9%	N=25
Unemployed, looking for paid work	2%	N=6
Unemployed, not looking for paid work	1%	N=4
Fully retired	19%	N=51
Total	100%	N=272

Table 29: Question D5

Do you work inside the boundaries of Elk Grove?	Percent	Number
Yes, outside the home	24%	N=63
Yes, from home	5%	N=13
No	71%	N=185
Total	100%	N=261

Table 30: Question D6

How many years have you lived in Elk Grove?	Percent	Number
Less than 2 years	11%	N=29
2 to 5 years	16%	N=45
6 to 10 years	16%	N=43
11 to 20 years	35%	N=96
More than 20 years	22%	N=59
Total	100%	N=272

Table 31: Question D7

Which best describes the building you live in?	Percent	Number
One family house detached from any other houses	86%	N=233
Building with two or more homes (duplex, townhome, apartment or condominium)	14%	N=37
Mobile home	0%	N=0
Other	0%	N=0
Total	100%	N=271

Table 32: Question D8

Is this house, apartment or mobile home...	Percent	Number
Rented	25%	N=69
Owned	75%	N=203
Total	100%	N=273

The National Citizen Survey™

Table 33: Question D9

About how much is your monthly housing cost for the place you live (including rent, mortgage payment, property tax, property insurance and homeowners' association (HOA) fees)?	Percent	Number
Less than \$300 per month	2%	N=6
\$300 to \$599 per month	3%	N=9
\$600 to \$999 per month	7%	N=19
\$1,000 to \$1,499 per month	27%	N=72
\$1,500 to \$2,499 per month	41%	N=109
\$2,500 or more per month	19%	N=49
Total	100%	N=264

Table 34: Question D10

Do any children 17 or under live in your household?	Percent	Number
No	56%	N=151
Yes	44%	N=121
Total	100%	N=272

Table 35: Question D11

Are you or any other members of your household aged 65 or older?	Percent	Number
No	77%	N=210
Yes	23%	N=61
Total	100%	N=271

Table 36: Question D12

How much do you anticipate your household's total income before taxes will be for the current year? (Please include in your total income money from all sources for all persons living in your household.)	Percent	Number
Less than \$25,000	9%	N=23
\$25,000 to \$49,999	14%	N=37
\$50,000 to \$99,999	27%	N=71
\$100,000 to \$149,999	26%	N=68
\$150,000 or more	24%	N=62
Total	100%	N=261

Table 37: Question D13

Are you Spanish, Hispanic or Latino?	Percent	Number
No, not Spanish, Hispanic or Latino	81%	N=219
Yes, I consider myself to be Spanish, Hispanic or Latino	19%	N=52
Total	100%	N=270

The National Citizen Survey™

Table 38: Question D14

What is your race? (Mark one or more races to indicate what race(s) you consider yourself to be.)	Percent	Number
American Indian or Alaskan Native	1%	N=3
Asian, Asian Indian or Pacific Islander	29%	N=78
Black or African American	8%	N=21
White	55%	N=147
Other	14%	N=37

Total may exceed 100% as respondents could select more than one option.

Table 39: Question D15

In which category is your age?	Percent	Number
18 to 24 years	1%	N=3
25 to 34 years	28%	N=75
35 to 44 years	18%	N=49
45 to 54 years	26%	N=70
55 to 64 years	12%	N=32
65 to 74 years	9%	N=26
75 years or older	6%	N=17
Total	100%	N=272

Table 40: Question D16

What is your sex?	Percent	Number
Female	53%	N=144
Male	47%	N=128
Total	100%	N=272

Table 41: Question D17

Do you consider a cell phone or landline your primary telephone number?	Percent	Number
Cell	64%	N=173
Land line	15%	N=42
Both	21%	N=58
Total	100%	N=273

The National Citizen Survey™

Responses including “don’t know”

The following pages contain a complete set of responses to each question on the survey, including the “don’t know” responses. The percent of respondents giving a particular response is shown followed by the number of respondents (denoted with “N=”).

Table 42: Question 1

Please rate each of the following aspects of quality of life in Elk Grove:	Excellent		Good		Fair		Poor		Don't know		Total	
Elk Grove as a place to live	28%	N=78	59%	N=160	12%	N=33	1%	N=2	0%	N=0	100%	N=273
Your neighborhood as a place to live	38%	N=104	44%	N=121	16%	N=45	1%	N=3	0%	N=0	100%	N=272
Elk Grove as a place to raise children	34%	N=92	45%	N=124	12%	N=32	1%	N=2	8%	N=22	100%	N=272
Elk Grove as a place to work	14%	N=37	28%	N=75	23%	N=63	10%	N=28	26%	N=69	100%	N=271
Elk Grove as a place to visit	13%	N=35	27%	N=75	39%	N=105	18%	N=50	3%	N=8	100%	N=272
Elk Grove as a place to retire	18%	N=49	39%	N=104	21%	N=56	9%	N=25	13%	N=34	100%	N=269
The overall quality of life in Elk Grove	16%	N=44	65%	N=176	18%	N=49	1%	N=3	0%	N=0	100%	N=272

Table 43: Question 2

Please rate each of the following characteristics as they relate to Elk Grove as a whole:	Excellent		Good		Fair		Poor		Don't know		Total	
Overall feeling of safety in Elk Grove	17%	N=46	55%	N=152	24%	N=67	4%	N=10	0%	N=0	100%	N=274
Overall ease of getting to the places you usually have to visit	17%	N=45	50%	N=137	25%	N=68	8%	N=23	1%	N=2	100%	N=275
Quality of overall natural environment in Elk Grove	21%	N=59	52%	N=143	22%	N=61	3%	N=9	0%	N=1	100%	N=273
Overall "built environment" of Elk Grove (including overall design, buildings, parks and transportation systems)	19%	N=54	43%	N=117	30%	N=83	7%	N=20	1%	N=2	100%	N=275
Health and wellness opportunities in Elk Grove	17%	N=47	49%	N=135	26%	N=72	5%	N=13	3%	N=7	100%	N=274
Overall opportunities for education and enrichment	16%	N=43	50%	N=135	26%	N=71	3%	N=9	5%	N=14	100%	N=272
Overall economic health of Elk Grove	8%	N=22	57%	N=156	27%	N=73	3%	N=9	5%	N=15	100%	N=275
Sense of community	12%	N=33	39%	N=107	42%	N=114	6%	N=18	1%	N=2	100%	N=274
Overall image or reputation of Elk Grove	13%	N=36	55%	N=150	25%	N=68	5%	N=12	2%	N=5	100%	N=270

Table 44: Question 3

Please indicate how likely or unlikely you are to do each of the following:	Very likely		Somewhat likely		Somewhat unlikely		Very unlikely		Don't know		Total	
Recommend living in Elk Grove to someone who asks	44%	N=120	46%	N=125	6%	N=15	4%	N=10	1%	N=4	100%	N=274
Remain in Elk Grove for the next five years	62%	N=168	25%	N=68	9%	N=25	3%	N=9	1%	N=2	100%	N=272

Table 45: Question 4

Please rate how safe or unsafe you feel:	Very safe		Somewhat safe		Neither safe nor unsafe		Somewhat unsafe		Very unsafe		Don't know		Total	
In your neighborhood during the day	60%	N=165	30%	N=84	6%	N=17	3%	N=9	0%	N=1	0%	N=0	100%	N=275
In Elk Grove's downtown/commercial area during the day	41%	N=113	43%	N=118	5%	N=13	2%	N=6	0%	N=1	8%	N=22	100%	N=274

Table 46: Question 5

Please rate each of the following characteristics as they relate to Elk Grove as a whole:	Excellent		Good		Fair		Poor		Don't know		Total	
Traffic flow on major streets	5%	N=14	30%	N=83	38%	N=103	27%	N=74	0%	N=0	100%	N=274
Ease of public parking	17%	N=46	50%	N=137	25%	N=69	6%	N=17	2%	N=5	100%	N=274
Ease of travel by car in Elk Grove	15%	N=42	44%	N=121	30%	N=82	11%	N=30	0%	N=0	100%	N=275

The National Citizen Survey™

Please rate each of the following characteristics as they relate to Elk Grove as a whole:	Excellent		Good		Fair		Poor		Don't know		Total	
	%	N	%	N	%	N	%	N	%	N	%	N
Ease of travel by public transportation in Elk Grove	4%	N=10	16%	N=43	17%	N=45	8%	N=22	56%	N=153	100%	N=273
Ease of travel by bicycle in Elk Grove	12%	N=33	27%	N=74	21%	N=56	8%	N=21	32%	N=86	100%	N=270
Ease of walking in Elk Grove	24%	N=64	39%	N=105	27%	N=73	5%	N=13	6%	N=16	100%	N=270
Availability of paths and walking trails	18%	N=51	44%	N=120	23%	N=63	9%	N=24	6%	N=16	100%	N=275
Air quality	12%	N=34	55%	N=152	26%	N=71	5%	N=15	1%	N=3	100%	N=275
Cleanliness of Elk Grove	18%	N=50	56%	N=152	24%	N=64	2%	N=6	0%	N=0	100%	N=272
Overall appearance of Elk Grove	19%	N=51	56%	N=152	24%	N=64	2%	N=5	0%	N=0	100%	N=273
Public places where people want to spend time	13%	N=36	46%	N=124	27%	N=74	8%	N=23	5%	N=13	100%	N=271
Variety of housing options	13%	N=36	39%	N=106	31%	N=84	8%	N=23	8%	N=22	100%	N=270
Availability of affordable quality housing	9%	N=25	34%	N=93	31%	N=86	15%	N=41	11%	N=29	100%	N=273
Fitness opportunities (including exercise classes and paths or trails, etc.)	23%	N=64	48%	N=130	21%	N=58	4%	N=10	4%	N=11	100%	N=273
Recreational opportunities	15%	N=42	39%	N=107	31%	N=86	9%	N=24	6%	N=16	100%	N=274
Availability of affordable quality food	19%	N=53	45%	N=122	30%	N=83	5%	N=13	1%	N=2	100%	N=274
Availability of affordable quality health care	18%	N=50	45%	N=122	25%	N=68	5%	N=12	8%	N=20	100%	N=272
Availability of preventive health services	19%	N=52	40%	N=110	23%	N=63	4%	N=12	13%	N=36	100%	N=273
Availability of affordable quality mental health care	7%	N=19	18%	N=48	15%	N=41	9%	N=25	51%	N=141	100%	N=274

Table 47: Question 6

Please rate each of the following characteristics as they relate to Elk Grove as a whole:	Excellent		Good		Fair		Poor		Don't know		Total	
	%	N	%	N	%	N	%	N	%	N	%	N
Availability of affordable quality child care/preschool	8%	N=22	21%	N=57	14%	N=38	8%	N=21	50%	N=136	100%	N=274
K-12 education	22%	N=61	42%	N=114	8%	N=22	2%	N=5	26%	N=71	100%	N=272
Adult educational opportunities	10%	N=28	33%	N=89	17%	N=46	5%	N=12	35%	N=96	100%	N=272
Opportunities to attend cultural/arts/music activities	12%	N=33	26%	N=72	30%	N=81	17%	N=47	15%	N=41	100%	N=273
Opportunities to participate in religious or spiritual events and activities	20%	N=56	34%	N=92	15%	N=42	3%	N=9	27%	N=75	100%	N=273
Employment opportunities	4%	N=11	20%	N=54	26%	N=71	22%	N=59	28%	N=77	100%	N=272
Shopping opportunities	18%	N=49	37%	N=100	34%	N=92	10%	N=28	0%	N=0	100%	N=269
Cost of living in Elk Grove	6%	N=17	39%	N=104	45%	N=120	10%	N=28	0%	N=0	100%	N=269
Overall quality of business and service establishments in Elk Grove	8%	N=23	52%	N=140	33%	N=89	4%	N=12	2%	N=6	100%	N=270
Vibrant downtown/commercial area	3%	N=9	26%	N=71	38%	N=104	27%	N=73	6%	N=16	100%	N=273
Overall quality of new development in Elk Grove	7%	N=19	39%	N=106	35%	N=97	13%	N=34	6%	N=17	100%	N=273
Opportunities to participate in social events and activities	9%	N=25	35%	N=96	37%	N=102	8%	N=23	11%	N=29	100%	N=274
Opportunities to volunteer	10%	N=28	33%	N=90	23%	N=63	5%	N=15	28%	N=78	100%	N=273
Opportunities to participate in community matters	7%	N=19	31%	N=85	32%	N=86	8%	N=20	22%	N=60	100%	N=270
Openness and acceptance of the community toward people of diverse backgrounds	13%	N=36	45%	N=121	28%	N=77	2%	N=6	11%	N=31	100%	N=271
Neighborliness of residents in Elk Grove	10%	N=28	33%	N=90	43%	N=116	9%	N=25	4%	N=12	100%	N=271

Table 48: Question 7

Please indicate whether or not you have done each of the following in the last 12 months.	No		Yes		Total	
	%	N	%	N	%	N
Made efforts to conserve water	4%	N=10	96%	N=264	100%	N=274
Made efforts to make your home more energy efficient	21%	N=58	79%	N=215	100%	N=273
Observed a code violation or other hazard in Elk Grove	41%	N=111	59%	N=159	100%	N=270

The National Citizen Survey™

Please indicate whether or not you have done each of the following in the last 12 months.	No		Yes		Total	
Household member was a victim of a crime in Elk Grove	86%	N=234	14%	N=38	100%	N=271
Reported a crime to the police in Elk Grove	74%	N=202	26%	N=71	100%	N=274
Stocked supplies in preparation for an emergency	55%	N=150	45%	N=123	100%	N=273
Campaigned or advocated for an issue, cause or candidate	86%	N=235	14%	N=37	100%	N=273
Contacted the City of Elk Grove (in-person, phone, email or web) for help or information	61%	N=166	39%	N=108	100%	N=274
Contacted Elk Grove elected officials (in-person, phone, email or web) to express your opinion	91%	N=247	9%	N=26	100%	N=273

Table 49: Question 8

In the last 12 months, about how many times, if at all, have you or other household members done each of the following in Elk Grove?	2 times a week or more		2-4 times a month		Once a month or less		Not at all		Total	
Used Elk Grove public libraries or their services	6%	N=18	17%	N=46	33%	N=91	43%	N=118	100%	N=273
Participated in religious or spiritual activities in Elk Grove	15%	N=41	19%	N=51	17%	N=45	50%	N=135	100%	N=272
Attended a City-sponsored event	2%	N=5	6%	N=16	46%	N=125	45%	N=123	100%	N=270
Used bus, rail, subway or other public transportation instead of driving	6%	N=16	3%	N=8	11%	N=30	80%	N=218	100%	N=272
Carpooled with other adults or children instead of driving alone	24%	N=65	23%	N=61	16%	N=43	38%	N=103	100%	N=272
Walked or biked instead of driving	15%	N=41	18%	N=48	26%	N=70	41%	N=113	100%	N=273
Volunteered your time to some group/activity in Elk Grove	8%	N=22	8%	N=23	23%	N=63	61%	N=165	100%	N=273
Participated in a club	6%	N=17	10%	N=26	10%	N=28	74%	N=200	100%	N=271
Talked to or visited with your immediate neighbors	34%	N=91	32%	N=86	29%	N=78	6%	N=16	100%	N=271
Done a favor for a neighbor	18%	N=47	21%	N=56	44%	N=119	18%	N=48	100%	N=270

Table 50: Question 9

Thinking about local public meetings (of local elected officials like City Council or County Commissioners, advisory boards, town halls, HOA, neighborhood watch, etc.), in the last 12 months, about how many times, if at all, have you or other household members attended or watched a local public meeting?	2 times a week or more		2-4 times a month		Once a month or less		Not at all		Total	
Attended a local public meeting	0%	N=1	1%	N=2	17%	N=45	82%	N=224	100%	N=272
Watched (online or on television) a local public meeting	1%	N=3	2%	N=5	18%	N=49	79%	N=216	100%	N=273

Table 51: Question 10

Please rate the quality of each of the following services in Elk Grove:	Excellent		Good		Fair		Poor		Don't know		Total	
Police/Sheriff services	17%	N=46	46%	N=123	19%	N=52	2%	N=6	16%	N=42	100%	N=269
Crime prevention	11%	N=28	45%	N=118	21%	N=54	6%	N=15	18%	N=48	100%	N=263
Traffic enforcement	10%	N=28	47%	N=125	21%	N=56	13%	N=35	9%	N=26	100%	N=269
Street repair	13%	N=36	44%	N=120	29%	N=80	6%	N=15	7%	N=20	100%	N=270
Street cleaning	15%	N=41	41%	N=112	28%	N=75	8%	N=21	8%	N=22	100%	N=271
Street lighting	23%	N=62	44%	N=117	25%	N=66	5%	N=14	3%	N=9	100%	N=268
Sidewalk maintenance	18%	N=49	45%	N=121	25%	N=67	7%	N=18	5%	N=14	100%	N=269
Traffic signal timing	12%	N=33	35%	N=96	32%	N=86	20%	N=54	1%	N=2	100%	N=271
Bus or transit services	6%	N=17	18%	N=49	18%	N=49	4%	N=11	53%	N=144	100%	N=269
Garbage collection	35%	N=93	50%	N=136	11%	N=29	2%	N=4	3%	N=7	100%	N=269
Recycling	36%	N=98	48%	N=129	10%	N=27	3%	N=7	3%	N=8	100%	N=269
Yard waste pick-up	38%	N=102	42%	N=113	11%	N=30	2%	N=4	8%	N=21	100%	N=269



The National Citizen Survey™

Please rate the quality of each of the following services in Elk Grove:	Excellent		Good		Fair		Poor		Don't know		Total	
	%	N	%	N	%	N	%	N	%	N	%	N
Storm drainage	20%	N=54	46%	N=126	15%	N=41	1%	N=4	17%	N=46	100%	N=270
Utility billing	18%	N=47	37%	N=99	29%	N=80	13%	N=36	3%	N=8	100%	N=270
Land use, planning and zoning	5%	N=12	28%	N=76	26%	N=71	12%	N=32	29%	N=79	100%	N=270
Code enforcement (weeds, abandoned buildings, etc.)	6%	N=17	32%	N=85	28%	N=74	10%	N=27	24%	N=65	100%	N=268
Animal control	10%	N=28	42%	N=115	16%	N=43	6%	N=16	25%	N=68	100%	N=271
Economic development	8%	N=21	25%	N=68	33%	N=89	8%	N=22	25%	N=68	100%	N=269
Public library services	20%	N=55	36%	N=96	14%	N=38	1%	N=2	29%	N=78	100%	N=270
Public information services	11%	N=29	34%	N=90	21%	N=54	2%	N=6	33%	N=86	100%	N=265
Cable television	8%	N=23	28%	N=75	23%	N=61	18%	N=49	22%	N=59	100%	N=267
Emergency preparedness (services that prepare the community for natural disasters or other emergency situations)	4%	N=11	17%	N=46	23%	N=61	10%	N=27	46%	N=124	100%	N=269
Preservation of natural areas such as open space, farmlands and greenbelts	17%	N=44	33%	N=88	23%	N=59	11%	N=28	16%	N=43	100%	N=264
Elk Grove open space	16%	N=43	28%	N=74	31%	N=84	10%	N=28	15%	N=40	100%	N=268
City-sponsored special events	11%	N=29	33%	N=87	27%	N=71	7%	N=18	23%	N=62	100%	N=268
Overall customer service by Elk Grove employees (police, receptionists, planners, etc.)	14%	N=39	42%	N=111	27%	N=72	3%	N=7	15%	N=39	100%	N=268

Table 52: Question 11

Overall, how would you rate the quality of the services provided by each of the following?	Excellent		Good		Fair		Poor		Don't know		Total	
	%	N	%	N	%	N	%	N	%	N	%	N
The City of Elk Grove	16%	N=44	51%	N=136	20%	N=54	3%	N=8	10%	N=27	100%	N=269
The Federal Government	5%	N=14	24%	N=66	35%	N=95	16%	N=44	19%	N=50	100%	N=269

Table 53: Question 12

Please rate the following categories of Elk Grove government performance:	Excellent		Good		Fair		Poor		Don't know		Total	
	%	N	%	N	%	N	%	N	%	N	%	N
The value of services for the taxes paid to Elk Grove	7%	N=20	37%	N=101	30%	N=80	12%	N=31	14%	N=37	100%	N=269
The overall direction that Elk Grove is taking	8%	N=22	38%	N=101	31%	N=83	11%	N=29	12%	N=33	100%	N=268
The job Elk Grove government does at welcoming citizen involvement	6%	N=15	21%	N=58	36%	N=96	9%	N=23	28%	N=76	100%	N=269
Overall confidence in Elk Grove government	6%	N=16	32%	N=85	39%	N=105	9%	N=25	14%	N=37	100%	N=268
Generally acting in the best interest of the community	7%	N=19	35%	N=94	31%	N=82	12%	N=31	16%	N=43	100%	N=269
Being honest	7%	N=19	27%	N=73	32%	N=87	8%	N=20	26%	N=69	100%	N=269
Treating all residents fairly	6%	N=16	32%	N=85	32%	N=85	7%	N=20	23%	N=63	100%	N=269

Table 54: Question 13

Please rate how important, if at all, you think it is for the Elk Grove community to focus on each of the following in the coming two years:	Essential		Very important		Somewhat important		Not at all important		Total	
	%	N	%	N	%	N	%	N	%	N
Overall feeling of safety in Elk Grove	64%	N=173	32%	N=87	4%	N=10	0%	N=0	100%	N=270
Overall ease of getting to the places you usually have to visit	30%	N=79	55%	N=147	15%	N=40	1%	N=3	100%	N=269
Quality of overall natural environment in Elk Grove	37%	N=98	48%	N=127	13%	N=35	2%	N=4	100%	N=264
Overall "built environment" of Elk Grove (including overall design, buildings, parks and transportation systems)	35%	N=93	48%	N=130	16%	N=43	1%	N=3	100%	N=269
Health and wellness opportunities in Elk Grove	32%	N=85	47%	N=125	18%	N=50	3%	N=9	100%	N=268
Overall opportunities for education and enrichment	41%	N=111	41%	N=110	17%	N=44	1%	N=4	100%	N=269

The National Citizen Survey™

Please rate how important, if at all, you think it is for the Elk Grove community to focus on each of the following in the coming two years:	Essential		Very important		Somewhat important		Not at all important		Total	
	Percent	N	Percent	N	Percent	N	Percent	N	Percent	N
Overall economic health of Elk Grove	46%	N=125	44%	N=118	9%	N=23	1%	N=2	100%	N=269
Sense of community	36%	N=97	43%	N=116	18%	N=48	3%	N=7	100%	N=269

Table 55: Question 14

If someone you knew was considering a move to Elk Grove, what aspects of the City would you highlight to help them decide? (Check all that apply.)	Percent	Number
Outdoor recreation opportunities	48%	N=116
Shopping options	41%	N=101
Rural area	26%	N=65
Sports facility access	29%	N=72
Proximity to Sacramento	74%	N=181
Central proximity between San Francisco and Tahoe	53%	N=130
Employment options	11%	N=27
Housing options	58%	N=141
Support for small businesses	14%	N=35
Community culture	24%	N=59
Quality of schools	70%	N=170
Civic amenities	12%	N=29
Total	100%	N=244

Total may exceed 100% as respondents could select more than one option.

Table 56: Question 15

In what ways do you think Elk Grove can become a more influential presence in the Sacramento region? (Check all that apply.)	Percent	Number
Support creation of regional employment centers	34%	N=78
Streamline the development process for projects	24%	N=56
Increase outreach and marketing of regional benefits	22%	N=51
Pursue trade opportunities in Asia	10%	N=23
Support regional light rail development	43%	N=100
Increase job opportunities within Elk Grove	76%	N=177
Increased coordination with international agencies and organizations	11%	N=27
Support and/or create development opportunities in partnership with UC Davis	39%	N=91
Improve business retention and expansion programs	46%	N=107
Additional/enhanced attractions within Elk Grove	58%	N=136
Increase city population	5%	N=11
Improved direct travel options abroad	16%	N=36
Collaborate on and promote a regional brand	12%	N=27
Incentivize growth in the technology and agriculture sectors	47%	N=108
Total	100%	N=232

Total may exceed 100% as respondents could select more than one option.

The National Citizen Survey™

Table 57: Question 16

In your own words, what one thing do you love most about Elk Grove?	Percent	Number
Small-town feel, quiet/rural, sense of community, diversity/culture	23%	N=47
Quality of schools, family-friendly community, good place to raise children	20%	N=31
Access to shopping/restaurants/amenities	9%	N=18
Safety, police services	10%	N=21
Parks and recreation/community events	8%	N=20
Trees, beautiful/clean/new community	8%	N=13
Location/proximity to other cities, ease of commute	6%	N=10
Other	13%	N=29
Don't know/nothing/complaints or concerns	3%	N=9
<b>Total</b>	<b>100%</b>	<b>N=198</b>

Table 58: Question 17

What types of transit service improvements would you like to see? (Please check all that apply.)	Percent	Number
More direct or express service	37%	N=63
More frequent bus service	35%	N=59
Earlier morning service	22%	N=36
Better lighting at bus stops	36%	N=60
Better information on how to use the bus, bus schedules and routes	49%	N=82
Direct shuttle service to the RT's light rail service (Cosumnes River College or Franklin)	47%	N=79
More park and ride locations	37%	N=62
Later night service	29%	N=48
Fewer transfers required	25%	N=42
<b>Total</b>	<b>100%</b>	<b>N=167</b>

Total may exceed 100% as respondents could select more than one option.

Table 59: Question 18

In terms of Economic Development, please select the top 3 priorities the City should focus on over the next two years:	Percent	Number
Retention and expansion efforts of existing businesses	44%	N=103
Recruitment efforts for new businesses not currently in Elk Grove	51%	N=118
Recruitment specifically of State Agencies/Departments	30%	N=70
Improve the scope and quality of retail offerings	29%	N=68
Bring more jobs to Elk Grove	57%	N=133
Increase non-resident visitation to the City	5%	N=11
Improve dining and entertainment options	44%	N=101
Improve Elk Grove's night life	23%	N=54
<b>Total</b>	<b>100%</b>	<b>N=232</b>

Total may exceed 100% as respondents could select more than one option.

The National Citizen Survey™

Table 60: Question 19

Are you a State of California employee?	Percent	Number
Yes	30%	N=80
No	70%	N=191
Total	100%	N=271

Table 61: Question 20

If yes, do you commute outside the boundaries of Elk Grove to your state job?	Percent	Number
Yes	87%	N=69
No	13%	N=10
Total	100%	N=79

Table 62: Question 21

If yes, how long does your typical work commute take?	Percent	Number
Less than 15 minutes	2%	N=1
15-30 minutes	25%	N=17
30-45 minutes	44%	N=30
45-60 minutes	26%	N=18
More than 60 minutes	3%	N=2
Total	100%	N=68

Table 63: Question 22

How do you typically commute to your State job outside the boundaries of Elk Grove?	Percent	Number
Drive myself, alone	69%	N=43
Carpool	22%	N=14
e-Tran bus	14%	N=9
Bicycle	1%	N=1
Light rail	6%	N=4
Rail	0%	N=0
e-Tran bus then transfer to Regional Transit/Light Rail/Amtrak, etc.	2%	N=1
Other	1%	N=1
Total	100%	N=62

Total may exceed 100% as respondents could select more than one option.

Table 64: Question 23

Would you prefer that more State agencies or departments were located in Elk Grove?	Percent	Number
Yes	97%	N=73
No	3%	N=2
Total	100%	N=75

The National Citizen Survey™

Table 65: Question 24

If a State agency or department other than one you work for were to locate in Elk Grove, how likely would you be to pursue a transfer to that agency?	Percent	Number
Very likely	52%	N=39
Somewhat likely	32%	N=24
Somewhat unlikely	6%	N=5
Very unlikely	6%	N=4
Don't know	4%	N=3
Total	100%	N=75

Table 66: Question D1

How often, if at all, do you do each of the following, considering all of the times you could?	Never		Rarely		Sometimes		Usually		Always		Total	
Recycle at home	1%	N=1	1%	N=3	6%	N=16	16%	N=42	77%	N=207	100%	N=270
Purchase goods or services from a business located in Elk Grove	1%	N=2	0%	N=0	8%	N=23	54%	N=145	37%	N=99	100%	N=270
Eat at least 5 portions of fruits and vegetables a day	2%	N=5	12%	N=33	32%	N=86	37%	N=99	18%	N=48	100%	N=271
Participate in moderate or vigorous physical activity	2%	N=6	8%	N=22	34%	N=93	37%	N=102	18%	N=49	100%	N=271
Read or watch local news (via television, paper, computer, etc.)	0%	N=1	9%	N=25	21%	N=56	24%	N=64	46%	N=124	100%	N=271
Vote in local elections	6%	N=16	9%	N=24	12%	N=33	21%	N=57	52%	N=138	100%	N=268

Table 67: Question D2

Would you say that in general your health is:	Percent	Number
Excellent	18%	N=48
Very good	43%	N=116
Good	32%	N=88
Fair	6%	N=17
Poor	1%	N=2
Total	100%	N=272

Table 68: Question D3

What impact, if any, do you think the economy will have on your family income in the next 6 months? Do you think the impact will be:	Percent	Number
Very positive	7%	N=19
Somewhat positive	22%	N=60
Neutral	60%	N=163
Somewhat negative	8%	N=23
Very negative	2%	N=5
Total	100%	N=270

The National Citizen Survey™

Table 69: Question D4

What is your employment status?	Percent	Number
Working full time for pay	68%	N=185
Working part time for pay	9%	N=25
Unemployed, looking for paid work	2%	N=6
Unemployed, not looking for paid work	1%	N=4
Fully retired	19%	N=51
Total	100%	N=272

Table 70: Question D5

Do you work inside the boundaries of Elk Grove?	Percent	Number
Yes, outside the home	24%	N=63
Yes, from home	5%	N=13
No	71%	N=185
Total	100%	N=261

Table 71: Question D6

How many years have you lived in Elk Grove?	Percent	Number
Less than 2 years	11%	N=29
2 to 5 years	16%	N=45
6 to 10 years	16%	N=43
11 to 20 years	35%	N=96
More than 20 years	22%	N=59
Total	100%	N=272

Table 72: Question D7

Which best describes the building you live in?	Percent	Number
One family house detached from any other houses	86%	N=233
Building with two or more homes (duplex, townhome, apartment or condominium)	14%	N=37
Mobile home	0%	N=0
Other	0%	N=0
Total	100%	N=271

Table 73: Question D8

Is this house, apartment or mobile home...	Percent	Number
Rented	25%	N=69
Owned	75%	N=203
Total	100%	N=273

The National Citizen Survey™

Table 74: Question D9

About how much is your monthly housing cost for the place you live (including rent, mortgage payment, property tax, property insurance and homeowners' association (HOA) fees)?	Percent	Number
Less than \$300 per month	2%	N=6
\$300 to \$599 per month	3%	N=9
\$600 to \$999 per month	7%	N=19
\$1,000 to \$1,499 per month	27%	N=72
\$1,500 to \$2,499 per month	41%	N=109
\$2,500 or more per month	19%	N=49
Total	100%	N=264

Table 75: Question D10

Do any children 17 or under live in your household?	Percent	Number
No	56%	N=151
Yes	44%	N=121
Total	100%	N=272

Table 76: Question D11

Are you or any other members of your household aged 65 or older?	Percent	Number
No	77%	N=210
Yes	23%	N=61
Total	100%	N=271

Table 77: Question D12

How much do you anticipate your household's total income before taxes will be for the current year? (Please include in your total income money from all sources for all persons living in your household.)	Percent	Number
Less than \$25,000	9%	N=23
\$25,000 to \$49,999	14%	N=37
\$50,000 to \$99,999	27%	N=71
\$100,000 to \$149,999	26%	N=68
\$150,000 or more	24%	N=62
Total	100%	N=261

Table 78: Question D13

Are you Spanish, Hispanic or Latino?	Percent	Number
No, not Spanish, Hispanic or Latino	81%	N=219
Yes, I consider myself to be Spanish, Hispanic or Latino	19%	N=52
Total	100%	N=270

The National Citizen Survey™

Table 79: Question D14

What is your race? (Mark one or more races to indicate what race(s) you consider yourself to be.)	Percent	Number
American Indian or Alaskan Native	1%	N=3
Asian, Asian Indian or Pacific Islander	29%	N=78
Black or African American	8%	N=21
White	55%	N=147
Other	14%	N=37

Total may exceed 100% as respondents could select more than one option.

Table 80: Question D15

In which category is your age?	Percent	Number
18 to 24 years	1%	N=3
25 to 34 years	28%	N=75
35 to 44 years	18%	N=49
45 to 54 years	26%	N=70
55 to 64 years	12%	N=32
65 to 74 years	9%	N=26
75 years or older	6%	N=17
Total	100%	N=272

Table 81: Question D16

What is your sex?	Percent	Number
Female	53%	N=144
Male	47%	N=128
Total	100%	N=272

Table 82: Question D17

Do you consider a cell phone or landline your primary telephone number?	Percent	Number
Cell	64%	N=173
Land line	15%	N=42
Both	21%	N=58
Total	100%	N=273



## Appendix B: Benchmark Comparisons

### Comparison Data

NRC’s database of comparative resident opinion is comprised of resident perspectives gathered in surveys from over 500 communities whose residents evaluated the same kinds of topics on The National Citizen Survey™. The comparison evaluations are from the most recent survey completed in each community; most communities conduct surveys every year or in alternating years. NRC adds the latest results quickly upon survey completion, keeping the benchmark data fresh and relevant. The communities in the database represent a wide geographic and population range. The City of Elk Grove chose to have comparisons made to the entire database and a subset of similar jurisdictions from the database (California communities with populations of 60,000 or more).

### Interpreting the Results

Ratings are compared when there are at least five communities in which a similar question was asked. Where comparisons are available, four columns are provided in the table. The first column is Elk Grove’s “percent positive.” The percent positive is the combination of the top two most positive response options (i.e., “excellent” and “good,” “very safe” and “somewhat safe,” “essential” and “very important,” etc.), or, in the case of resident behaviors/participation, the percent positive represents the proportion of respondents indicating “yes” or participating in an activity at least once a month. The second column is the rank assigned to Elk Grove’s rating among communities where a similar question was asked. The third column is the number of communities that asked a similar question. The final column shows the comparison of Elk Grove’s rating to the benchmark.

In that final column, Elk Grove’s results are noted as being “higher” than the benchmark, “lower” than the benchmark or “similar” to the benchmark, meaning that the average rating given by Elk Grove residents is statistically similar to or different (greater or lesser) than the benchmark. More extreme differences are noted as “much higher” or “much lower.”

Benchmark Database Characteristics	
Region	Percent
New England	3%
Middle Atlantic	5%
East North Central	15%
West North Central	13%
South Atlantic	22%
East South Central	3%
West South Central	7%
Mountain	16%
Pacific	16%
Population	Percent
Less than 10,000	10%
10,000 to 24,999	22%
25,000 to 49,999	23%
50,000 to 99,999	22%
100,000 or more	23%

## National Benchmark Comparisons

Table 83: Community Characteristics General

	Percent positive	Rank	Number of communities in comparison	Comparison to benchmark
The overall quality of life in Elk Grove	81%	265	397	Similar
Overall image or reputation of Elk Grove	70%	182	296	Similar
Elk Grove as a place to live	87%	213	340	Similar
Your neighborhood as a place to live	83%	115	262	Similar
Elk Grove as a place to raise children	86%	148	331	Similar
Elk Grove as a place to retire	65%	176	314	Similar
Overall appearance of Elk Grove	75%	158	309	Similar

Table 84: Community Characteristics by Facet

		Percent positive	Rank	Number of communities in comparison	Comparison to benchmark	
Safety	Overall feeling of safety in Elk Grove	72%	162	224	Similar	
	In your neighborhood during the day	90%	200	302	Similar	
	In Elk Grove's downtown/commercial area during the day	92%	158	256	Similar	
Mobility	Overall ease of getting to the places you usually have to visit	67%	106	140	Similar	
	Availability of paths and walking trails	66%	129	265	Similar	
	Ease of walking in Elk Grove	66%	95	246	Similar	
	Ease of travel by bicycle in Elk Grove	58%	92	250	Similar	
	Ease of travel by public transportation in Elk Grove	44%	56	123	Similar	
	Ease of travel by car in Elk Grove	59%	164	253	Similar	
	Ease of public parking	68%	33	116	Similar	
	Traffic flow on major streets	35%	249	298	Lower	
Natural Environment	Quality of overall natural environment in Elk Grove	74%	136	234	Similar	
	Cleanliness of Elk Grove	74%	129	227	Similar	
	Air quality	69%	155	209	Similar	
Built Environment	Overall "built environment" of Elk Grove (including overall design, buildings, parks and transportation systems)	63%	60	134	Similar	
	Overall quality of new development in Elk Grove	49%	175	242	Similar	
	Availability of affordable quality housing	48%	115	254	Similar	
	Variety of housing options	57%	123	233	Similar	
	Public places where people want to spend time	62%	76	127	Similar	
Economy	Overall economic health of Elk Grove	68%	69	139	Similar	
	Vibrant downtown/commercial area	31%	93	124	Lower	
	Overall quality of business and service establishments in Elk Grove	62%	132	227	Similar	
	Cost of living in Elk Grove	45%	62	133	Similar	
	Shopping opportunities	55%	121	252	Similar	
	Employment opportunities	33%	159	266	Similar	
	Elk Grove as a place to visit	41%	118	147	Lower	
	Elk Grove as a place to work	55%	193	305	Similar	
	Recreation and Wellness	Health and wellness opportunities in Elk Grove	68%	82	136	Similar
		Availability of affordable quality mental health care	50%	47	116	Similar
Availability of preventive health services		68%	64	190	Similar	
Availability of affordable quality health care		68%	66	214	Similar	
Availability of affordable quality food		65%	93	190	Similar	
	Recreational opportunities	58%	177	258	Similar	

The National Citizen Survey™

		Percent positive	Rank	Number of communities in comparison	Comparison to benchmark
	Fitness opportunities (including exercise classes and paths or trails, etc.)	74%	55	131	Similar
	Overall opportunities for education and enrichment	69%	76	134	Similar
Education and Enrichment	Opportunities to participate in religious or spiritual events and activities	74%	100	171	Similar
	Opportunities to attend cultural/arts/music activities	45%	174	251	Similar
	Adult educational opportunities	67%	46	121	Similar
	K-12 education	86%	69	223	Similar
	Availability of affordable quality child care/preschool	57%	87	212	Similar
	Opportunities to participate in social events and activities	49%	161	214	Similar
Community Engagement	Neighborhoodliness of Elk Grove	46%	104	129	Similar
	Openness and acceptance of the community toward people of diverse backgrounds	66%	89	244	Similar
	Opportunities to participate in community matters	50%	188	227	Similar
	Opportunities to volunteer	60%	171	221	Similar

Table 85: Governance General

	Percent positive	Rank	Number of communities in comparison	Comparison to benchmark
Services provided by the City of Elk Grove	75%	212	385	Similar
Overall customer service by Elk Grove employees (police, receptionists, planners, etc.)	66%	248	320	Similar
Value of services for the taxes paid to Elk Grove	52%	215	346	Similar
Overall direction that Elk Grove is taking	52%	175	277	Similar
Job Elk Grove government does at welcoming citizen involvement	38%	193	264	Similar
Overall confidence in Elk Grove government	44%	77	134	Similar
Generally acting in the best interest of the community	50%	76	134	Similar
Being honest	46%	73	130	Similar
Treating all residents fairly	49%	69	133	Similar
Services provided by the Federal Government	37%	95	205	Similar

Table 86: Governance by Facet

		Percent positive	Rank	Number of communities in comparison	Comparison to benchmark
Safety	Police/Sheriff services	74%	281	382	Similar
	Crime prevention	68%	197	306	Similar
	Animal control	71%	128	293	Similar
	Emergency preparedness (services that prepare the community for natural disasters or other emergency situations)	39%	221	240	Lower
Mobility	Traffic enforcement	63%	243	326	Similar
	Street repair	62%	89	371	Higher
	Street cleaning	61%	151	275	Similar
	Street lighting	69%	45	270	Similar
	Sidewalk maintenance	67%	51	275	Similar
	Traffic signal timing	48%	129	214	Similar
	Bus or transit services	53%	79	182	Similar
Natural Environment	Garbage collection	87%	131	306	Similar
	Recycling	87%	102	313	Similar
	Yard waste pick-up	86%	34	226	Higher
	Preservation of natural areas such as open space, farmlands and greenbelts	60%	115	218	Similar

The National Citizen Survey™

		Percent positive	Rank	Number of communities in comparison	Comparison to benchmark
Built Environment	Elk Grove open space	51%	80	127	Similar
	Storm drainage	80%	32	314	Higher
	Utility billing	56%	101	119	Similar
	Land use, planning and zoning	46%	158	254	Similar
	Code enforcement (weeds, abandoned buildings, etc.)	50%	162	314	Similar
Economy	Cable television	47%	125	163	Similar
Education and Enrichment	Economic development	45%	133	242	Similar
	City-sponsored special events	57%	106	143	Similar
Community Engagement	Public library services	79%	222	299	Similar
	Public information services	66%	126	246	Similar

Table 87: Participation General

	Percent positive	Rank	Number of communities in comparison	Comparison to benchmark
Sense of community	51%	185	261	Similar
Recommend living in Elk Grove to someone who asks	91%	100	235	Similar
Remain in Elk Grove for the next five years	87%	81	230	Similar
Contacted Elk Grove (in-person, phone, email or web) for help or information	39%	203	267	Similar

Table 88: Participation by Facet

		Percent positive	Rank	Number of communities in comparison	Comparison to benchmark
Safety	Stocked supplies in preparation for an emergency	45%	25	120	Similar
	Did NOT report a crime to the police	74%	93	130	Similar
	Household member was NOT a victim of a crime	86%	163	227	Similar
Mobility	Used bus, rail, subway or other public transportation instead of driving	20%	59	107	Similar
	Carpooled with other adults or children instead of driving alone	62%	5	126	Higher
	Walked or biked instead of driving	59%	55	130	Similar
Natural Environment	Made efforts to conserve water	96%	7	121	Higher
	Made efforts to make your home more energy efficient	79%	49	121	Similar
Built Environment	Recycle at home	98%	5	214	Higher
	Did NOT observe a code violation or other hazard in Elk Grove	41%	95	122	Lower
Economy	NOT experiencing housing costs stress	64%	148	210	Similar
	Purchase goods or services from a business located in Elk Grove	99%	7	126	Similar
	Economy will have positive impact on income	29%	67	212	Similar
Recreation and Wellness	Work inside boundaries of Elk Grove	29%	99	126	Lower
	Eat at least 5 portions of fruits and vegetables a day	86%	42	123	Similar
	Participate in moderate or vigorous physical activity	90%	19	124	Similar
Education and Enrichment	In very good to excellent health	60%	71	125	Similar
	Used Elk Grove public libraries or their services	57%	162	200	Similar
	Participated in religious or spiritual activities in Elk Grove	50%	82	168	Similar
	Attended City-sponsored event	55%	56	127	Similar

The National Citizen Survey™

		Percent positive	Rank	Number of communities in comparison	Comparison to benchmark
Community Engagement	Campaigned or advocated for an issue, cause or candidate	14%	109	118	Similar
	Contacted Elk Grove elected officials (in-person, phone, email or web) to express your opinion	9%	119	125	Similar
	Volunteered your time to some group/activity in Elk Grove	39%	113	219	Similar
	Participated in a club	26%	106	196	Similar
	Talked to or visited with your immediate neighbors	94%	29	126	Similar
	Done a favor for a neighbor	82%	57	122	Similar
	Attended a local public meeting	18%	155	219	Similar
	Watched (online or on television) a local public meeting	21%	131	184	Similar
	Read or watch local news (via television, paper, computer, etc.)	90%	19	125	Similar
	Vote in local elections	85%	52	212	Similar

Communities included in national comparisons

The communities included in Elk Grove’s comparisons are listed on the following pages along with their population according to the 2010 Census.

Adams County, CO .....	441,603	Bedford town, MA .....	13,320
Airway Heights city, WA .....	6,114	Bellevue city, WA .....	122,363
Albany city, OR .....	50,158	Bellingham city, WA .....	80,885
Albemarle County, VA .....	98,970	Beltrami County, MN .....	44,442
Albert Lea city, MN .....	18,016	Benbrook city, TX .....	21,234
Algonquin village, IL .....	30,046	Bend city, OR .....	76,639
Aliso Viejo city, CA .....	47,823	Benicia city, CA .....	26,997
Altoona city, IA .....	14,541	Bettendorf city, IA .....	33,217
American Canyon city, CA .....	19,454	Billings city, MT .....	104,170
Ames city, IA .....	58,965	Blaine city, MN .....	57,186
Andover CDP, MA .....	8,762	Bloomfield Hills city, MI .....	3,869
Ankeny city, IA .....	45,582	Bloomington city, MN .....	82,893
Ann Arbor city, MI .....	113,934	Blue Springs city, MO .....	52,575
Annapolis city, MD .....	38,394	Boise City city, ID .....	205,671
Apache Junction city, AZ .....	35,840	Boone County, KY .....	118,811
Apple Valley town, CA .....	69,135	Boulder city, CO .....	97,385
Arapahoe County, CO .....	572,003	Bowling Green city, KY .....	58,067
Arkansas City city, AR .....	366	Brentwood city, MO .....	8,055
Arlington city, TX .....	365,438	Brentwood city, TN .....	37,060
Arlington County, VA .....	207,627	Brighton city, CO .....	33,352
Arvada city, CO .....	106,433	Bristol city, TN .....	26,702
Asheville city, NC .....	83,393	Broken Arrow city, OK .....	98,850
Ashland city, OR .....	20,078	Brookfield city, WI .....	37,920
Ashland town, VA .....	7,225	Brookline CDP, MA .....	58,732
Aspen city, CO .....	6,658	Broomfield city, CO .....	55,889
Auburn city, AL .....	53,380	Brownsburg town, IN .....	21,285
Auburn city, WA .....	70,180	Bryan city, TX .....	76,201
Augusta CCD, GA .....	134,777	Burien city, WA .....	33,313
Aurora city, CO .....	325,078	Burleson city, TX .....	36,690
Austin city, TX .....	790,390	Cabarrus County, NC .....	178,011
Bainbridge Island city, WA .....	23,025	Cambridge city, MA .....	105,162
Baltimore city, MD .....	620,961	Canton city, SD .....	3,057
Bartonville town, TX .....	1,469	Cape Coral city, FL .....	154,305
Battle Creek city, MI .....	52,347	Cape Girardeau city, MO .....	37,941
Bay City city, MI .....	34,932	Carlisle borough, PA .....	18,682
Baytown city, TX .....	71,802	Carlsbad city, CA .....	105,328
Bedford city, TX .....	46,979	Carroll city, IA .....	10,103

## The National Citizen Survey™

Cartersville city, GA.....	19,731	Duluth city, MN.....	86,265
Cary town, NC.....	135,234	Duncanville city, TX.....	38,524
Casa Grande city, AZ.....	48,571	Durham city, NC.....	228,330
Casper city, WY.....	55,316	Eagle town, CO.....	6,508
Castine town, ME.....	1,366	East Baton Rouge Parish, LA.....	440,171
Castle Pines North city, CO.....	10,360	East Grand Forks city, MN.....	8,601
Castle Rock town, CO.....	48,231	East Lansing city, MI.....	48,579
Centennial city, CO.....	100,377	Eau Claire city, WI.....	65,883
Centralia city, IL.....	13,032	Eden Prairie city, MN.....	60,797
Chambersburg borough, PA.....	20,268	Edgerton city, KS.....	1,671
Chandler city, AZ.....	236,123	Edgewater city, CO.....	5,170
Chanhassen city, MN.....	22,952	Edina city, MN.....	47,941
Chapel Hill town, NC.....	57,233	Edmond city, OK.....	81,405
Charlotte city, NC.....	731,424	Edmonds city, WA.....	39,709
Charlotte County, FL.....	159,978	El Cerrito city, CA.....	23,549
Charlottesville city, VA.....	43,475	El Dorado County, CA.....	181,058
Chattanooga city, TN.....	167,674	El Paso city, TX.....	649,121
Chesterfield County, VA.....	316,236	Elk Grove city, CA.....	153,015
Chippewa Falls city, WI.....	13,661	Elk River city, MN.....	22,974
Citrus Heights city, CA.....	83,301	Elko New Market city, MN.....	4,110
Clackamas County, OR.....	375,992	Elmhurst city, IL.....	44,121
Clarendon Hills village, IL.....	8,427	Encinitas city, CA.....	59,518
Clayton city, MO.....	15,939	Englewood city, CO.....	30,255
Clearwater city, FL.....	107,685	Erie town, CO.....	18,135
Cleveland Heights city, OH.....	46,121	Escambia County, FL.....	297,619
Clive city, IA.....	15,447	Estes Park town, CO.....	5,858
Clovis city, CA.....	95,631	Fairview town, TX.....	7,248
College Park city, MD.....	30,413	Farmington Hills city, MI.....	79,740
College Station city, TX.....	93,857	Fayetteville city, NC.....	200,564
Colleyville city, TX.....	22,807	Fishers town, IN.....	76,794
Collinsville city, IL.....	25,579	Flower Mound town, TX.....	64,669
Columbia city, MO.....	108,500	Forest Grove city, OR.....	21,083
Columbia city, SC.....	129,272	Fort Collins city, CO.....	143,986
Columbia Falls city, MT.....	4,688	Fort Smith city, AR.....	86,209
Columbus city, WI.....	4,991	Fort Worth city, TX.....	741,206
Commerce City city, CO.....	45,913	Fountain Hills town, AZ.....	22,489
Concord city, CA.....	122,067	Franklin city, TN.....	62,487
Concord town, MA.....	17,668	Fredericksburg city, VA.....	24,286
Cookeville city, TN.....	30,435	Fremont city, CA.....	214,089
Coon Rapids city, MN.....	61,476	Friendswood city, TX.....	35,805
Copperas Cove city, TX.....	32,032	Fruita city, CO.....	12,646
Coronado city, CA.....	18,912	Gahanna city, OH.....	33,248
Corvallis city, OR.....	54,462	Gaithersburg city, MD.....	59,933
Creve Coeur city, MO.....	17,833	Galveston city, TX.....	47,743
Cross Roads town, TX.....	1,563	Gardner city, KS.....	19,123
Crystal Lake city, IL.....	40,743	Geneva city, NY.....	13,261
Dacono city, CO.....	4,152	Georgetown city, TX.....	47,400
Dade City city, FL.....	6,437	Gilbert town, AZ.....	208,453
Dakota County, MN.....	398,552	Gillette city, WY.....	29,087
Dallas city, OR.....	14,583	Glendora city, CA.....	50,073
Dallas city, TX.....	1,197,816	Glenview village, IL.....	44,692
Danville city, KY.....	16,218	Globe city, AZ.....	7,532
Dardenne Prairie city, MO.....	11,494	Golden Valley city, MN.....	20,371
Davenport city, IA.....	99,685	Goodyear city, AZ.....	65,275
Davidson town, NC.....	10,944	Grafton village, WI.....	11,459
Dayton city, OH.....	141,527	Grand Blanc city, MI.....	8,276
Decatur city, GA.....	19,335	Grand Island city, NE.....	48,520
Del Mar city, CA.....	4,161	Grass Valley city, CA.....	12,860
Delray Beach city, FL.....	60,522	Greeley city, CO.....	92,889
Denison city, TX.....	22,682	Green Valley CDP, AZ.....	21,391
Denton city, TX.....	113,383	Greenville city, NC.....	84,554
Denver city, CO.....	600,158	Greenwich town, CT.....	61,171
Derby city, KS.....	22,158	Greenwood Village city, CO.....	13,925
Des Peres city, MO.....	8,373	Greer city, SC.....	25,515
Destin city, FL.....	12,305	Guilford County, NC.....	488,406
Dorchester County, MD.....	32,618	Gunnison County, CO.....	15,324
Dothan city, AL.....	65,496	Gurnee village, IL.....	31,295
Douglas County, CO.....	285,465	Hailey city, ID.....	7,960
Dover city, NH.....	29,987	Haines Borough, AK.....	2,508
Dublin city, CA.....	46,036	Hallandale Beach city, FL.....	37,113

The National Citizen Survey™

Hamilton city, OH.....	62,477	Las Vegas city, NV.....	583,756
Hanover County, VA.....	99,863	Lawrence city, KS.....	87,643
Harrisonburg city, VA.....	48,914	League City city, TX.....	83,560
Harrisonville city, MO.....	10,019	Lee's Summit city, MO.....	91,364
Hayward city, CA.....	144,186	Lehi city, UT.....	47,407
Henderson city, NV.....	257,729	Lenexa city, KS.....	48,190
Herndon town, VA.....	23,292	Lewis County, NY.....	27,087
High Point city, NC.....	104,371	Lewisville city, TX.....	95,290
Highland Park city, IL.....	29,763	Libertyville village, IL.....	20,315
Highlands Ranch CDP, CO.....	96,713	Lincoln city, NE.....	258,379
Hillsborough town, NC.....	6,087	Lindsborg city, KS.....	3,458
Holland city, MI.....	33,051	Littleton city, CO.....	41,737
Honolulu County, HI.....	953,207	Livermore city, CA.....	80,968
Hooksett town, NH.....	13,451	Lombard village, IL.....	43,165
Hopkins city, MN.....	17,591	Lone Tree city, CO.....	10,218
Hopkinton town, MA.....	14,925	Long Grove village, IL.....	8,043
Hoquiam city, WA.....	8,726	Longmont city, CO.....	86,270
Horry County, SC.....	269,291	Longview city, TX.....	80,455
Hudson city, OH.....	22,262	Los Alamos County, NM.....	17,950
Hudson town, CO.....	2,356	Louisville city, CO.....	18,376
Hudsonville city, MI.....	7,116	Lynchburg city, VA.....	75,568
Huntersville town, NC.....	46,773	Lynnwood city, WA.....	35,836
Hurst city, TX.....	37,337	Macomb County, MI.....	840,978
Hutchinson city, MN.....	14,178	Madison city, WI.....	233,209
Hutto city, TX.....	14,698	Manhattan Beach city, CA.....	35,135
Hyattsville city, MD.....	17,557	Mankato city, MN.....	39,309
Independence city, MO.....	116,830	Maple Grove city, MN.....	61,567
Indian Trail town, NC.....	33,518	Maple Valley city, WA.....	22,684
Indianola city, IA.....	14,782	Maricopa County, AZ.....	3,817,117
Iowa City city, IA.....	67,862	Martinez city, CA.....	35,824
Issaquah city, WA.....	30,434	Maryland Heights city, MO.....	27,472
Jackson County, MI.....	160,248	Matthews town, NC.....	27,198
James City County, VA.....	67,009	McAllen city, TX.....	129,877
Jefferson City city, MO.....	43,079	McDonough city, GA.....	22,084
Jefferson County, CO.....	534,543	McKinney city, TX.....	131,117
Jefferson County, NY.....	116,229	McMinnville city, OR.....	32,187
Jerome city, ID.....	10,890	Medford city, OR.....	74,907
Johnson City city, TN.....	63,152	Menlo Park city, CA.....	32,026
Johnston city, IA.....	17,278	Mercer Island city, WA.....	22,699
Jupiter town, FL.....	55,156	Meridian charter township, MI.....	39,688
Kalamazoo city, MI.....	74,262	Meridian city, ID.....	75,092
Kansas City city, KS.....	145,786	Merriam city, KS.....	11,003
Kansas City city, MO.....	459,787	Mesa County, CO.....	146,723
Keizer city, OR.....	36,478	Miami Beach city, FL.....	87,779
Kenmore city, WA.....	20,460	Miami city, FL.....	399,457
Kennedale city, TX.....	6,763	Middleton city, WI.....	17,442
Kennett Square borough, PA.....	6,072	Midland city, MI.....	41,863
Kettering city, OH.....	56,163	Milford city, DE.....	9,559
Key West city, FL.....	24,649	Milton city, GA.....	32,661
King County, WA.....	1,931,249	Minneapolis city, MN.....	382,578
Kirkland city, WA.....	48,787	Mission Viejo city, CA.....	93,305
Kirkwood city, MO.....	27,540	Modesto city, CA.....	201,165
Knoxville city, IA.....	7,313	Monterey city, CA.....	27,810
La Mesa city, CA.....	57,065	Montgomery County, VA.....	94,392
La Plata town, MD.....	8,753	Monticello city, UT.....	1,972
La Porte city, TX.....	33,800	Monument town, CO.....	5,530
La Vista city, NE.....	15,758	Mooreville town, NC.....	32,711
Lafayette city, CO.....	24,453	Morristown city, TN.....	29,137
Laguna Beach city, CA.....	22,723	Morrisville town, NC.....	18,576
Laguna Hills city, CA.....	30,344	Moscow city, ID.....	23,800
Laguna Niguel city, CA.....	62,979	Mountain Village town, CO.....	1,320
Lake Oswego city, OR.....	36,619	Mountlake Terrace city, WA.....	19,909
Lake Stevens city, WA.....	28,069	Muscataine city, IA.....	22,886
Lake Worth city, FL.....	34,910	Naperville city, IL.....	141,853
Lake Zurich village, IL.....	19,631	Needham CDP, MA.....	28,886
Lakeville city, MN.....	55,954	New Braunfels city, TX.....	57,740
Lakewood city, CO.....	142,980	New Brighton city, MN.....	21,456
Lane County, OR.....	351,715	New Hanover County, NC.....	202,667
Larimer County, CO.....	299,630	New Orleans city, LA.....	343,829
Las Cruces city, NM.....	97,618	New Smyrna Beach city, FL.....	22,464

## The National Citizen Survey™

Newberg city, OR.....	22,068	Redmond city, WA.....	54,144
Newport Beach city, CA.....	85,186	Rehoboth Beach city, DE.....	1,327
Newport News city, VA.....	180,719	Reno city, NV.....	225,221
Newton city, IA.....	15,254	Reston CDP, VA.....	58,404
Noblesville city, IN.....	51,969	Richmond city, CA.....	103,701
Nogales city, AZ.....	20,837	Richmond Heights city, MO.....	8,603
Norfolk city, VA.....	242,803	Rifle city, CO.....	9,172
North Richland Hills city, TX.....	63,343	River Falls city, WI.....	15,000
Northglenn city, CO.....	35,789	Riverdale city, UT.....	8,426
Novato city, CA.....	51,904	Riverside city, CA.....	303,871
Novi city, MI.....	55,224	Riverside city, MO.....	2,937
O'Fallon city, IL.....	28,281	Rochester Hills city, MI.....	70,995
O'Fallon city, MO.....	79,329	Rock Hill city, SC.....	66,154
Oak Park village, IL.....	51,878	Rockford city, IL.....	152,871
Oakland city, CA.....	390,724	Rockville city, MD.....	61,209
Oakland Park city, FL.....	41,363	Rogers city, MN.....	8,597
Oakley city, CA.....	35,432	Rolla city, MO.....	19,559
Ogdensburg city, NY.....	11,128	Roselle village, IL.....	22,763
Oklahoma City city, OK.....	579,999	Rosemount city, MN.....	21,874
Olathe city, KS.....	125,872	Roseville city, MN.....	33,660
Old Town city, ME.....	7,840	Roswell city, GA.....	88,346
Olmsted County, MN.....	144,248	Round Rock city, TX.....	99,887
Olympia city, WA.....	46,478	Royal Oak city, MI.....	57,236
Orland Park village, IL.....	56,767	Saco city, ME.....	18,482
Oshkosh city, WI.....	66,083	Sahuarita town, AZ.....	25,259
Oshtemo charter township, MI.....	21,705	Sammamish city, WA.....	45,780
Otsego County, MI.....	24,164	San Anselmo town, CA.....	12,336
Overland Park city, KS.....	173,372	San Antonio city, TX.....	1,327,407
Oviedo city, FL.....	33,342	San Carlos city, CA.....	28,406
Paducah city, KY.....	25,024	San Diego city, CA.....	1,307,402
Palm Coast city, FL.....	75,180	San Francisco city, CA.....	805,235
Palo Alto city, CA.....	64,403	San Jose city, CA.....	945,942
Papillion city, NE.....	18,894	San Juan County, NM.....	130,044
Park City city, UT.....	7,558	San Marcos city, CA.....	83,781
Parker town, CO.....	45,297	San Marcos city, TX.....	44,894
Parkland city, FL.....	23,962	San Rafael city, CA.....	57,713
Pasadena city, CA.....	137,122	Sandy Springs city, GA.....	93,853
Pasco city, WA.....	59,781	Sanford city, FL.....	53,570
Pasco County, FL.....	464,697	Sangamon County, IL.....	197,465
Pearland city, TX.....	91,252	Santa Clarita city, CA.....	176,320
Peoria city, AZ.....	154,065	Santa Fe County, NM.....	144,170
Peoria city, IL.....	115,007	Santa Monica city, CA.....	89,736
Peoria County, IL.....	186,494	Sarasota County, FL.....	379,448
Petoskey city, MI.....	5,670	Savage city, MN.....	26,911
Pflugerville city, TX.....	46,936	Scarborough CDP, ME.....	4,403
Phoenix city, AZ.....	1,445,632	Schaumburg village, IL.....	74,227
Pinal County, AZ.....	375,770	Scott County, MN.....	129,928
Pinehurst village, NC.....	13,124	Scottsdale city, AZ.....	217,385
Piqua city, OH.....	20,522	Seaside city, CA.....	33,025
Pitkin County, CO.....	17,148	SeaTac city, WA.....	26,909
Plano city, TX.....	259,841	Sevierville city, TN.....	14,807
Platte City city, MO.....	4,691	Shawnee city, KS.....	62,209
Plymouth city, MN.....	70,576	Sheboygan city, WI.....	49,288
Pocatello city, ID.....	54,255	Shoreview city, MN.....	25,043
Polk County, IA.....	430,640	Shorewood city, MN.....	7,307
Pompano Beach city, FL.....	99,845	Shorewood village, IL.....	15,615
Port Huron city, MI.....	30,184	Shorewood village, WI.....	13,162
Port Orange city, FL.....	56,048	Sioux Center city, IA.....	7,048
Portland city, OR.....	583,776	Sioux Falls city, SD.....	153,888
Post Falls city, ID.....	27,574	Skokie village, IL.....	64,784
Prince William County, VA.....	402,002	Snellville city, GA.....	18,242
Prior Lake city, MN.....	22,796	Snowmass Village town, CO.....	2,826
Provo city, UT.....	112,488	South Kingstown town, RI.....	30,639
Pueblo city, CO.....	106,595	South Lake Tahoe city, CA.....	21,403
Purcellville town, VA.....	7,727	South Portland city, ME.....	25,002
Queen Creek town, AZ.....	26,361	Southborough town, MA.....	9,767
Radnor township, PA.....	31,531	Southlake city, TX.....	26,575
Ramsey city, MN.....	23,668	Sparks city, NV.....	90,264
Rapid City city, SD.....	67,956	Spokane Valley city, WA.....	89,755
Raymore city, MO.....	19,206	Spring Hill city, KS.....	5,437



The National Citizen Survey™

Springboro city, OH.....	17,409	Vestavia Hills city, AL.....	34,033
Springfield city, MO.....	159,498	Victoria city, MN.....	7,345
Springfield city, OR.....	59,403	Virginia Beach city, VA.....	437,994
Springville city, UT.....	29,466	Wake Forest town, NC.....	30,117
St. Charles city, IL.....	32,974	Walnut Creek city, CA.....	64,173
St. Cloud city, FL.....	35,183	Washington County, MN.....	238,136
St. Cloud city, MN.....	65,842	Washington town, NH.....	1,123
St. Joseph city, MO.....	76,780	Washoe County, NV.....	421,407
St. Louis County, MN.....	200,226	Watauga city, TX.....	23,497
St. Louis Park city, MN.....	45,250	Wauwatosa city, WI.....	46,396
Stallings town, NC.....	13,831	Waverly city, IA.....	9,874
State College borough, PA.....	42,034	Weddington town, NC.....	9,459
Steamboat Springs city, CO.....	12,088	Wentzville city, MO.....	29,070
Sterling Heights city, MI.....	129,699	West Carrollton city, OH.....	13,143
Sugar Grove village, IL.....	8,997	West Chester borough, PA.....	18,461
Sugar Land city, TX.....	78,817	West Des Moines city, IA.....	56,609
Summit city, NJ.....	21,457	West Richland city, WA.....	11,811
Summit County, UT.....	36,324	Western Springs village, IL.....	12,975
Sunnyvale city, CA.....	140,081	Westerville city, OH.....	36,120
Surprise city, AZ.....	117,517	Westlake town, TX.....	992
Suwanee city, GA.....	15,355	Westminster city, CO.....	106,114
Tacoma city, WA.....	198,397	Weston town, MA.....	11,261
Takoma Park city, MD.....	16,715	Wheat Ridge city, CO.....	30,166
Tamarac city, FL.....	60,427	White House city, TN.....	10,255
Temecula city, CA.....	100,097	Wichita city, KS.....	382,368
Tempe city, AZ.....	161,719	Williamsburg city, VA.....	14,068
Temple city, TX.....	66,102	Wilmington city, NC.....	106,476
The Woodlands CDP, TX.....	93,847	Wilsonville city, OR.....	19,509
Thornton city, CO.....	118,772	Winchester city, VA.....	26,203
Thousand Oaks city, CA.....	126,683	Windsor town, CO.....	18,644
Tigard city, OR.....	48,035	Windsor town, CT.....	29,044
Tracy city, CA.....	82,922	Winnetka village, IL.....	12,187
Tualatin city, OR.....	26,054	Winston-Salem city, NC.....	229,617
Tulsa city, OK.....	391,906	Winter Garden city, FL.....	34,568
Twin Falls city, ID.....	44,125	Woodbury city, MN.....	61,961
Tyler city, TX.....	96,900	Woodland city, CA.....	55,468
Umatilla city, OR.....	6,906	Woodland city, WA.....	5,509
Upper Arlington city, OH.....	33,771	Wrentham town, MA.....	10,955
Urbandale city, IA.....	39,463	Yakima city, WA.....	91,067
Vail town, CO.....	5,305	York County, VA.....	65,464
Vancouver city, WA.....	161,791	Yorktown town, IN.....	9,405

California Communities with Populations 60,000+ Benchmark Comparisons

Table 89: Community Characteristics General

	Percent positive	Rank	Number of communities in comparison	Comparison to benchmark
The overall quality of life in Elk Grove	81%	13	18	Similar
Overall image or reputation of Elk Grove	70%	6	9	Similar
Elk Grove as a place to live	87%	8	11	Similar
Your neighborhood as a place to live	83%	4	9	Similar
Elk Grove as a place to raise children	86%	6	11	Similar
Elk Grove as a place to retire	65%	5	10	Similar
Overall appearance of Elk Grove	75%	5	9	Similar

Table 90: Community Characteristics by Facet

		Percent positive	Rank	Number of communities in comparison	Comparison to benchmark
Safety	Overall feeling of safety in Elk Grove	72%	5	9	Similar
	In your neighborhood during the day	90%	9	12	Similar
	In Elk Grove's downtown/commercial area during the day	92%	7	11	Similar
Mobility	Overall ease of getting to the places you usually have to visit	67%	5	7	Similar
	Availability of paths and walking trails	66%	6	10	Similar

The National Citizen Survey™

		Percent positive	Rank	Number of communities in comparison	Comparison to benchmark	
	Ease of walking in Elk Grove	66%	5	9	Similar	
	Ease of travel by bicycle in Elk Grove	58%	5	9	Similar	
	Ease of travel by public transportation in Elk Grove	44%	4	8	Similar	
	Ease of travel by car in Elk Grove	59%	6	9	Similar	
	Ease of public parking	68%	1	6	Similar	
	Traffic flow on major streets	35%	13	15	Lower	
Natural Environment	Quality of overall natural environment in Elk Grove	74%	4	9	Similar	
	Cleanliness of Elk Grove	74%	6	9	Similar	
	Air quality	69%	5	9	Similar	
Built Environment	Overall "built environment" of Elk Grove (including overall design, buildings, parks and transportation systems)	63%	3	7	Similar	
	Overall quality of new development in Elk Grove	49%	5	9	Similar	
	Availability of affordable quality housing	48%	3	10	Higher	
	Variety of housing options	57%	4	9	Similar	
	Public places where people want to spend time	62%	3	7	Similar	
Economy	Overall economic health of Elk Grove	68%	4	7	Similar	
	Vibrant downtown/commercial area	31%	5	7	Lower	
	Overall quality of business and service establishments in Elk Grove	62%	5	9	Similar	
	Cost of living in Elk Grove	45%	2	8	Higher	
	Shopping opportunities	55%	6	9	Similar	
	Employment opportunities	33%	8	10	Similar	
	Elk Grove as a place to visit	41%	5	8	Similar	
	Elk Grove as a place to work	55%	8	10	Lower	
	Recreation and Wellness	Health and wellness opportunities in Elk Grove	68%	3	7	Similar
		Availability of affordable quality mental health care	50%	3	6	Similar
Availability of preventive health services		68%	3	9	Similar	
Availability of affordable quality health care		68%	3	9	Similar	
Availability of affordable quality food		65%	6	9	Similar	
Recreational opportunities		58%	4	9	Similar	
Education and Enrichment	Fitness opportunities (including exercise classes and paths or trails, etc.)	74%	3	7	Similar	
	Overall opportunities for education and enrichment	69%	4	7	Similar	
	Opportunities to participate in religious or spiritual events and activities	74%	4	7	Similar	
	Opportunities to attend cultural/arts/music activities	45%	8	10	Similar	
	Adult educational opportunities	67%	3	7	Similar	
	K-12 education	86%	3	9	Similar	
Community Engagement	Availability of affordable quality child care/preschool	57%	2	8	Similar	
	Opportunities to participate in social events and activities	49%	6	9	Similar	
	Neighborliness of Elk Grove	46%	5	7	Similar	
	Openness and acceptance of the community toward people of diverse backgrounds	66%	4	8	Similar	
	Opportunities to participate in community matters	50%	7	9	Similar	
	Opportunities to volunteer	60%	7	9	Similar	

Table 91: Governance General

	Percent positive	Rank	Number of communities in comparison	Comparison to benchmark
Services provided by the City of Elk Grove	75%	11	21	Similar
Overall customer service by Elk Grove employees (police, receptionists, planners, etc.)	66%	7	10	Similar

The National Citizen Survey™

	Percent positive	Rank	Number of communities in comparison	Comparison to benchmark
Value of services for the taxes paid to Elk Grove	52%	6	9	Similar
Overall direction that Elk Grove is taking	52%	6	10	Similar
Job Elk Grove government does at welcoming citizen involvement	38%	7	9	Similar
Overall confidence in Elk Grove government	44%	4	7	Similar
Generally acting in the best interest of the community	50%	4	7	Similar
Being honest	46%	4	7	Similar
Treating all residents fairly	49%	4	7	Similar
Services provided by the Federal Government	37%	6	9	Similar

Table 92: Governance by Facet

		Percent positive	Rank	Number of communities in comparison	Comparison to benchmark
Safety	Police/Sheriff services	74%	10	14	Similar
	Crime prevention	68%	8	11	Similar
	Animal control	71%	8	12	Similar
	Emergency preparedness (services that prepare the community for natural disasters or other emergency situations)	39%	9	11	Similar
Mobility	Traffic enforcement	63%	8	11	Similar
	Street repair	62%	5	14	Similar
	Street cleaning	61%	8	11	Similar
	Street lighting	69%	3	12	Similar
	Sidewalk maintenance	67%	1	10	Higher
	Traffic signal timing	48%	7	9	Similar
	Bus or transit services	53%	4	9	Similar
Natural Environment	Garbage collection	87%	5	12	Similar
	Recycling	87%	3	9	Similar
	Yard waste pick-up	86%	2	9	Similar
	Preservation of natural areas such as open space, farmlands and greenbelts	60%	7	12	Similar
Built Environment	Elk Grove open space	51%	3	6	Similar
	Storm drainage	80%	2	9	Similar
	Utility billing	56%	5	7	Similar
	Land use, planning and zoning	46%	5	9	Similar
	Code enforcement (weeds, abandoned buildings, etc.)	50%	8	11	Similar
	Cable television	47%	7	8	Similar
	Economy	Economic development	45%	8	10
Education and Enrichment	City-sponsored special events	57%	3	6	Similar
	Public library services	79%	9	14	Similar
Community Engagement	Public information services	66%	5	8	Similar

Table 93: Participation General

	Percent positive	Rank	Number of communities in comparison	Comparison to benchmark
Sense of community	51%	5	9	Similar
Recommend living in Elk Grove to someone who asks	91%	5	9	Similar
Remain in Elk Grove for the next five years	87%	4	9	Similar
Contacted Elk Grove (in-person, phone, email or web) for help or information	39%	7	10	Similar

The National Citizen Survey™

Table 94: Participation by Facet

		Percent positive	Rank	Number of communities in comparison	Comparison to benchmark
Safety	Stocked supplies in preparation for an emergency	45%	4	7	Similar
	Did NOT report a crime to the police	74%	4	7	Similar
	Household member was NOT a victim of a crime	86%	5	9	Similar
Mobility	Used bus, rail, subway or other public transportation instead of driving	20%	7	7	Much lower
	Carpooled with other adults or children instead of driving alone	62%	1	7	Higher
	Walked or biked instead of driving	59%	6	7	Similar
Natural Environment	Made efforts to conserve water	96%	5	7	Similar
	Made efforts to make your home more energy efficient	79%	4	7	Similar
	Recycle at home	98%	2	9	Similar
Built Environment	Did NOT observe a code violation or other hazard in Elk Grove	41%	6	7	Lower
	NOT experiencing housing costs stress	64%	4	9	Similar
Economy	Purchase goods or services from a business located in Elk Grove	99%	1	7	Similar
	Economy will have positive impact on income	29%	7	9	Similar
	Work inside boundaries of Elk Grove	29%	7	7	Lower
Recreation and Wellness	Eat at least 5 portions of fruits and vegetables a day	86%	6	7	Similar
	Participate in moderate or vigorous physical activity	90%	2	7	Similar
	In very good to excellent health	60%	5	7	Similar
Education and Enrichment	Used Elk Grove public libraries or their services	57%	6	9	Similar
	Participated in religious or spiritual activities in Elk Grove	50%	2	8	Similar
	Attended City-sponsored event	55%	2	7	Higher
Community Engagement	Campaigned or advocated for an issue, cause or candidate	14%	5	7	Similar
	Contacted Elk Grove elected officials (in-person, phone, email or web) to express your opinion	9%	6	7	Similar
	Volunteered your time to some group/activity in Elk Grove	39%	4	9	Similar
	Participated in a club	26%	5	9	Similar
	Talked to or visited with your immediate neighbors	94%	1	7	Similar
	Done a favor for a neighbor	82%	2	7	Similar
	Attended a local public meeting	18%	6	9	Similar
	Watched (online or on television) a local public meeting	21%	5	8	Similar
	Read or watch local news (via television, paper, computer, etc.)	90%	1	7	Similar
	Vote in local elections	85%	1	9	Similar

The National Citizen Survey™

Jurisdictions included in California Communities with Populations 60,000+ comparisons  
**The communities included in Elk Grove’s custom comparisons are listed below along with their population according to the 2010 Census.**

Apple Valley town, CA .....	69,135	Palo Alto city, CA .....	64,403
Carlsbad city, CA .....	105,328	Pasadena city, CA .....	137,122
Citrus Heights city, CA .....	83,301	Richmond city, CA .....	103,701
Clovis city, CA .....	95,631	Riverside city, CA .....	303,871
Concord city, CA .....	122,067	San Diego city, CA .....	1,307,402
El Dorado County, CA .....	181,058	San Francisco city, CA .....	805,235
Elk Grove city, CA .....	153,015	San Jose city, CA .....	945,942
Fremont city, CA .....	214,089	San Marcos city, CA .....	83,781
Hayward city, CA .....	144,186	Santa Clarita city, CA .....	176,320
Laguna Niguel city, CA .....	62,979	Santa Monica city, CA .....	89,736
Livermore city, CA .....	80,968	Sunnyvale city, CA .....	140,081
Mission Viejo city, CA .....	93,305	Temecula city, CA .....	100,097
Modesto city, CA .....	201,165	Thousand Oaks city, CA .....	126,683
Newport Beach city, CA .....	85,186	Tracy city, CA .....	82,922
Oakland city, CA .....	390,724	Walnut Creek city, CA .....	64,173

## Appendix C: Detailed Survey Methods

The National Citizen Survey (The NCS™), conducted by National Research Center, Inc., was developed to provide communities an accurate, affordable and easy way to assess and interpret resident opinion about important local topics. Standardization of common questions and survey methods provide the rigor to assure valid results, and each community has enough flexibility to construct a customized version of The NCS.

Results offer insight into residents' perspectives about the community as a whole, including local amenities, services, public trust, resident participation and other aspects of the community in order to support budgeting, land use and strategic planning and communication with residents. Resident demographic characteristics permit comparison to the Census as well as comparison of results for different subgroups of residents. The City of Elk Grove funded this research. Please contact Kara Reddig of the Elk Grove City Manager's office at [kreddig@elkgrovecity.org](mailto:kreddig@elkgrovecity.org) if you have any questions about the survey.

### Survey Validity

The question of survey validity has two parts: 1) how can a community be confident that the results from those who completed the questionnaire are representative of the results that would have been obtained had the survey been administered to the entire population? and 2) how closely do the perspectives recorded on the survey reflect what residents really believe or do?

To answer the first question, the best survey research practices were used for the resources spent to ensure that the results from the survey respondents reflect the opinions of residents in the entire community. These practices include:

- Using a mail-out/mail-back methodology, which typically gets a higher response rate than phone for the same dollars spent. A higher response rate lessens the worry that those who did not respond are different than those who did respond.
- Selecting households at random within the community to receive the survey to ensure that the households selected to receive the survey are representative of the larger community.
- Over-sampling multi-family housing units to improve response from hard-to-reach, lower income or younger apartment dwellers.
- Selecting the respondent within the household using an unbiased sampling procedure; in this case, the "birthday method." The cover letter included an instruction requesting that the respondent in the household be the adult (18 years old or older) who most recently had a birthday, irrespective of year of birth.
- Contacting potential respondents three times to encourage response from people who may have different opinions or habits than those who would respond with only a single prompt.
- Inviting response in a compelling manner (using appropriate letterhead/logos and a signature of a visible leader) to appeal to recipients' sense of civic responsibility.
- Providing a pre-addressed, postage-paid return envelope.
- Offering the survey in Spanish or other language when requested by a given community.
- Weighting the results to reflect the demographics of the population.

The answer to the second question about how closely the perspectives recorded on the survey reflect what residents really believe or do is more complex. Resident responses to surveys are influenced by a variety of factors. For questions about service quality, residents' expectations for service quality play a role as well as the "objective" quality of the service provided, the way the resident perceives the entire community (that is, the context in which the service is provided), the scale on which the resident is asked to record his or her opinion and, of course, the opinion, itself, that a resident holds about the service. Similarly a resident's report of certain behaviors is colored by what he or she believes is the socially desirable response (e.g., reporting tolerant behaviors toward "oppressed groups," likelihood of voting for a tax increase for services to poor people, use of alternative modes of travel to work besides the single occupancy vehicle), his or her memory of the actual behavior (if it is not a question speculating about future actions, like a vote), his or her confidence that he or she can be honest without suffering any negative consequences (thus the need for anonymity) as well as the actual behavior itself.

How closely survey results come to recording the way a person really feels or behaves often is measured by the coincidence of reported behavior with observed current behavior (e.g., driving habits), reported intentions to behave with observed future behavior (e.g., voting choices) or reported opinions about current community quality

with objective characteristics of the community (e.g., feelings of safety correlated with rates of crime). There is a body of scientific literature that has investigated the relationship between reported behaviors and actual behaviors. Well-conducted surveys, by and large, do capture true respondent behaviors or intentions to act with great accuracy. Predictions of voting outcomes tend to be quite accurate using survey research, as do reported behaviors that are not about highly sensitive issues (e.g., family abuse or other illegal or morally sanctioned activities). For self-reports about highly sensitive issues, statistical adjustments can be made to correct for the respondents' tendency to report what they think the "correct" response should be.

Research on the correlation of resident opinion about service quality and "objective" ratings of service quality vary, with some showing stronger relationships than others. NRC's own research has demonstrated that residents who report the lowest ratings of street repair live in communities with objectively worse street conditions than those who report high ratings of street repair (based on road quality, delay in street repair, number of road repair employees). Similarly, the lowest rated fire services appear to be "objectively" worse than the highest rated fire services (expenditures per capita, response time, "professional" status of firefighters, breadth of services and training provided). Resident opinion commonly reflects objective performance data but is an important measure on its own. NRC principals have written, "If you collect trash three times a day but residents think that your trash haul is lousy, you still have a problem."

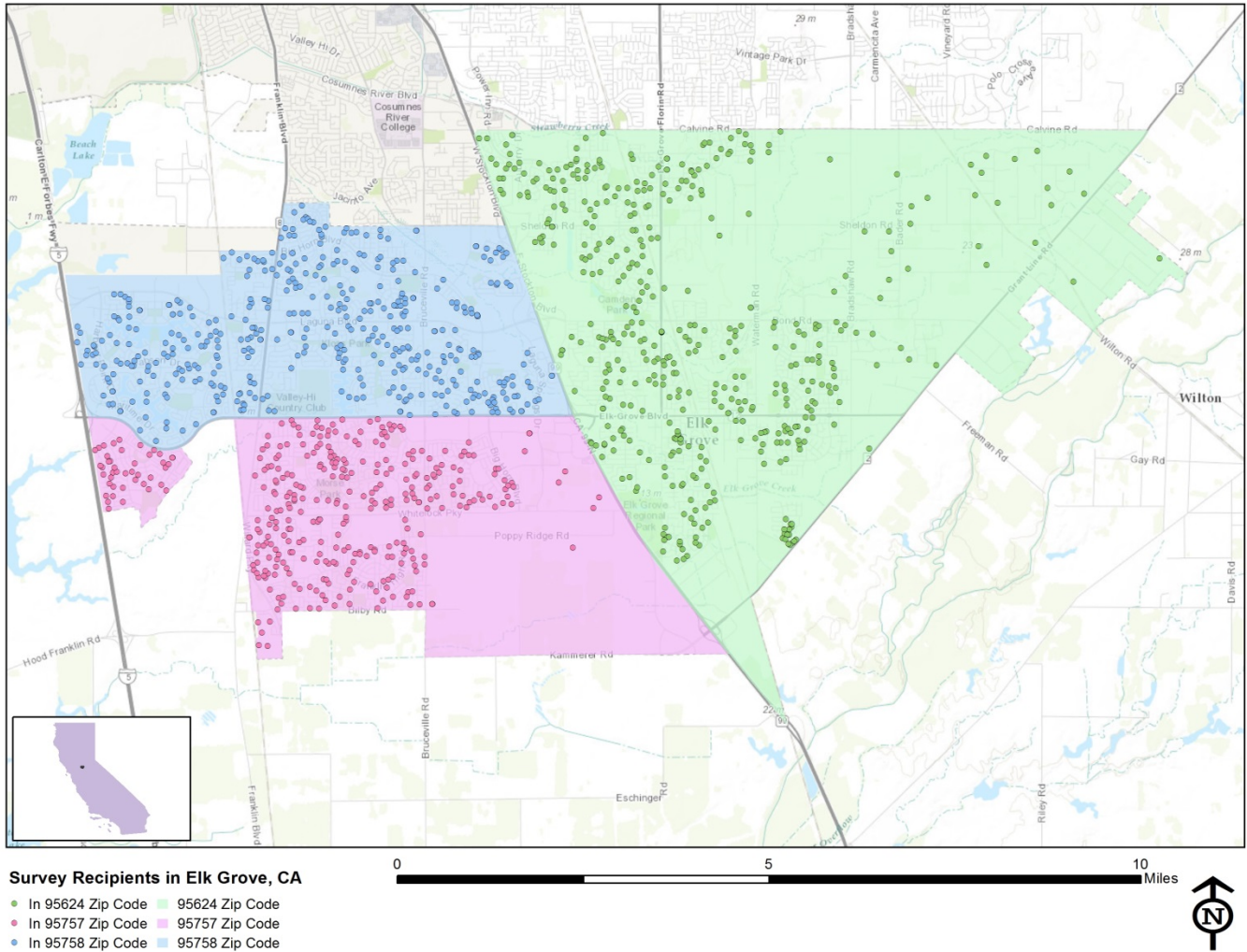
## Survey Sampling

"Sampling" refers to the method by which households were chosen to receive the survey. All households within the City of Elk Grove were eligible to participate in the survey. A list of all households within the zip codes serving Elk Grove was purchased based on updated listings from the United States Postal Service. Since some of the zip codes that serve the City of Elk Grove households may also serve addresses that lie outside of the community, the exact geographic location of each housing unit was compared to community boundaries using the most current municipal boundary file (updated on a quarterly basis) and addresses located outside of the City of Elk Grove boundaries were removed from consideration. Each address identified as being within City boundaries was further identified as being within one of the three City zip codes.

To choose the 1,400 survey recipients, a systematic sampling method was applied to the list of households previously screened for geographic location. Systematic sampling is a procedure whereby a complete list of all possible households is culled, selecting every *Nth* one, giving each eligible household a known probability of selection, until the appropriate number of households is selected. Multi-family housing units were over sampled as residents of this type of housing typically respond at lower rates to surveys than do those in single-family housing units. Figure 1 displays a map of the households selected to receive the survey. In general, because of the random sampling techniques used, the displayed sampling density will closely mirror the overall housing unit density (which may be different from the population density). While the theory of probability assumes no bias in selection, there may be some minor variations in practice (meaning, an area with only 15% of the housing units might be sampled at an actual rate that is slightly above or below that).

An individual within each household was selected using the birthday method. The birthday method selects a person within the household by asking the "person whose birthday has most recently passed" to complete the questionnaire. The underlying assumption in this method is that day of birth has no relationship to the way people respond to surveys. This instruction was contained in the cover letter accompanying the questionnaire.

Figure 1: Location of Survey Recipients



### Survey Administration and Response

Selected households received three mailings, one week apart, beginning on September 29, 2015. The first mailing was a prenotification postcard announcing the upcoming survey. The next mailing contained a letter from the Mayor inviting the household to participate, a questionnaire and a postage-paid return envelope. The final mailing contained a reminder letter, another survey and a postage-paid return envelope. The second cover letter asked those who had not completed the survey to do so and those who had already done so to refrain from turning in another survey. Respondents could also opt to take the survey online. Completed surveys were collected over the following six weeks.

About 2% of the 1,400 surveys mailed were returned because the housing unit was vacant or the postal service was unable to deliver the survey as addressed. Of the remaining 1,378 households that received the survey, 275 completed the survey, providing an overall response rate of 20%. Of the 275 completed surveys, 16 were completed online. Additionally, responses were tracked by zip code; response rates by zip code ranged from 18% to 22%.

Table 95: Survey Response Rates by Zip Code

	Number mailed	Undeliverable	Eligible	Returned	Response rate
95624	476	4	472	105	22%
95757	404	8	396	71	18%
95758	520	10	510	99	19%
Overall	1,400	22	1,378	275	20%



## Confidence Intervals

It is customary to describe the precision of estimates made from surveys by a “level of confidence” and accompanying “confidence interval” (or margin of error). A traditional level of confidence, and the one used here, is 95%. The 95% confidence interval can be any size and quantifies the sampling error or imprecision of the survey results because some residents’ opinions are relied on to estimate all residents’ opinions.<sup>1</sup>

The margin of error for the City of Elk Grove survey is no greater than plus or minus six percentage points around any given percent reported for the entire sample (275 completed surveys).

For subgroups of responses, the margin of error increases because the sample size for the subgroup is smaller. For subgroups of approximately 100 respondents, the margin of error is plus or minus 10 percentage points.

## Survey Processing (Data Entry)

Upon receipt, completed surveys were assigned a unique identification number. Additionally, each survey was reviewed and “cleaned” as necessary. For example, a question may have asked a respondent to pick two items out of a list of five, but the respondent checked three; in this case, NRC would use protocols to randomly choose two of the three selected items for inclusion in the dataset.

All surveys then were entered twice into an electronic dataset; any discrepancies were resolved in comparison to the original survey form. Range checks as well as other forms of quality control were also performed.

## Survey Data Weighting

The demographic characteristics of the survey sample were compared to those found in the 2010 Census and American Community Survey estimates for adults in the City of Elk Grove. The primary objective of weighting survey data is to make the survey sample reflective of the larger population of the community. The characteristics used for weighting were housing tenure (rent or own), race, sex, age and zip code. The results of the weighting scheme are presented in the following table.

---

<sup>1</sup> A 95% confidence interval indicates that for every 100 random samples of this many residents, 95 of the confidence intervals created will include the “true” population response. This theory is applied in practice to mean that the “true” perspective of the target population lies within the confidence interval created for a single survey. For example, if 75% of residents rate a service as “excellent” or “good,” then the 4% margin of error (for the 95% confidence interval) indicates that the range of likely responses for the entire community is between 71% and 79%. This source of uncertainty is called sampling error. In addition to sampling error, other sources of error may affect any survey, including the non-response of residents with opinions different from survey responders. Though standardized on The NCS, on other surveys, differences in question wording, order, translation and data entry, as examples, can lead to somewhat varying results.

The National Citizen Survey™

Table 96: Elk Grove, CA 2015 Weighting Table

Characteristic	Population Norm	Unweighted Data	Weighted Data
<b>Housing</b>			
Rent home	25%	17%	25%
Own home	75%	83%	75%
Detached unit	88%	90%	86%
Attached unit	12%	10%	14%
<b>Race and Ethnicity</b>			
White	49%	54%	49%
Not white	51%	46%	51%
Not Hispanic	84%	86%	81%
Hispanic	16%	14%	19%
<b>Sex and Age</b>			
Female	53%	60%	53%
Male	47%	40%	47%
18-34 years of age	30%	7%	29%
35-54 years of age	44%	40%	44%
55+ years of age	26%	53%	27%
Females 18-34	15%	4%	15%
Females 35-54	23%	25%	23%
Females 55+	14%	31%	14%
Males 18-34	15%	3%	13%
Males 35-54	21%	15%	21%
Males 55+	12%	22%	13%
<b>Zip Code</b>			
95624	35%	38%	37%
95757	26%	26%	25%
95758	39%	36%	38%

### Survey Data Analysis and Reporting

The survey dataset was analyzed using the Statistical Package for the Social Sciences (SPSS). For the most part, the percentages presented in the reports represent the “percent positive.” The percent positive is the combination of the top two most positive response options (i.e., “excellent” and “good,” “very safe” and “somewhat safe,” “essential” and “very important,” etc.), or, in the case of resident behaviors/participation, the percent positive represents the proportion of respondents indicating “yes” or participating in an activity at least once a month.

On many of the questions in the survey respondents may answer “don’t know.” The proportion of respondents giving this reply is shown in the full set of responses included in Appendix A. However, these responses have been removed from the analyses presented in the reports. In other words, the tables and graphs display the responses from respondents who had an opinion about a specific item.

## Appendix D: Survey Materials

Dear Elk Grove Resident,

It won't take much of your time to make a big difference!

Your household has been randomly selected to participate in a survey about your community. Your survey will arrive in a few days.

Thank you for helping create a better City!

Sincerely,



Gary Davis  
Mayor

Dear Elk Grove Resident,

It won't take much of your time to make a big difference!

Your household has been randomly selected to participate in a survey about your community. Your survey will arrive in a few days.

Thank you for helping create a better City!

Sincerely,



Gary Davis  
Mayor

Dear Elk Grove Resident,

It won't take much of your time to make a big difference!

Your household has been randomly selected to participate in a survey about your community. Your survey will arrive in a few days.

Thank you for helping create a better City!

Sincerely,



Gary Davis  
Mayor

Dear Elk Grove Resident,

It won't take much of your time to make a big difference!

Your household has been randomly selected to participate in a survey about your community. Your survey will arrive in a few days.

Thank you for helping create a better City!

Sincerely,



Gary Davis  
Mayor



City of Elk Grove  
8401 Laguna Palms Way  
Elk Grove, CA 95758

Presorted  
First Class Mail  
US Postage  
PAID  
Boulder, CO  
Permit NO. 94



City of Elk Grove  
8401 Laguna Palms Way  
Elk Grove, CA 95758

Presorted  
First Class Mail  
US Postage  
PAID  
Boulder, CO  
Permit NO. 94



City of Elk Grove  
8401 Laguna Palms Way  
Elk Grove, CA 95758

Presorted  
First Class Mail  
US Postage  
PAID  
Boulder, CO  
Permit NO. 94



City of Elk Grove  
8401 Laguna Palms Way  
Elk Grove, CA 95758

Presorted  
First Class Mail  
US Postage  
PAID  
Boulder, CO  
Permit NO. 94



City of Elk Grove  
8401 Laguna Palms Way  
Elk Grove, CA 95758

Presorted  
First Class Mail  
US Postage  
PAID  
Boulder, CO  
Permit NO.94

Phone: 916.683.7111  
Fax: 916.627.4200

Web: [www.elkgrovecity.org](http://www.elkgrovecity.org)

8401 Laguna Palms Way  
Elk Grove, California 95758



October 2015

Dear City of Elk Grove Resident:

Please help us shape the future of Elk Grove! You have been selected at random to participate in the 2015 Elk Grove Citizen Survey.

Please take a few minutes to fill out the enclosed survey. Your participation in this survey is very important – especially since your household is one of only a small number of households being surveyed. Your feedback will help Elk Grove make decisions that affect our City.

**A few things to remember:**

- **Your responses are completely anonymous.**
- In order to hear from a diverse group of residents, the adult 18 years or older in your household who most recently had a birthday should complete this survey.
- **You may return the survey by mail in the enclosed postage-paid envelope, or you can complete the survey online at:**

**[www.n-r-c.com/survey/elkgrove2015.htm](http://www.n-r-c.com/survey/elkgrove2015.htm)**

If you have any questions about the survey please call Kara Reddig at 916-478-2249.

Thank you for your time and participation!

Sincerely,

A handwritten signature in blue ink that reads "Gary Davis".

Gary Davis  
Mayor

Phone: 916.683.7111  
Fax: 916.627.4200

Web: [www.elkgrovecity.org](http://www.elkgrovecity.org)

8401 Laguna Palms Way  
Elk Grove, California 95758



October 2015

Dear City of Elk Grove Resident:

Here's a second chance if you haven't already responded to the 2015 Elk Grove Citizen Survey!  
**(If you completed it and sent it back, we thank you for your time and ask you to recycle this survey. Please do not respond twice.)**

Please help us shape the future of Elk Grove! You have been selected at random to participate in the 2015 Elk Grove Citizen Survey.

Please take a few minutes to fill out the enclosed survey. Your participation in this survey is very important – especially since your household is one of only a small number of households being surveyed. Your feedback will help Elk Grove make decisions that affect our City.

**A few things to remember:**

- **Your responses are completely anonymous.**
- In order to hear from a diverse group of residents, the adult 18 years or older in your household who most recently had a birthday should complete this survey.
- **You may return the survey by mail in the enclosed postage-paid envelope, or you can complete the survey online at:**

**[www.n-r-c.com/survey/elkgrove2015.htm](http://www.n-r-c.com/survey/elkgrove2015.htm)**

If you have any questions about the survey please call Kara Reddig at 916-478-2249.

Thank you for your time and participation!

Sincerely,

A handwritten signature in blue ink that reads "Gary Davis". The signature is written in a cursive style with a horizontal line under the name.

Gary Davis  
Mayor



# The City of Elk Grove 2015 Citizen Survey

Please complete this questionnaire if you are the adult (age 18 or older) in the household who most recently had a birthday. The adult's year of birth does not matter. Please select the response (by circling the number or checking the box) that most closely represents your opinion for each question. Your responses are anonymous and will be reported in group form only.

**1. Please rate each of the following aspects of quality of life in Elk Grove:**

	<i>Excellent</i>	<i>Good</i>	<i>Fair</i>	<i>Poor</i>	<i>Don't know</i>
Elk Grove as a place to live.....	1	2	3	4	5
Your neighborhood as a place to live.....	1	2	3	4	5
Elk Grove as a place to raise children.....	1	2	3	4	5
Elk Grove as a place to work.....	1	2	3	4	5
Elk Grove as a place to visit.....	1	2	3	4	5
Elk Grove as a place to retire.....	1	2	3	4	5
The overall quality of life in Elk Grove.....	1	2	3	4	5

**2. Please rate each of the following characteristics as they relate to Elk Grove as a whole:**

	<i>Excellent</i>	<i>Good</i>	<i>Fair</i>	<i>Poor</i>	<i>Don't know</i>
Overall feeling of safety in Elk Grove.....	1	2	3	4	5
Overall ease of getting to the places you usually have to visit.....	1	2	3	4	5
Quality of overall natural environment in Elk Grove.....	1	2	3	4	5
Overall "built environment" of Elk Grove (including overall design, buildings, parks and transportation systems).....	1	2	3	4	5
Health and wellness opportunities in Elk Grove.....	1	2	3	4	5
Overall opportunities for education and enrichment.....	1	2	3	4	5
Overall economic health of Elk Grove.....	1	2	3	4	5
Sense of community.....	1	2	3	4	5
Overall image or reputation of Elk Grove.....	1	2	3	4	5

**3. Please indicate how likely or unlikely you are to do each of the following:**

	<i>Very likely</i>	<i>Somewhat likely</i>	<i>Somewhat unlikely</i>	<i>Very unlikely</i>	<i>Don't know</i>
Recommend living in Elk Grove to someone who asks.....	1	2	3	4	5
Remain in Elk Grove for the next five years.....	1	2	3	4	5

**4. Please rate how safe or unsafe you feel:**

	<i>Very safe</i>	<i>Somewhat safe</i>	<i>Neither safe nor unsafe</i>	<i>Somewhat unsafe</i>	<i>Very unsafe</i>	<i>Don't know</i>
In your neighborhood during the day.....	1	2	3	4	5	6
In Elk Grove's downtown/commercial area during the day.....	1	2	3	4	5	6

**5. Please rate each of the following characteristics as they relate to Elk Grove as a whole:**

	<i>Excellent</i>	<i>Good</i>	<i>Fair</i>	<i>Poor</i>	<i>Don't know</i>
Traffic flow on major streets.....	1	2	3	4	5
Ease of public parking.....	1	2	3	4	5
Ease of travel by car in Elk Grove.....	1	2	3	4	5
Ease of travel by public transportation in Elk Grove.....	1	2	3	4	5
Ease of travel by bicycle in Elk Grove.....	1	2	3	4	5
Ease of walking in Elk Grove.....	1	2	3	4	5
Availability of paths and walking trails.....	1	2	3	4	5
Air quality.....	1	2	3	4	5
Cleanliness of Elk Grove.....	1	2	3	4	5
Overall appearance of Elk Grove.....	1	2	3	4	5
Public places where people want to spend time.....	1	2	3	4	5
Variety of housing options.....	1	2	3	4	5
Availability of affordable quality housing.....	1	2	3	4	5
Fitness opportunities (including exercise classes and paths or trails, etc.).....	1	2	3	4	5
Recreational opportunities.....	1	2	3	4	5
Availability of affordable quality food.....	1	2	3	4	5
Availability of affordable quality health care.....	1	2	3	4	5
Availability of preventive health services.....	1	2	3	4	5
Availability of affordable quality mental health care.....	1	2	3	4	5

**6. Please rate each of the following characteristics as they relate to Elk Grove as a whole:**

	<i>Excellent</i>	<i>Good</i>	<i>Fair</i>	<i>Poor</i>	<i>Don't know</i>
Availability of affordable quality child care/preschool .....	1	2	3	4	5
K-12 education .....	1	2	3	4	5
Adult educational opportunities.....	1	2	3	4	5
Opportunities to attend cultural/arts/music activities .....	1	2	3	4	5
Opportunities to participate in religious or spiritual events and activities .....	1	2	3	4	5
Employment opportunities .....	1	2	3	4	5
Shopping opportunities.....	1	2	3	4	5
Cost of living in Elk Grove.....	1	2	3	4	5
Overall quality of business and service establishments in Elk Grove.....	1	2	3	4	5
Vibrant downtown/commercial area .....	1	2	3	4	5
Overall quality of new development in Elk Grove.....	1	2	3	4	5
Opportunities to participate in social events and activities .....	1	2	3	4	5
Opportunities to volunteer.....	1	2	3	4	5
Opportunities to participate in community matters .....	1	2	3	4	5
Openness and acceptance of the community toward people of diverse backgrounds .....	1	2	3	4	5
Neighborliness of residents in Elk Grove .....	1	2	3	4	5

**7. Please indicate whether or not you have done each of the following in the last 12 months.**

	<i>No</i>	<i>Yes</i>
Made efforts to conserve water .....	1	2
Made efforts to make your home more energy efficient .....	1	2
Observed a code violation or other hazard in Elk Grove (weeds, abandoned buildings, etc.).....	1	2
Household member was a victim of a crime in Elk Grove .....	1	2
Reported a crime to the police in Elk Grove .....	1	2
Stocked supplies in preparation for an emergency .....	1	2
Campaigned or advocated for an issue, cause or candidate .....	1	2
Contacted the City of Elk Grove (in-person, phone, email or web) for help or information .....	1	2
Contacted Elk Grove elected officials (in-person, phone, email or web) to express your opinion .....	1	2

**8. In the last 12 months, about how many times, if at all, have you or other household members done each of the following in Elk Grove?**

	<i>2 times a week or more</i>	<i>2-4 times a month</i>	<i>Once a month or less</i>	<i>Not at all</i>
Used Elk Grove public libraries or their services .....	1	2	3	4
Participated in religious or spiritual activities in Elk Grove .....	1	2	3	4
Attended a City-sponsored event.....	1	2	3	4
Used bus, rail, subway or other public transportation instead of driving.....	1	2	3	4
Carpooled with other adults or children instead of driving alone.....	1	2	3	4
Walked or biked instead of driving .....	1	2	3	4
Volunteered your time to some group/activity in Elk Grove .....	1	2	3	4
Participated in a club .....	1	2	3	4
Talked to or visited with your immediate neighbors .....	1	2	3	4
Done a favor for a neighbor.....	1	2	3	4

**9. Thinking about local public meetings (of local elected officials like City Council or County Commissioners, advisory boards, town halls, HOA, neighborhood watch, etc.), in the last 12 months, about how many times, if at all, have you or other household members attended or watched a local public meeting?**

	<i>2 times a week or more</i>	<i>2-4 times a month</i>	<i>Once a month or less</i>	<i>Not at all</i>
<u>Attended</u> a local public meeting .....	1	2	3	4
<u>Watched</u> (online or on television) a local public meeting.....	1	2	3	4

# The City of Elk Grove 2015 Citizen Survey

## 10. Please rate the quality of each of the following services in Elk Grove:

	<i>Excellent</i>	<i>Good</i>	<i>Fair</i>	<i>Poor</i>	<i>Don't know</i>
Police/Sheriff services.....	1	2	3	4	5
Crime prevention.....	1	2	3	4	5
Traffic enforcement.....	1	2	3	4	5
Street repair.....	1	2	3	4	5
Street cleaning.....	1	2	3	4	5
Street lighting.....	1	2	3	4	5
Sidewalk maintenance.....	1	2	3	4	5
Traffic signal timing.....	1	2	3	4	5
Bus or transit services.....	1	2	3	4	5
Garbage collection.....	1	2	3	4	5
Recycling.....	1	2	3	4	5
Yard waste pick-up.....	1	2	3	4	5
Storm drainage.....	1	2	3	4	5
Utility billing.....	1	2	3	4	5
Land use, planning and zoning.....	1	2	3	4	5
Code enforcement (weeds, abandoned buildings, etc.).....	1	2	3	4	5
Animal control.....	1	2	3	4	5
Economic development.....	1	2	3	4	5
Public library services.....	1	2	3	4	5
Public information services.....	1	2	3	4	5
Cable television.....	1	2	3	4	5
Emergency preparedness (services that prepare the community for natural disasters or other emergency situations).....	1	2	3	4	5
Preservation of natural areas such as open space, farmlands and greenbelts.....	1	2	3	4	5
Elk Grove open space.....	1	2	3	4	5
City-sponsored special events.....	1	2	3	4	5
Overall customer service by Elk Grove employees (police, receptionists, planners, etc.).....	1	2	3	4	5

## 11. Overall, how would you rate the quality of the services provided by each of the following?

	<i>Excellent</i>	<i>Good</i>	<i>Fair</i>	<i>Poor</i>	<i>Don't know</i>
The City of Elk Grove.....	1	2	3	4	5
The Federal Government.....	1	2	3	4	5

## 12. Please rate the following categories of Elk Grove government performance:

	<i>Excellent</i>	<i>Good</i>	<i>Fair</i>	<i>Poor</i>	<i>Don't know</i>
The value of services for the taxes paid to Elk Grove.....	1	2	3	4	5
The overall direction that Elk Grove is taking.....	1	2	3	4	5
The job Elk Grove government does at welcoming citizen involvement.....	1	2	3	4	5
Overall confidence in Elk Grove government.....	1	2	3	4	5
Generally acting in the best interest of the community.....	1	2	3	4	5
Being honest.....	1	2	3	4	5
Treating all residents fairly.....	1	2	3	4	5

## 13. Please rate how important, if at all, you think it is for the Elk Grove community to focus on each of the following in the coming two years:

	<i>Essential</i>	<i>Very important</i>	<i>Somewhat important</i>	<i>Not at all important</i>
Overall feeling of safety in Elk Grove.....	1	2	3	4
Overall ease of getting to the places you usually have to visit.....	1	2	3	4
Quality of overall natural environment in Elk Grove.....	1	2	3	4
Overall "built environment" of Elk Grove (including overall design, buildings, parks and transportation systems).....	1	2	3	4
Health and wellness opportunities in Elk Grove.....	1	2	3	4
Overall opportunities for education and enrichment.....	1	2	3	4
Overall economic health of Elk Grove.....	1	2	3	4
Sense of community.....	1	2	3	4

**14. If someone you knew was considering a move to Elk Grove, what aspects of the City would you highlight to help them decide? (Check all that apply.)**

- Outdoor recreation opportunities
- Shopping options
- Rural area
- Sports facility access
- Proximity to Sacramento
- Central proximity between San Francisco and Tahoe
- Employment options
- Housing options
- Support for small businesses
- Community culture
- Quality of schools
- Civic amenities

**15. In what ways do you think Elk Grove can become a more influential presence in the Sacramento region? (Check all that apply.)**

- Support creation of regional employment centers
- Streamline the development process for projects
- Increase outreach and marketing of regional benefits
- Pursue trade opportunities in Asia
- Support regional light rail development
- Increase job opportunities within Elk Grove
- Increased coordination with international agencies and organizations
- Support and/or create development opportunities in partnership with UC Davis
- Improve business retention and expansion programs
- Additional/enhanced attractions within Elk Grove
- Increase city population
- Improved direct travel options abroad
- Collaborate on and promote a regional brand
- Incentivize growth in the technology and agriculture sectors

**16. In your own words, what one thing do you love most about Elk Grove?**

---



---

**17. What types of transit service improvements would you like to see? (Please check all that apply.)**

- More direct or express service
- More frequent bus service
- Earlier morning service
- Better lighting at bus stops
- Better information on how to use the bus, bus schedules and routes
- Direct shuttle service to the RT's light rail service (Cosumnes River College or Franklin)
- More park and ride locations
- Later night service
- Fewer transfers required

**18. In terms of Economic Development, please select the top 3 priorities the City should focus on over the next two years:**

- Retention and expansion efforts of existing businesses
- Recruitment efforts for new businesses not currently in Elk Grove
- Recruitment specifically of State Agencies/Departments
- Improve the scope and quality of retail offerings
- Bring more jobs to Elk Grove
- Increase non-resident visitation to the City
- Improve dining and entertainment options
- Improve Elk Grove's night life

**19. Are you a State of California employee?**

- Yes
- No → go to next page

**20. If yes, do you commute outside the boundaries of Elk Grove to your state job?**

- Yes
- No → skip to Question 23

**21. If yes, how long does your typical work commute take?**

- Less than 15 minutes
- 15-30 minutes
- 30-45 minutes
- 45-60 minutes
- More than 60 minutes

**22. How do you typically commute to your State job outside the boundaries of Elk Grove?**

- Drive myself, alone
- Carpool
- e-Tran bus
- Bicycle
- Light rail
- Rail
- e-Tran bus then transfer to Regional Transit/Light Rail/Amtrak, etc.
- Other

**23. Would you prefer that more State agencies or departments were located in Elk Grove?**

- Yes
- No

**24. If a State agency or department other than one you work for were to locate in Elk Grove, how likely would you be to pursue a transfer to that agency?**

- Very likely
- Somewhat likely
- Somewhat unlikely
- Very unlikely
- Don't know

# The City of Elk Grove 2015 Citizen Survey

**Our last questions are about you and your household. Again, all of your responses to this survey are completely anonymous and will be reported in group form only.**

**D1. How often, if at all, do you do each of the following, considering all of the times you could?**

	<i>Never</i>	<i>Rarely</i>	<i>Sometimes</i>	<i>Usually</i>	<i>Always</i>
Recycle at home .....	1	2	3	4	5
Purchase goods or services from a business located in Elk Grove .....	1	2	3	4	5
Eat at least 5 portions of fruits and vegetables a day .....	1	2	3	4	5
Participate in moderate or vigorous physical activity .....	1	2	3	4	5
Read or watch local news (via television, paper, computer, etc.) .....	1	2	3	4	5
Vote in local elections.....	1	2	3	4	5

**D2. Would you say that in general your health is:**

- Excellent     
  Very good     
  Good     
  Fair     
  Poor

**D3. What impact, if any, do you think the economy will have on your family income in the next 6 months? Do you think the impact will be:**

- Very positive     
  Somewhat positive     
  Neutral     
  Somewhat negative     
  Very negative

**D4. What is your employment status?**

- Working full time for pay  
 Working part time for pay  
 Unemployed, looking for paid work  
 Unemployed, not looking for paid work  
 Fully retired

**D5. Do you work inside the boundaries of Elk Grove?**

- Yes, outside the home  
 Yes, from home  
 No

**D6. How many years have you lived in Elk Grove?**

- Less than 2 years       11-20 years  
 2-5 years       More than 20 years  
 6-10 years

**D7. Which best describes the building you live in?**

- One family house detached from any other houses  
 Building with two or more homes (duplex, townhome, apartment or condominium)  
 Mobile home  
 Other

**D8. Is this house, apartment or mobile home...**

- Rented  
 Owned

**D9. About how much is your monthly housing cost for the place you live (including rent, mortgage payment, property tax, property insurance and homeowners' association (HOA) fees)?**

- Less than \$300 per month  
 \$300 to \$599 per month  
 \$600 to \$999 per month  
 \$1,000 to \$1,499 per month  
 \$1,500 to \$2,499 per month  
 \$2,500 or more per month

**D10. Do any children 17 or under live in your household?**

- No       Yes

**D11. Are you or any other members of your household aged 65 or older?**

- No       Yes

**D12. How much do you anticipate your household's total income before taxes will be for the current year? (Please include in your total income money from all sources for all persons living in your household.)**

- Less than \$25,000  
 \$25,000 to \$49,999  
 \$50,000 to \$99,999  
 \$100,000 to \$149,999  
 \$150,000 or more

**Please respond to both questions D13 and D14:**

**D13. Are you Spanish, Hispanic or Latino?**

- No, not Spanish, Hispanic or Latino  
 Yes, I consider myself to be Spanish, Hispanic or Latino

**D14. What is your race? (Mark one or more races to indicate what race you consider yourself to be.)**

- American Indian or Alaskan Native  
 Asian, Asian Indian or Pacific Islander  
 Black or African American  
 White  
 Other

**D15. In which category is your age?**

- 18-24 years       55-64 years  
 25-34 years       65-74 years  
 35-44 years       75 years or older  
 45-54 years

**D16. What is your sex?**

- Female       Male

**D17. Do you consider a cell phone or land line your primary telephone number?**

- Cell       Land line       Both

**Thank you for completing this survey. Please return the completed survey in the postage-paid envelope to: National Research Center, Inc., PO Box 549, Belle Mead, NJ 08502**