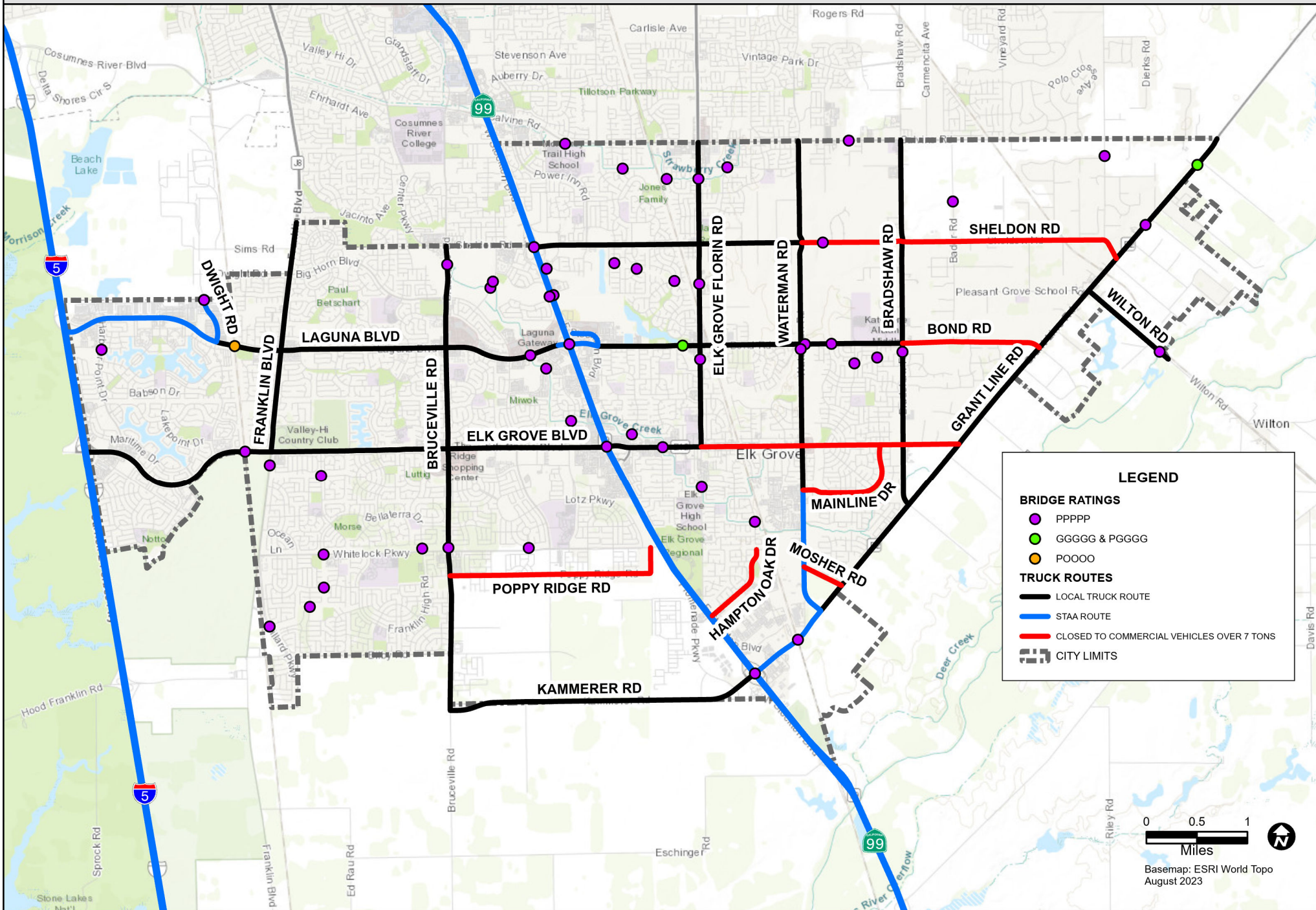


# Truck Routes & Bridge Ratings



# TRUCK MAP LEGEND

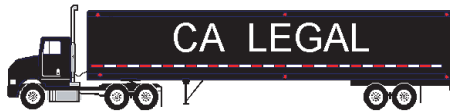
## TRUCK LENGTHS & ROUTES



STATE OF CALIFORNIA  
DEPARTMENT OF TRANSPORTATION

Click here for the [Truck Network Map](#)

..... CALIFORNIA LEGAL ROUTES California Legal trucks (black trucks) can travel on STAA routes (green and blue routes), CA Legal routes (black routes), and Advisory routes (yellow routes). CA Legal trucks have access to the entire State highway system except where prohibited (some red routes).



### California Legal Truck Tractor - Semitrailer

Semitrailer length : no limit  
 KPRA\* : 40 feet maximum for two or more axles,  
 38 feet maximum for single-axle trailers  
 Overall length : 65 feet maximum \*(KPRA = kingpin-to-rear-axle)



### California Legal Truck Tractor - Semitrailer - Trailer (Doubles)

Option A  
 Trailer length : 28 feet 6 inches maximum (each trailer)  
 Overall length : 75 feet maximum  
 Option B  
 Trailer length : one trailer 28 feet 6 inches maximum  
 other trailer may be longer than 28 feet 6 inches  
 Overall length : 65 feet maximum



CA LEGAL ADVISORY ROUTES - CA Legal trucks only; however, **travel not advised** if KPRA length is over posted value. KPRA advisories range from 30 to 38 feet.

— STAA ROUTES The STAA Network allows the “interstate” STAA trucks which are the green trucks shown below. The STAA Network consists of the National Network (green routes, primarily interstates) and Terminal Access routes (blue, primarily State routes). (“STAA” = federal Surface Transportation Assistance Act of 1982.)

(Click here for the [Truck Network Map](#).)



### Interstate “STAA” Truck Tractor - Semitrailer

Semitrailer length : 48 feet maximum  
 KPRA\* : no limit  
 Overall length : no limit \*(KPRA = kingpin-to-rear-axle)



Semitrailer length : over 48 feet up to 53 feet maximum  
 KPRA : 40 feet maximum for two or more axles,  
 38 feet maximum for single-axle trailers  
 Overall length : no limit



### Interstate “STAA” Truck Tractor - Semitrailer - Trailer (Doubles)

Trailer length : 28 feet 6 inches maximum (each trailer)  
 Overall length : no limit



Terminal Access - Interstate “STAA” trucks may travel on State highways that exhibit this sign.



Service Access - Interstate “STAA” trucks may travel up to one road mile from the off ramp to obtain services (food, fuel, lodging, repairs), provided the route displays this sign.

..... SPECIAL RESTRICTIONS - Route restricted for vehicle length or weight, cargo type, or number of axles. Click here for the list of [Special Route Restrictions](#).

## APPENDIX 20 WEIGHT CHART (PLATE 25-3)

**ORANGE AND BONUS OVERLOADS\***  
MAXIMUM PERMIT WEIGHT ON TANDEM AXLES = 42,800 POUNDS

Example: 8' - 0" Distance Between First and Last Axle in Feet

33,600	4 tires, 8' - 0" Wide	Orange Load = 700 (L + 40) [Min. = 32,000]
38,640	8 tires, 8' - 0" Wide	Orange Load (+ 15%) = 1.15 x 700 (L + 40) [Min. = 36,800]
42,000	8 tires, 10' - 0" Wide	Orange Load (+ 25%) = 1.25 x 700 (L + 40) [Min. = 40,000]

IN. FT.	0	1	2	3	4	5	6	7	8	9	10	11
2	20,000	20,000	20,000	20,000	20,000	20,000	20,000	20,000	20,000	20,000	20,000	20,000
3	20,000	20,000	20,000	20,000	20,000	20,000	32,000	32,000	32,000	32,000	32,000	32,000
4	32,000	32,000	32,000	32,000	32,000	32,000	32,000	32,000	32,000	32,000	32,000	32,000
5	32,000	32,000	32,000	32,000	32,000	32,000	32,000	32,000	32,000	32,025	32,083	32,142
6	32,200	32,258	32,317	32,375	32,433	32,492	32,550	32,608	32,667	32,725	32,783	32,842
7	32,900	32,958	33,017	33,075	33,133	33,192	33,250	33,308	33,367	33,425	33,483	33,542
8	33,600	33,658	33,717	33,775	33,833	33,892	33,950	34,008	34,067	34,125	34,183	34,242
9	34,300	34,358	34,417	34,475	34,533	34,592	34,650	34,708	34,767	34,825	34,883	34,942
10	35,000	35,058	35,117	35,175	35,233	35,292	35,350	35,408	35,467	35,525	35,583	35,642
11	35,700	35,758	35,817	35,875	35,933	35,992	36,050	36,108	36,167	36,225	36,283	36,342
12	36,400	36,458	36,517	36,575	36,633	36,692	36,750	36,808	36,867	36,925	36,983	37,042
13	37,100	37,158	37,217	37,275	37,333	37,392	37,450	37,508	37,567	37,625	37,683	37,742
14	37,800	37,858	37,917	37,975	38,033	38,092	38,150	38,208	38,267	38,325	38,383	38,442
15	38,500	38,558	38,617	38,675	38,733	38,792	38,850	38,908	38,967	39,025	39,083	39,142
16	39,200	39,258	39,317	39,375	39,433	39,492	39,550	39,608	39,667	39,725	39,783	39,842
17	39,900	39,958	40,017	40,075	40,133	40,192	40,250	40,308	40,367	40,425	40,483	40,542
18	40,600											

\* A set of tandem axles with spacing between axles of less than 3' - 6" is considered as a single axle.

## APPENDIX 20 WEIGHT CHART (PLATE 25-4)

### GREEN AND BONUS OVERLOADS\*

MAXIMUM PERMIT WEIGHT ON TANDEM AXLES = 52,000 POUNDS

Example: 8' - 0" Distance Between First and Last Axle in Feet

43,680
50,232
54,600

4 tires, 8' - 0" Wide  
8 tires, 8' - 0" Wide  
8 tires, 10' - 0" Wide

Green Load = 1.3 x 700 (L + 40)  
Green Load (+ 15%) = 1.15 x 1.3 x 700 (L + 40)  
Green Load (+ 25%) = 1.25 x 1.3 x 700 (L + 40)

IN. FT.	0	1	2	3	4	5	6	7	8	9	10	11
2	24,000	24,000	24,000	24,000	24,000	24,000	24,000	24,000	24,000	24,000	24,000	24,000
3	24,000	24,000	24,000	24,000	24,000	24,000	39,585	39,661	39,737	39,813	39,888	39,964
4	40,040	40,116	40,192	40,268	40,343	40,419	40,495	40,571	40,647	40,723	40,798	40,874
5	40,950	41,026	41,102	41,178	41,253	41,329	41,405	41,481	41,557	41,633	41,708	41,784
6	41,860	41,936	42,012	42,088	42,163	42,239	42,315	42,391	42,467	42,543	42,618	42,694
7	42,770	42,846	42,922	42,998	43,073	43,149	43,225	43,301	43,377	43,453	43,528	43,604
8	43,680	43,756	43,832	43,908	43,983	44,059	44,135	44,211	44,287	44,363	44,438	44,514
9	44,590	44,666	44,742	44,818	44,893	44,969	45,045	45,121	45,197	45,273	45,348	45,424
10	45,500	45,576	45,652	45,728	45,803	45,879	45,955	46,031	46,107	46,183	46,258	46,334
11	46,410	46,486	46,562	46,638	46,713	46,789	46,865	46,941	47,017	47,093	47,168	47,244
12	47,320	47,396	47,472	47,548	47,623	47,699	47,775	47,851	47,927	48,003	48,078	48,154
13	48,230	48,306	48,382	48,458	48,533	48,609	48,685	48,761	48,837	48,913	48,988	49,064
14	49,140	49,216	49,292	49,368	49,443	49,519	49,595	49,671	49,747	49,823	49,898	49,974
15	50,050	50,126	50,202	50,278	50,353	50,429	50,505	50,581	50,657	50,733	50,808	50,884
16	50,960	51,036	51,112	51,188	51,263	51,339	51,415	51,491	51,567	51,643	51,718	51,794
17	51,870	51,946	52,022	52,098	52,173	52,249	52,325	52,401	52,477	52,553	52,628	52,704
18	52,780	52,856	52,932	53,008	53,083	53,159	53,235	53,311	53,387	53,463	53,538	53,614

\* A set of tandem axles with spacing between axles of less than 3' - 6" is considered as a single axle.

## APPENDIX 20 WEIGHT CHART (PLATE 25-5)

**PURPLE AND BONUS OVERLOADS\***  
MAXIMUM PERMIT WEIGHT ON TANDEM AXLES = 60,000 POUNDS

Example: 8' - 0" Distance Between First and Last Axle in Feet

50,400	4 tires, 8' - 0" Wide	Purple Load = 1.5 x 700 (L + 40)
57,960	8 tires, 8' - 0" Wide	Purple Load (+ 15%) = 1.15 x 1.5 x 700 (L + 40)
63,000	8 tires, 10' - 0" Wide	Purple Load (+ 25%) = 1.25 x 1.5 x 700 (L + 40)

IN. FT.	0	1	2	3	4	5	6	7	8	9	10	11
2	28,000	28,000	28,000	28,000	28,000	28,000	28,000	28,000	28,000	28,000	28,000	28,000
3	32,000	32,000	32,000	32,000	32,000	32,000	32,000	32,000	32,000	32,000	32,000	32,000
4	35,000	35,000	35,000	35,000	35,000	35,000	35,000	35,000	35,000	35,000	35,000	35,000
5	46,200	46,288	46,375	46,463	46,550	46,638	46,725	46,813	46,900	46,988	47,075	47,163
6	53,130	53,231	53,331	53,432	53,533	53,633	53,734	53,834	53,935	54,036	54,136	54,237
7	57,750	57,859	57,969	58,078	58,188	58,297	58,406	58,516	58,625	58,734	58,844	58,953
8	47,250	47,338	47,425	47,513	47,600	47,688	47,775	47,863	47,950	48,038	48,125	48,213
9	54,338	54,438	54,539	54,639	54,740	54,841	54,941	55,042	55,143	55,243	55,344	55,444
10	59,063	59,172	59,281	59,391	59,500	59,609	59,719	59,828	59,938	60,047	60,156	60,266
11	48,300	48,388	48,475	48,563	48,650	48,738	48,825	48,913	49,000	49,088	49,175	49,263
12	55,545	55,646	55,746	55,847	55,948	56,048	56,149	56,249	56,350	56,451	56,551	56,652
13	60,375	60,484	60,594	60,703	60,813	60,922	61,031	61,141	61,250	61,359	61,469	61,578
14	49,350	49,438	49,525	49,613	49,700	49,788	49,875	49,963	50,050	50,138	50,225	50,313
15	56,753	56,853	56,954	57,054	57,155	57,256	57,356	57,457	57,558	57,658	57,759	57,859
16	61,688	61,797	61,906	62,016	62,125	62,234	62,344	62,453	62,563	62,672	62,781	62,891
17	50,400	50,488	50,575	50,663	50,750	50,838	50,925	51,013	51,100	51,188	51,275	51,363
18	57,960	58,061	58,161	58,262	58,363	58,463	58,564	58,664	58,765	58,866	58,966	59,067
19	63,000	63,109	63,219	63,328	63,438	63,547	63,656	63,766	63,875	63,984	64,094	64,203
20	51,450	51,538	51,625	51,713	51,800	51,888	51,975	52,063	52,150	52,238	52,325	52,413
21	59,168	59,268	59,369	59,469	59,570	59,671	59,771	59,872	59,973	60,073	60,174	60,274
22	64,313	64,422	64,531	64,641	64,750	64,859	64,969	65,078	65,188	65,297	65,406	65,516
23	52,500	52,588	52,675	52,763	52,850	52,938	53,025	53,113	53,200	53,288	53,375	53,463
24	60,375	60,476	60,576	60,677	60,778	60,878	60,979	61,079	61,180	61,281	61,381	61,482
25	65,625	65,734	65,844	65,953	66,063	66,172	66,281	66,391	66,500	66,609	66,719	66,828
26	53,550	53,638	53,725	53,813	53,900	53,988	54,075	54,163	54,250	54,338	54,425	54,513
27	61,583	61,683	61,784	61,884	61,985	62,086	62,186	62,287	62,388	62,488	62,589	62,689
28	66,938	67,047	67,156	67,266	67,375	67,484	67,594	67,703	67,813	67,922	68,031	68,141
29	54,600	54,688	54,775	54,863	54,950	55,038	55,125	55,213	55,300	55,388	55,475	55,563
30	62,790	62,891	62,991	63,092	63,193	63,293	63,394	63,494	63,595	63,696	63,796	63,897
31	68,250	68,359	68,469	68,578	68,688	68,797	68,906	69,016	69,125	69,234	69,344	69,453
32	55,650	55,738	55,825	55,913	56,000	56,088	56,175	56,263	56,350	56,438	56,525	56,613
33	63,998	64,098	64,199	64,299	64,400	64,501	64,601	64,702	64,803	64,903	65,004	65,104
34	69,563	69,672	69,781	69,891	70,000	70,109	70,219	70,328	70,438	70,547	70,656	70,766
35	56,700	56,788	56,875	56,963	57,050	57,138	57,225	57,313	57,400	57,488	57,575	57,663
36	65,205	65,306	65,406	65,507	65,608	65,708	65,809	65,909	66,010	66,111	66,211	66,312
37	70,875	70,984	71,094	71,203	71,313	71,422	71,531	71,641	71,750	71,859	71,969	72,078
38	57,750	57,838	57,925	58,013	58,100	58,188	58,275	58,363	58,450	58,538	58,625	58,713
39	66,413	66,513	66,614	66,714	66,815	66,916	67,016	67,117	67,218	67,318	67,419	67,519
40	72,188	72,297	72,406	72,516	72,625	72,734	72,844	72,953	73,063	73,172	73,281	73,391
41	58,800	58,888	58,975	59,063	59,150	59,238	59,325	59,413	59,500	59,588	59,675	59,763
42	67,620	67,721	67,821	67,922	68,023	68,123	68,224	68,324	68,425	68,526	68,626	68,727
43	73,500	73,609	73,719	73,828	73,938	74,047	74,156	74,266	74,375	74,484	74,594	74,703
44	59,850	59,938	60,025	60,113	60,200	60,288	60,375	60,463	60,550	60,638	60,725	60,813
45	68,828	68,928	69,029	69,129	69,230	69,331	69,431	69,532	69,633	69,733	69,834	69,934
46	74,813	74,922	75,031	75,141	75,250	75,359	75,469	75,578	75,688	75,797	75,906	76,016
47	60,900											
48	70,035											
49	76,125											

\* A set of tandem axles with spacing between axles of less than 3' - 6" is considered as a single axle.