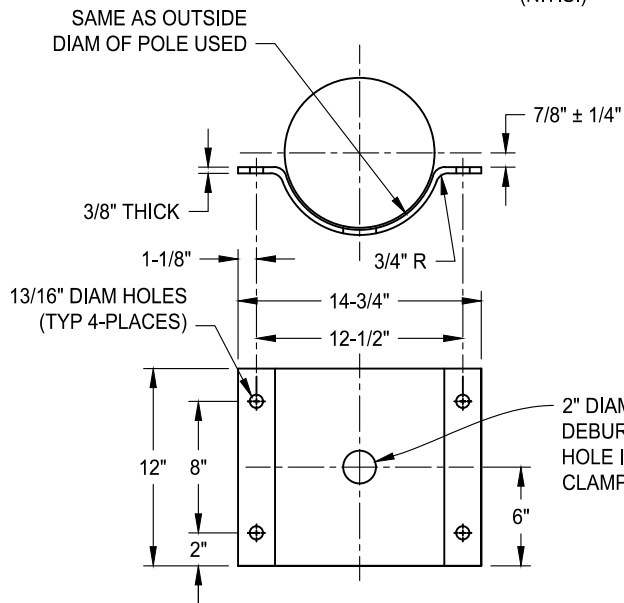
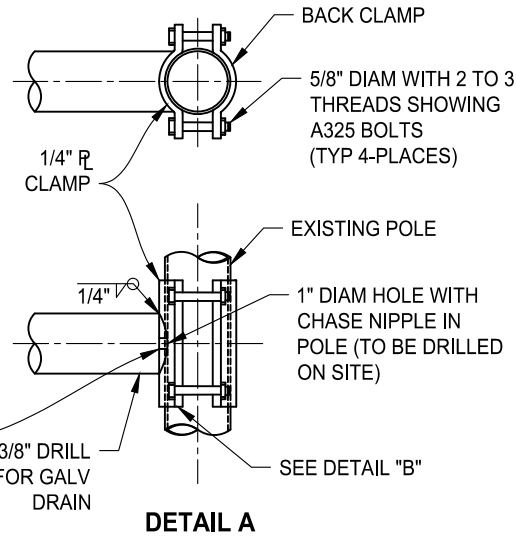


MOUNTING HEIGHT:
25' TO BASE PLATE OR
AS DIRECTED BY THE
ENGINEER IN THE FIELD

IISNS SUPPORT ARM
(N.T.S.)



DETAIL B



DETAIL A

CLAMP DETAILS
(N.T.S.)

GENERAL NOTES

MATERIAL SPECIFICATIONS	
SHAFT	STEEL OF 48,000 PSI MINIMUM YIELD AFTER FABRICATION
CLAMP PLATE	ASTM A-572 GR. 50 STEEL
MANUFACTURING PROCESS	
LONGITUDINAL WELDS	ALL WELDS SHALL CONFORM TO AWS D1.1 WELD SPECIFICATION
FINISH COATING	
STRUCTURE	HOT DIP GALVANIZED PER ASTM A-123
HARDWARE	HOT DIP GALVANIZED PER ASTM A-153
DESIGN CRITERIA	
STRUCTURE, HARDWARE, AND WELDING	IN ACCORDANCE WITH THE "SPECIFICATIONS FOR STRUCTURAL SUPPORTS OF HIGHWAY SIGNS, LUMINAIRES AND TRAFFIC SIGNALS", AASHTO 1994

DATE: 09/22/2007		NOT TO SCALE	
REVISION	BY	APPROVED	DATE

CITY OF ELK GROVE - PUBLIC WORKS

IISNS SUPPORT ARM
TYPICAL CLAMP DETAIL

APPROVED BY:

Robert M. ...

CITY ENGINEER

10/24/2018

DATE

DRAWING NUMBER



T - 14