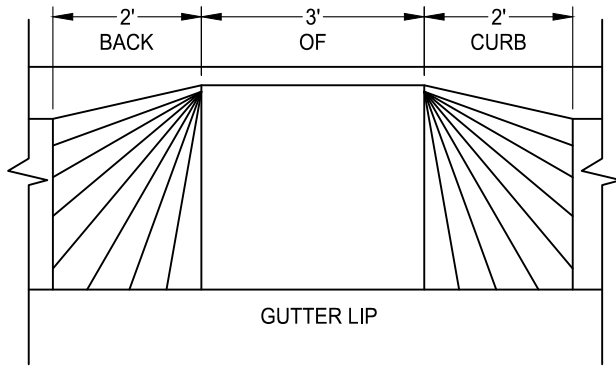
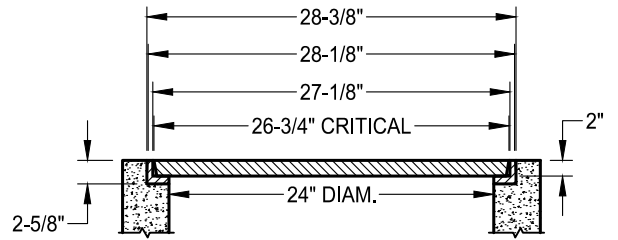
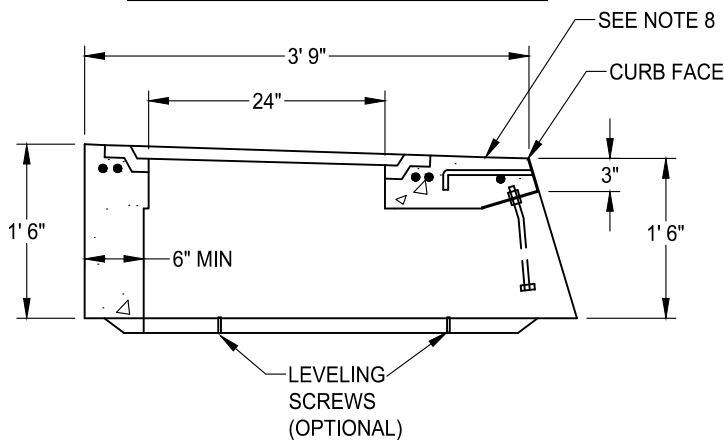
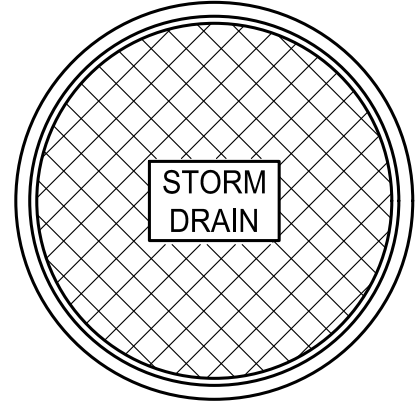


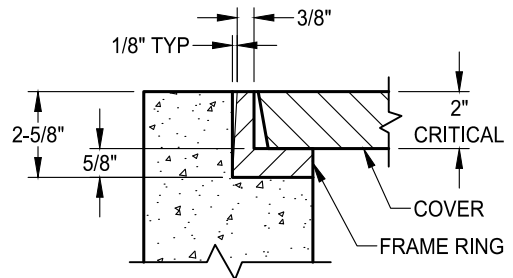
GUTTER TRANSITION ELEVATION



GUTTER TRANSITION PLAN



CURB INLET DETAIL



FRAME AND LID DETAIL

| | |
|----------------------|--------|
| WEIGHT | |
| CAST IRON COVER | 91 LBS |
| CAST IRON FRAME RING | 52 LBS |

NOTES:

1. CURB INLET ASSEMBLY MAY BE PRECAST CONCRETE, OR FORMED AND CAST-IN-PLACE P.C.C.
2. ALL METAL SHALL BE HOT DIPPED GALVANIZED ASTM A123.
3. ALL CASTINGS TO CONFORM TO ASTM A48, CLASS 35B
4. FRAME AND COVER TO MEET H-20 LOAD SPECIFICATIONS.
5. BEARING SURFACES ARE MACHINE BEVELED TO ASSURE A CLOSE, NON ROCKING SURFACE.
6. FRAME AND COVER SHALL HAVE A COATING OF BLACK BITUMINOUS MATERIAL CONFORMING TO ASTM 48-30.
7. SEE ARTICLE 50-31 "SEWER AND STORM DRAIN CASTINGS" OF SECTION 50, CONSTRUCTION SPECIFICATIONS.
8. INSTALL "NO DUMPING, DRAINS TO CREEK" PLACARD ON TOP OF CURB.

| | | | |
|---------------------|----|--------------|------|
| DATE: 09/22/2017 | | NOT TO SCALE | |
| REVISION | BY | APPROVED | DATE |
| | | | |
| | | | |
| | | | |

CITY OF ELK GROVE - PUBLIC WORKS

**DROP INLET TYPE G
TYPE 2 C&G ONLY
(SHEET 2 OF 2)**

APPROVED BY:
Paul Muroch
CITY ENGINEER

10/24/2018
DATE

DRAWING NUMBER
SD - 19.2

