



8400 LAGUNA PALMS WAY • ELK GROVE, CALIFORNIA 95758
TEL: 916.683.7111 • FAX: 916.691.2001 • www.elkgrovecity.org

PUBLIC WORKS DEPARTMENT

Re-Transmittal of Previously Approved Improvement Standards and Details

Date of re-transmittal: May 13, 2005

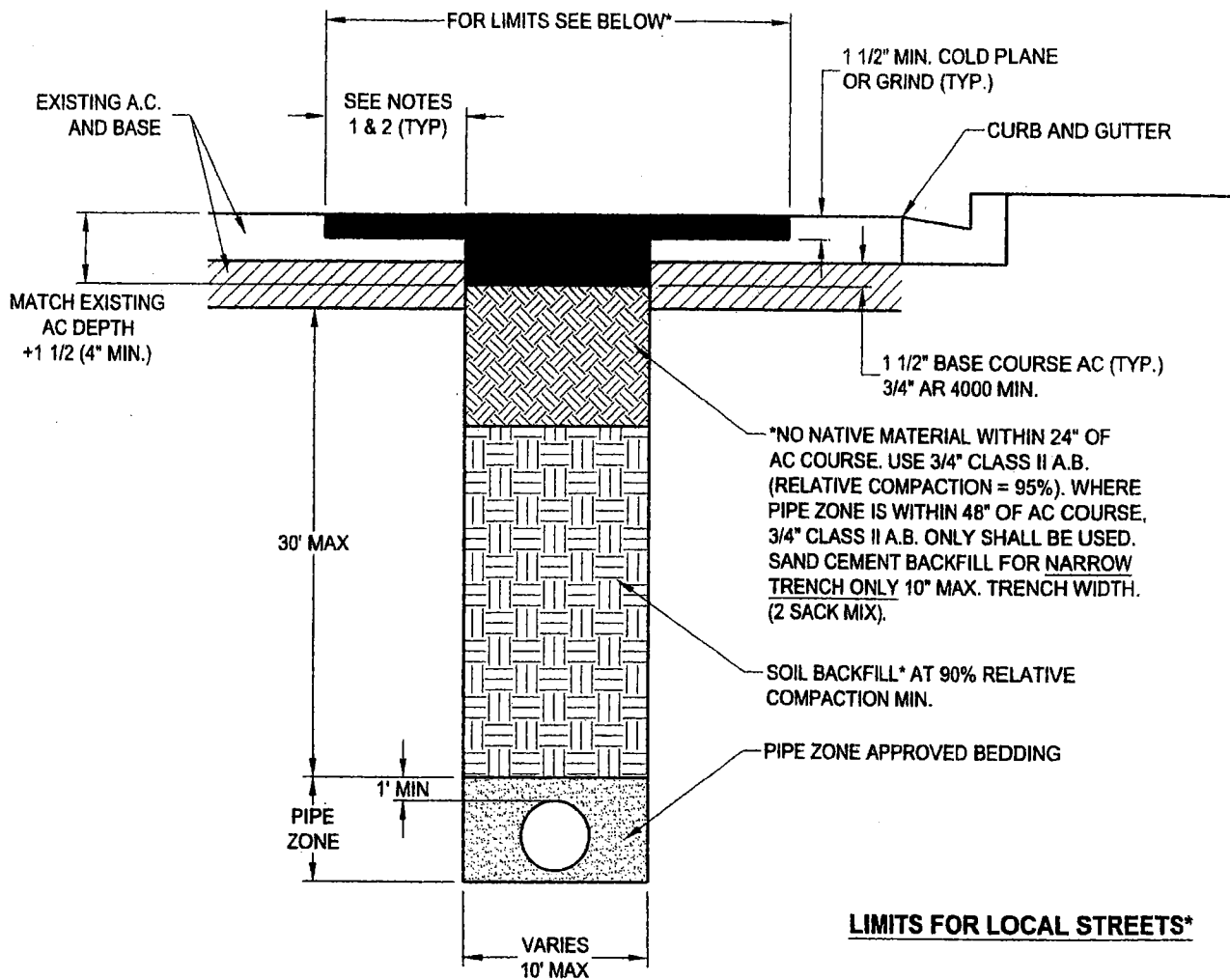
Transmitted Details:

Trench Backfill and Resurfacing standard details **ST-1 through ST-7 and ST9 and ST10**

The addition of new ST-8 supersedes these details for trench compaction **only**. These details will be revised to reflect this change in a subsequent modification.

Distributed for clarification only:

Don Crawford 5/13/05
Development Support Services Manager Date



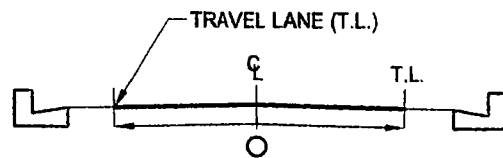
NOTES:

1. 10' MINIMUM REMOVAL REQUIRED WHEN TRENCH IS PERPENDICULAR OR ANGULAR TO FLOW OF TRAFFIC.
2. 2' MINIMUM
3. SEE ST-7 FOR GENERAL NOTES.

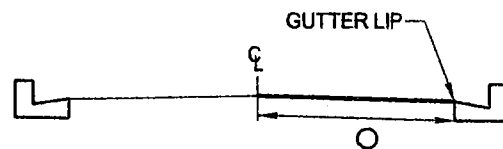
*FOR STREETS OTHER THAN LOCAL DESIGNATION GRINDING SHALL BE FROM TRAVEL LANE TO TRAVEL LANE.

*ANY TRENCH WITHIN 6' OF GUTTER LIP SHALL GRIND FROM GUTTER LIP TO EDGE OF TRAVEL LANE, BIKE LANE OR PARKING LANE, WHICHEVER IS LESSER AND STILL MEETS MINIMUMS ABOVE.

LIMITS FOR LOCAL STREETS*



COMPLETE REMOVAL WHEN PIPE IS IN CENTER OF STREET



COMPLETE REMOVAL WHEN PIPE IS OFFSET

DATE: 01/14/2005		NOT TO SCALE	
REVISION	BY	APPROVED	DATE

CITY OF ELK GROVE - DEPARTMENT OF PUBLIC WORKS

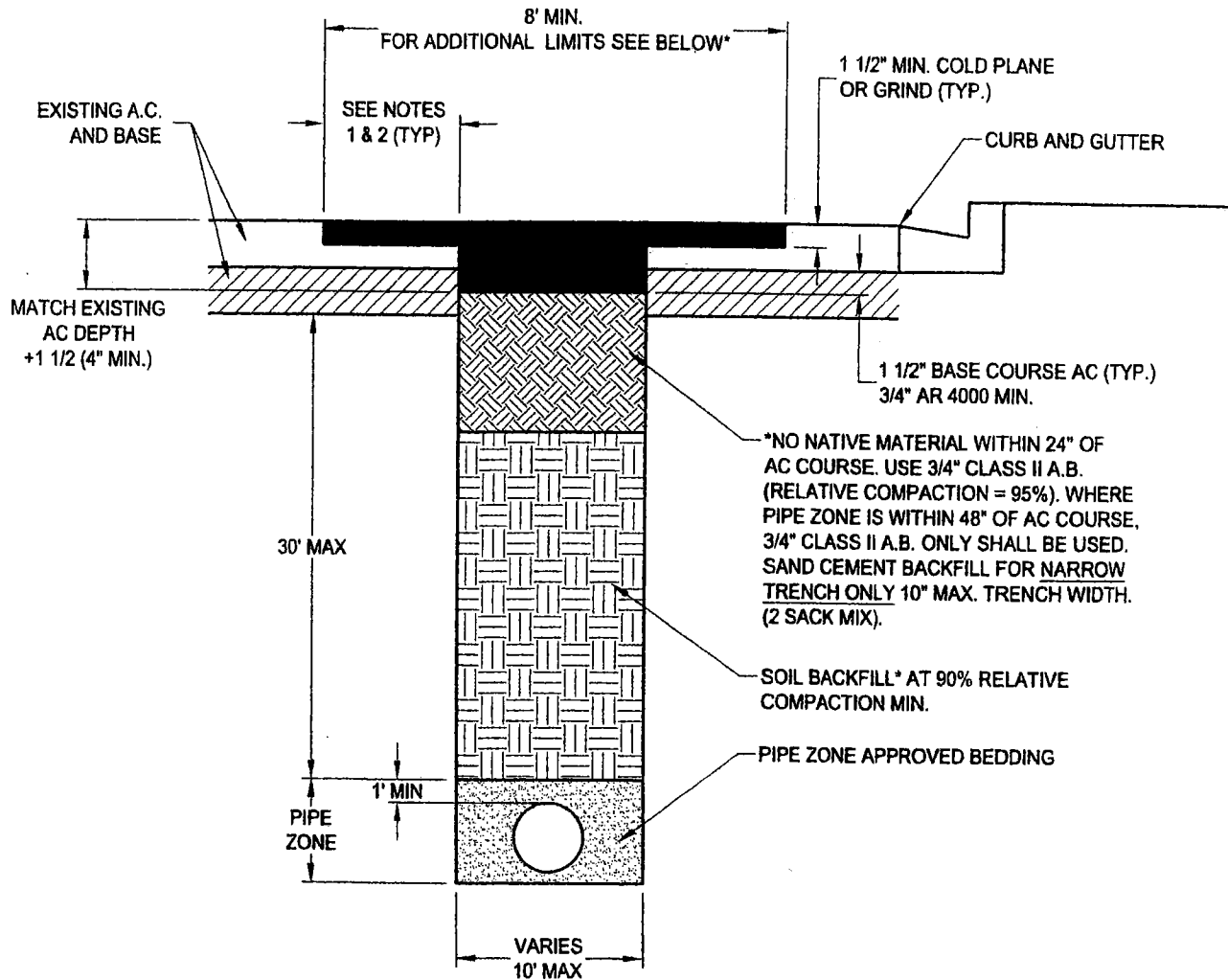
TRENCH BACKFILLING AND RESURFACING
PCI = 85 - 100

APPROVED BY:
Jon Crawford
for CITY ENGINEER



DRAWING NUMBER

ST - 1



NOTES:

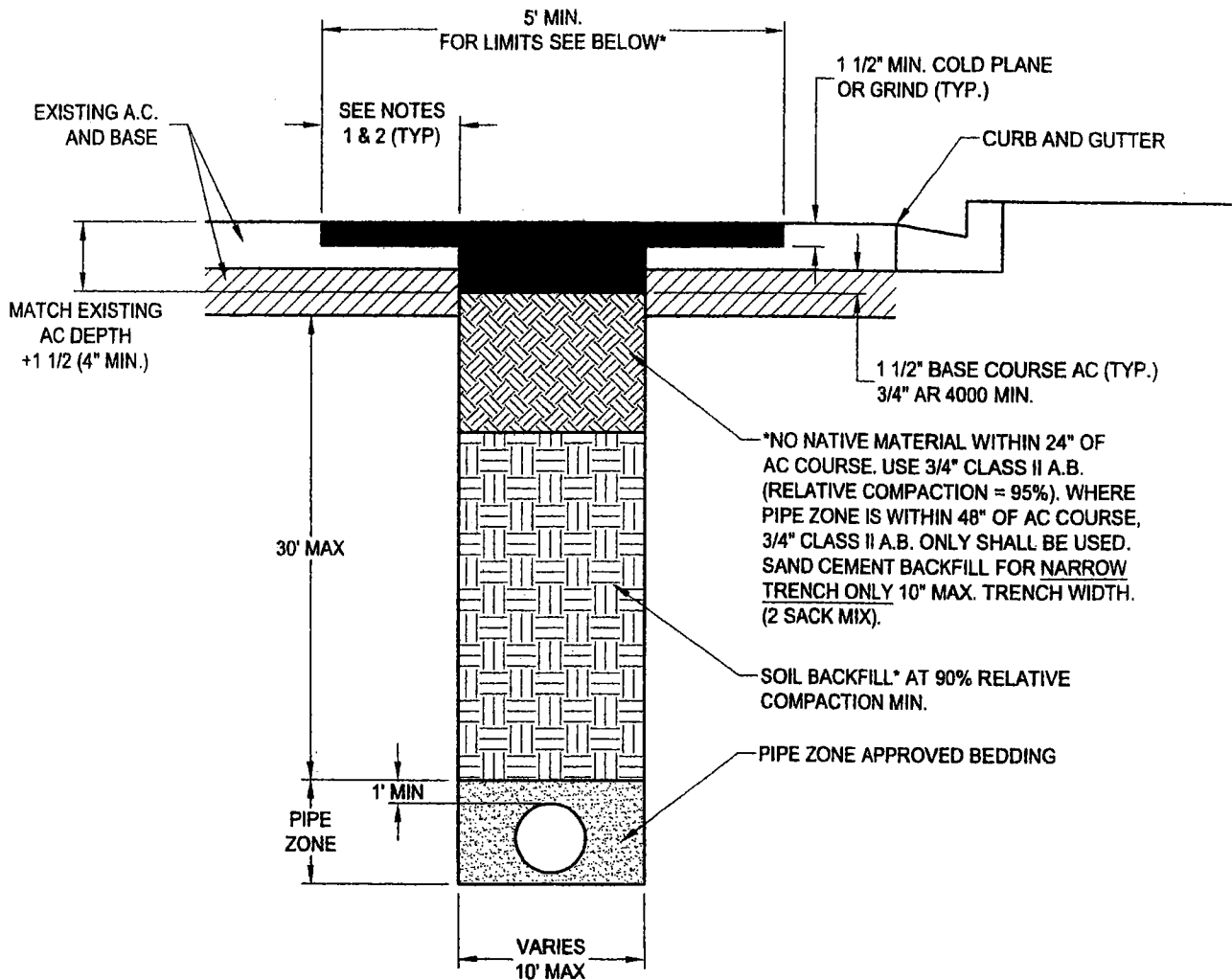
1. 5' MINIMUM REMOVAL REQUIRED WHEN TRENCH IS PERPENDICULAR OR ANGULAR TO FLOW OF TRAFFIC.
2. 2' MINIMUM
3. SEE ST-7 FOR GENERAL NOTES.

*FOR STREETS OTHER THAN LOCAL DESIGNATION GRINDING SHALL BE TO TRAVEL LANE WITHIN 4' OF TRENCH.

*ANY TRENCH WITHIN 3' OF GUTTER LIP SHALL GRIND FROM GUTTER LIP TO EDGE OF TRAVEL LANE, BIKE LANE OR PARKING LANE, WHICHEVER IS LESSER AND STILL MEETS MINIMUMS ABOVE.

DATE: 01/14/2005		NOT TO SCALE		CITY OF ELK GROVE - DEPARTMENT OF PUBLIC WORKS		APPROVED BY: <i>Jon Crawford</i> CITY ENGINEER	
REVISION	BY	APPROVED	DATE	TRENCH AND BACKFILLING RESURFACING PCI = 70 - 85		DRAWING NUMBER ST - 2	





NOTES:

1. 2' MINIMUM REMOVAL REQUIRED WHEN TRENCH IS PERPENDICULAR OR ANGULAR TO FLOW OF TRAFFIC.
2. 2' MINIMUM
3. SEE ST-7 FOR GENERAL NOTES.

*FOR STREETS OTHER THAN LOCAL DESIGNATION GRINDING SHALL BE TO TRAVEL LANE WITHIN 4' OF TRENCH.

*ANY TRENCH WITHIN 3' OF GUTTER LIP SHALL GRIND FROM GUTTER LIP TO EDGE OF TRAVEL LANE, BIKE LANE OR PARKING LANE, WHICHEVER IS LESSER AND STILL MEETS MINIMUMS ABOVE.

DATE: 01/14/2005		NOT TO SCALE	
REVISION	BY	APPROVED	DATE

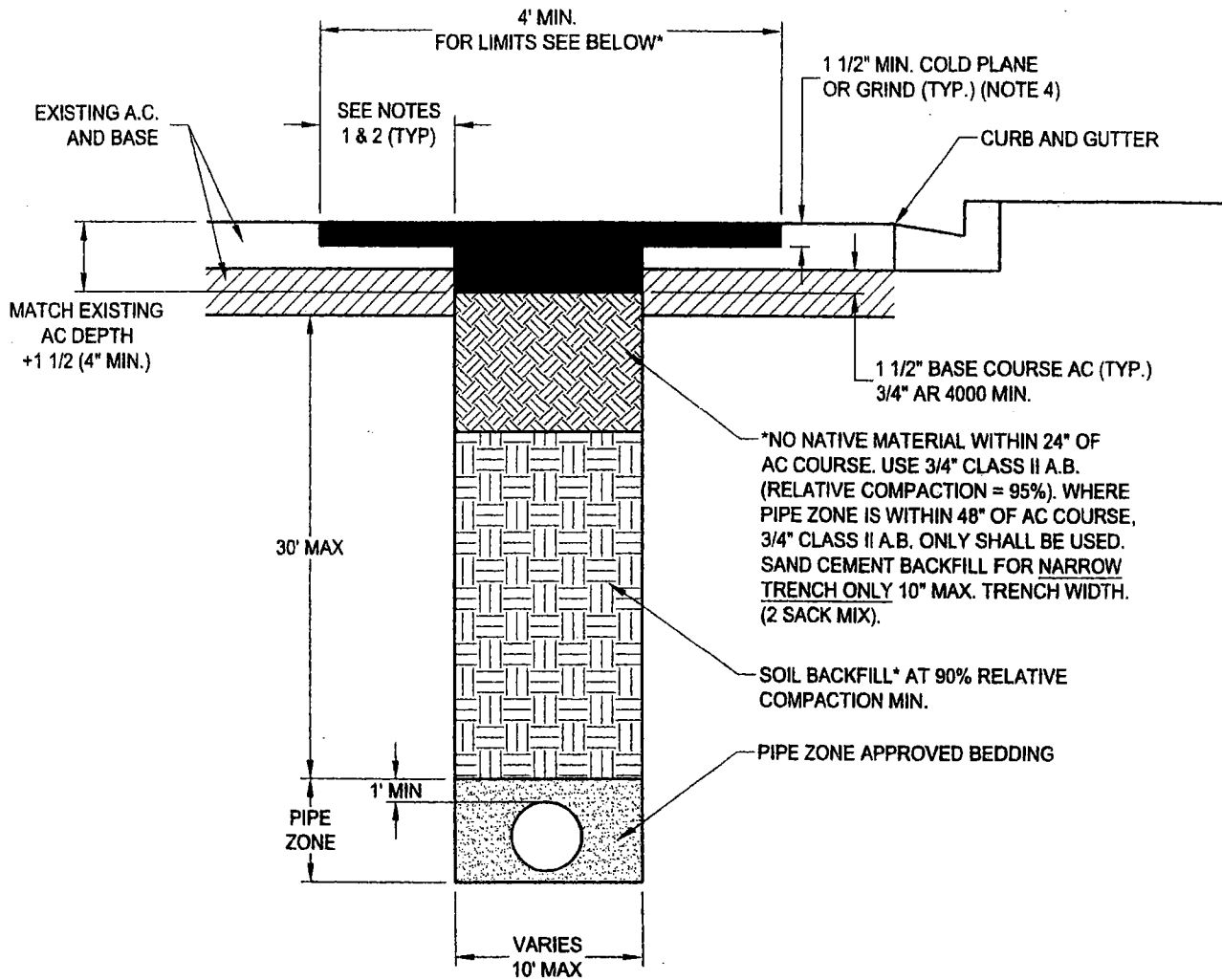
CITY OF ELK GROVE - DEPARTMENT OF PUBLIC WORKS

TRENCH BACKFILLING AND RESURFACING
PCI = 50 - 75

APPROVED BY:
Jon Crawford
for CITY ENGINEER



DRAWING NUMBER
ST - 3



*NO NATIVE MATERIAL WITHIN 24" OF AC COURSE. USE 3/4" CLASS II A.B. (RELATIVE COMPACTION = 95%). WHERE PIPE ZONE IS WITHIN 48" OF AC COURSE, 3/4" CLASS II A.B. ONLY SHALL BE USED. SAND CEMENT BACKFILL FOR NARROW TRENCH ONLY 10" MAX. TRENCH WIDTH. (2 SACK MIX).

SOIL BACKFILL* AT 90% RELATIVE COMPACTION MIN.

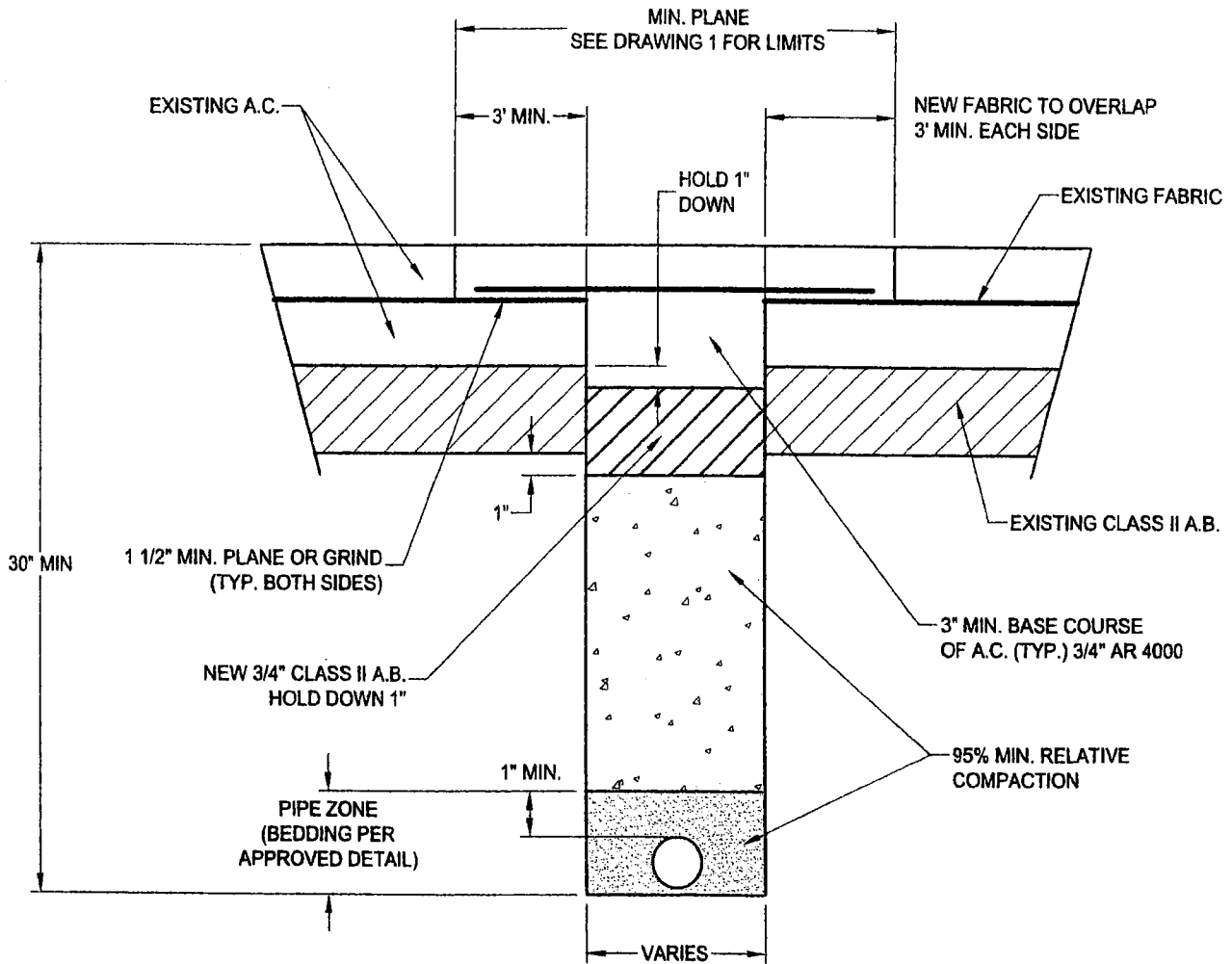
PIPE ZONE APPROVED BEDDING


NOTES:

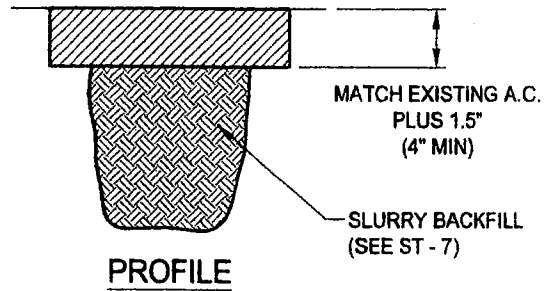
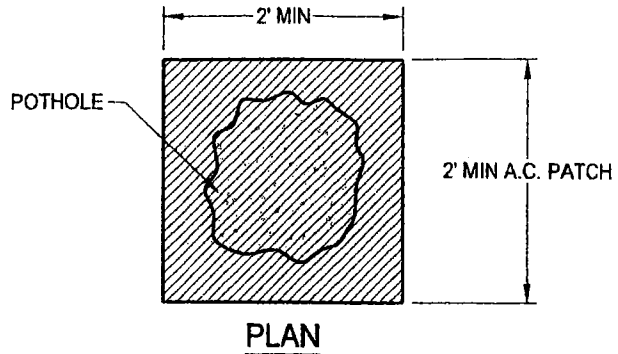
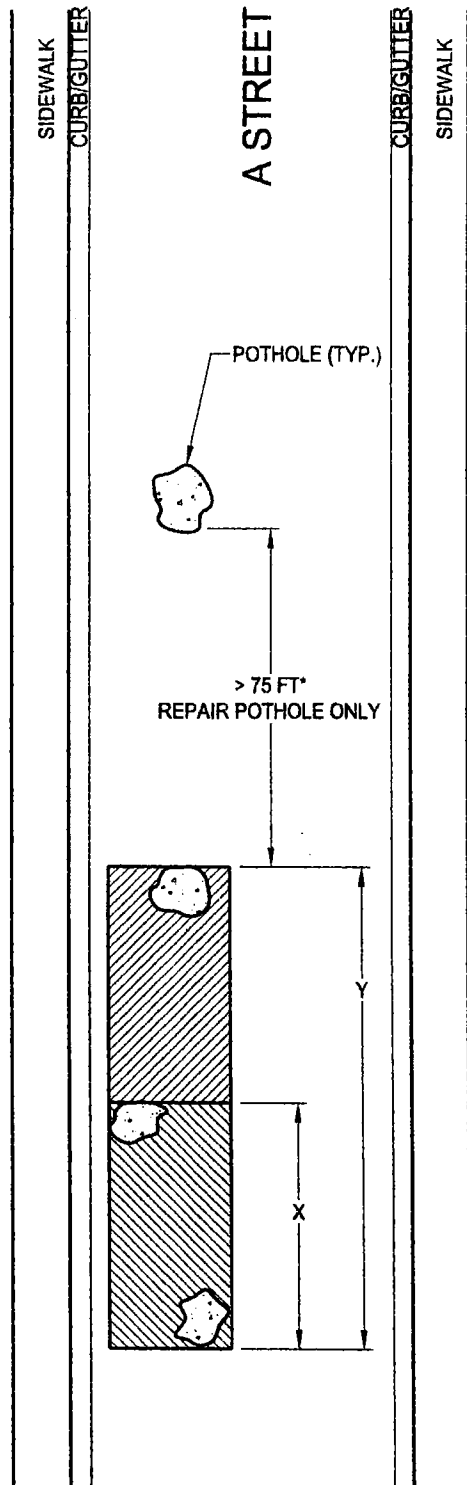
1. 5' MINIMUM REMOVAL REQUIRED WHEN TRENCH IS PERPENDICULAR OR ANGULAR TO FLOW OF TRAFFIC.
2. 1' MINIMUM
3. SEE ST-7 FOR GENERAL NOTES.
4. WHERE EXISTING AC DEPTH IS LESS THAN 2.5 INCHES, REMOVE FULL DEPTH. REPAVE AT 4" MIN.

*ANY TRENCH WITHIN 3' OF GUTTER LIP SHALL GRIND TO GUTTER LIP.

DATE: 01/14/2005		NOT TO SCALE		CITY OF ELK GROVE - DEPARTMENT OF PUBLIC WORKS			APPROVED BY: <i>John Crawford</i> for CITY ENGINEER	
REVISION	BY	APPROVED	DATE	TRENCH BACKFILLING AND RESURFACING PCI < 50				DRAWING NUMBER ST - 4



DATE: 01/14/2005		NOT TO SCALE		CITY OF ELK GROVE - DEPARTMENT OF PUBLIC WORKS		APPROVED BY: <i>Jan Crawford</i> CITY ENGINEER		
REVISION	BY	APPROVED	DATE	TRENCH RESURFACING WHEN FABRIC IS REQUIRED				 DRAWING NUMBER ST - 5



<3 OR MORE POTHOLES>

GRIND AND REPAIR SIMILAR TO TRENCH DETAILS WHEN

- Y < 75 FT (PCI = 85 - 100)
- OR < 50 FT (PCI = 70 - 85)
- OR < 30 FT (PCI = 50 - 70)

<2 POTHOLES>

GRIND AND REPAIR SIMILAR TO TRENCH DETAIL WHEN

- X < 50 FT (PCI = 85 - 100)
- OR < 30 FT (PCI = 70 - 85)
- OR < 15 FT (PCI = 50 - 100)

REFERENCE STANDARD DETAILS:
ST - 1, ST - 2, ST - 3,
ST - 4, DT - 7, ST - 9

DATE: 01/14/2005		NOT TO SCALE	
REVISION	BY	APPROVED	DATE

CITY OF ELK GROVE - DEPARTMENT OF PUBLIC WORKS

APPROVED BY:
Jon Crawford
for CITY ENGINEER

POTHOLE REPAIR



DRAWING NUMBER

ST - 6

GENERAL NOTES

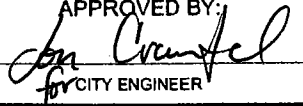

1. PLANE EXISTING ASPHALT TO A 1 1/2" MIN. DEPTH.
2. A TACK COAT SHALL BE APPLIED TO THE AREA PRIOR TO PLACING NEW ASPHALT CONCRETE.
3. ASPHALT CONCRETE SHALL BE AR 4000 WITH 1/2" ROCK MIN. BASE COURSE SHALL BE 3/4" AR 4000.
4. ASPHALT CONCRETE SHALL BE SAND SEALED WITHIN 24 HOURS OF TRENCH RESURFACING.
5. FIELD MEMO WITH FOLLOW UP REPORT REQUIRED FROM PERMITTEE OR DEVELOPER'S GEO-TECHNICAL FIRM WHEN SOIL BACKFILL IS USED.
6. TRAFFIC CONTROL PLAN SHALL BE REQUIRED.
7. VIBRATORY ROLLERS SHALL BE USED ON ALL TRENCH REPAIRS. VIBRATORY PLATES MAY ONLY BE USED WHERE APPROVED IN ADVANCE BY CITY ENGINEER.

GENERAL NOTES (FOR FABRIC)

1. AN APPROVED TACK COAT IS REQUIRED PRIOR TO PLACING NEW FABRIC.
2. NEW FABRIC IS TO OVERLAP EXISTING FABRIC A MINIMUM OF 2' ON EACH SIDE OF THE TRENCH.

GENERAL NOTES (FOR NARROW TRENCH / SLURRY BACKFILL)

1. SAND CEMENT BACKFILL SHALL HAVE A MINIMUM 4" SLUMP (190-E0400)
2. SAND CEMENT BACKFILL SHALL BE THOROUGHLY CONSOLIDATED TO ENCASE CONDUITS. CONCRETE VIBRATORS SHALL BE USED DURING PLACEMENT OF SAND CEMENT.
3. SAND CEMENT SHALL BE SCREENED OFF TO MATCH PLANED PAVEMENT GRADE.
4. ALLOW SAND CEMENT BACKFILL 7 CALENDAR DAYS MINIMUM TO 10 CALENDAR DAYS MAXIMUM CURE AND DRY TIME BEFORE APPLYING ASPHALT CONCRETE.
5. IN SECONDARY, MAJOR OR PRIME ARTERIAL STREETS, TO ACCELERATE CURING TIMES PER NOTE 4, AN APPROVED SET ACCELERATING ADMIXTURE MAY BE USED WITH CITY ENGINEER'S APPROVAL.

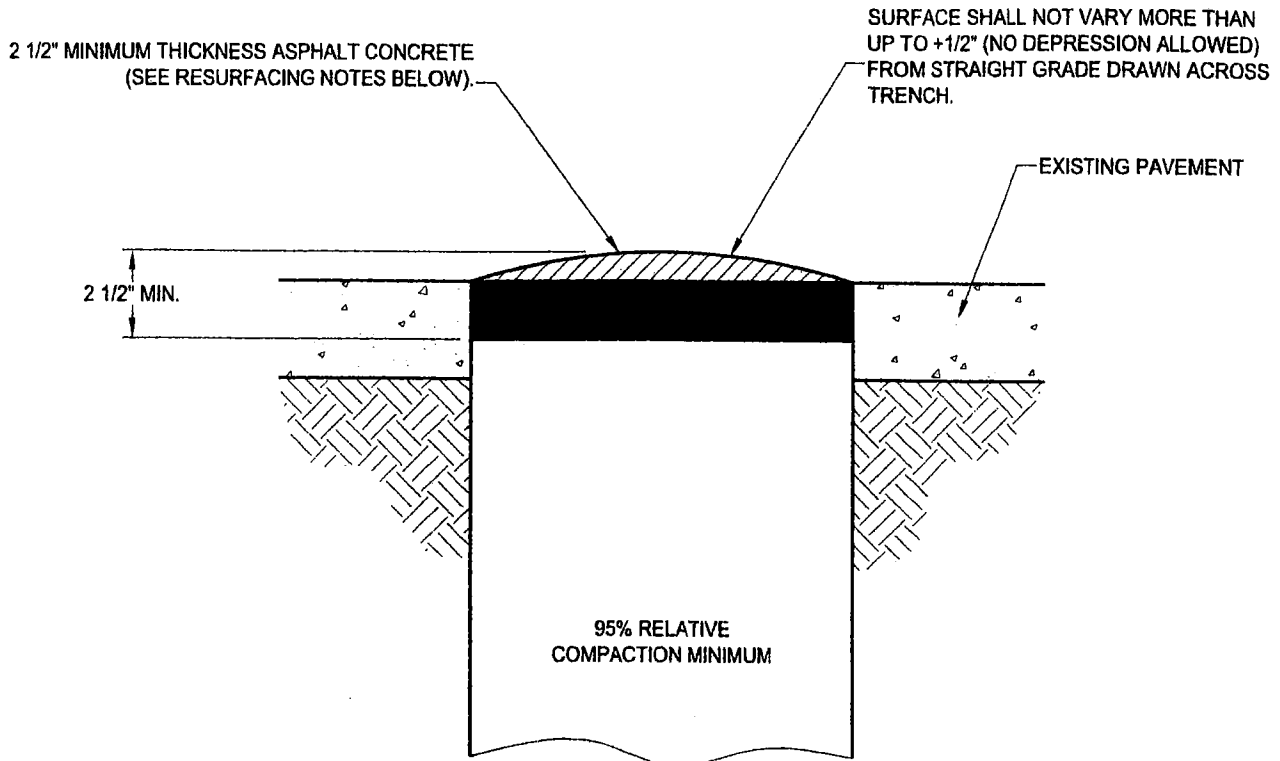
DATE: 01/14/2005		NOT TO SCALE		CITY OF ELK GROVE - DEPARTMENT OF PUBLIC WORKS		APPROVED BY:  CITY ENGINEER			
REVISION	BY	APPROVED	DATE	GENERAL NOTES				DRAWING NUMBER	
									ST - 7

BLANK

DATE: 01/14/2005		NOT TO SCALE	CITY OF ELK GROVE - DEPARTMENT OF PUBLIC WORKS		APPROVED BY: <i>Jon Crawford</i> for CITY ENGINEER
REVISION	BY	APPROVED	DATE	BLANK	DRAWING NUMBER ST - 8



TEMPORARY



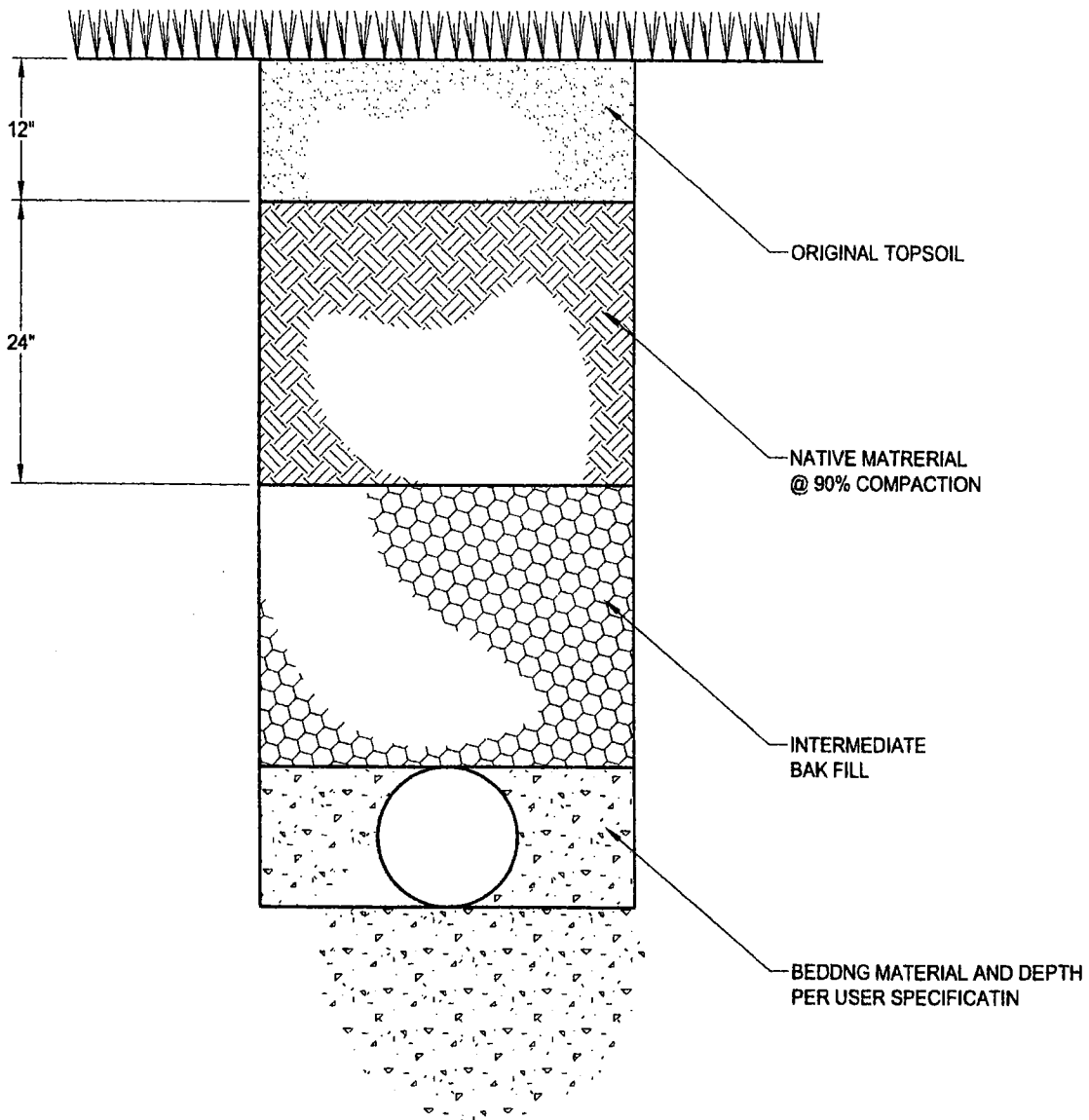
TEMPORARY RESURFACING


- A. 30 DAYS MAXIMUM ON NON-OCCUPIED RESIDENTIAL STREETS (SEE NOTE 2).
- B. 10 DAYS MAXIMUM ON OCCUPIED RESIDENTIAL STREETS (COLD MIX PERMISSABLE).
- C. 72 HOURS MAXIMUM ON LOCAL COLLECTORS, MAJOR ROADS, AND PRIME ARTERIALS (HOT MIX ONLY 3/4" AR 4000).
- D. TRAFFIC CONTROL PLAN REQUIRED.

GENERAL NOTES

- 1. COMPACTION TESTS ARE REQUIRED ON A TRENCH, AND MUST BE PERFORMED WITHIN 24 HOURS OF COMPLETION OF TRENCH BACKFILL. COMPACTION FAILURES MUST BE CORRECTED IMMEDIATELY (RETESTS ARE REQUIRED).
- 2. "COLD MIX" WILL BE ALLOWED TO REMAIN AS SURFACING FOR A MAXIMUM OF 30 DAYS ON NON-OCCUPIED "RESIDENTIAL" STREETS. EARLIER REPLACEMENT WILL BE REQUIRED IF MAINTENANCE OF THE SURFACE IS UNSATISFACTORY, SOLELY AT THE DISCRETION OF THE CITY ENGINEER OR HIS DESIGNATED REPRESENTATIVE.

DATE: 01/14/2005		NOT TO SCALE		CITY OF ELK GROVE - DEPARTMENT OF PUBLIC WORKS		APPROVED BY: <i>Jim Crawford</i> for CITY ENGINEER			
REVISION	BY	APPROVED	DATE	TEMPORARY TRENCH RESURFACING					DRAWING NUMBER
								ST - 9	



DATE: 01/14/2005		NOT TO SCALE		CITY OF ELK GROVE - DEPARTMENT OF PUBLIC WORKS		APPROVED BY <i>Jan Crawford</i> for CITY ENGINEER	
REVISION	BY	APPROVED	DATE	TRENCH SECTIONS IN IMPROVED AREAS HORTICULTURE, LAWN, OR CULTIVATED AREAS		 DRAWING NUMBER ST - 10	