



8400 LAGUNA PALMS WAY • ELK GROVE, CALIFORNIA 95758
TEL: 916.683.7111 • FAX: 916.691.2001 • www.elkgrovecity.org

PUBLIC WORKS DEPARTMENT

Modification of or Addition to Improvement Standards and Details

Modification Number: 032206-1

Effective Date of Change: March 22, 2006

Modifications:

--Change Section 5-3, "Developer's Responsibility", to read as follows:

5-3 DEVELOPER'S RESPONSIBILITY

a. Equipment type. Materials and equipment shall be purchased as required to meet these standards.

(1) Specified Manufacturer(s): Where specific manufacturers are specified in these standards for streetlight materials in a particular zone, the City has determined that for ensuring aesthetics and durability, minimizing inventory costs, and expediting repairs, standardization is in its best interest.

(2) Substitutions: Substitutions will not be considered for a particular project. If a distributor or manufacturer has streetlight products/materials with the exact same visual appearance specified for a zone; it may submit a proposal to the City for evaluation. The City may take up to 90 days to consider adding proposed streetlight materials. The materials will be evaluated using criteria established by the City Engineer. If the streetlight materials meet all the criteria and are equivalent in appearance, quality, and ease of servicing requirements, they may be added to these specifications at the City Engineer's discretion.

b. Alteration of Existing Lighting. Existing street lights which must be relocated or repositioned as a result of the construction of new streets or driveways into a development shall be the responsibility of the developer. A new service can with a step-down transformer, required as a result of the modification, replacement, or relocation of an existing utility service pedestal, shall be the responsibility of the developer.

c. Existing Lighting Operation. The developer shall ensure that power remains on to existing street lights during the period of any modification, replacement or relocation of an existing utility service pedestal. Additionally, power shall be maintained to an existing street light system being replaced until the new street light system is completed and functioning correctly.

d. Service fee. A separate service fee may be charged for the initial inventory processing of new streetlights by the City.

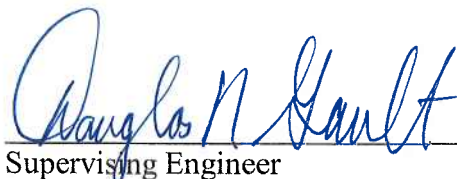
-- Delete the words "ALL LIGHTING SHALL BE CITY FURNISHED. CONTRACTOR SHALL PURCHASE FROM CITY AND CONSTRUCT FOUNDATIONS AND INSTALL." from ST-11, ST-12, and ST-13.

Effect of Modifications:

Developers shall be able to use any vendor or distributor to purchase streetlights. The section will provide a process to introduce and evaluate acceptable alternatives to specified manufacturers.

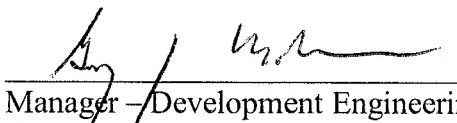
ATTACHMENTS: ST 11
ST-12
ST-13

Request for Modification Initiated By:

 3/28/06

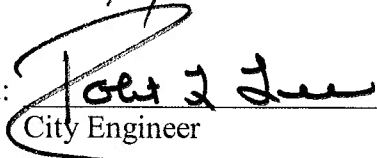
Supervising Engineer Date

Modification Reviewed for Conformity and Consistency to Standards:

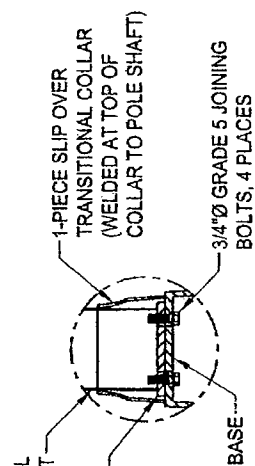
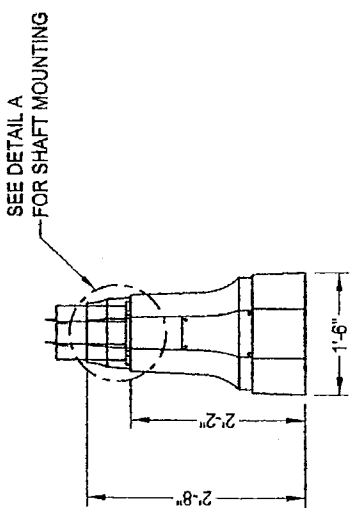
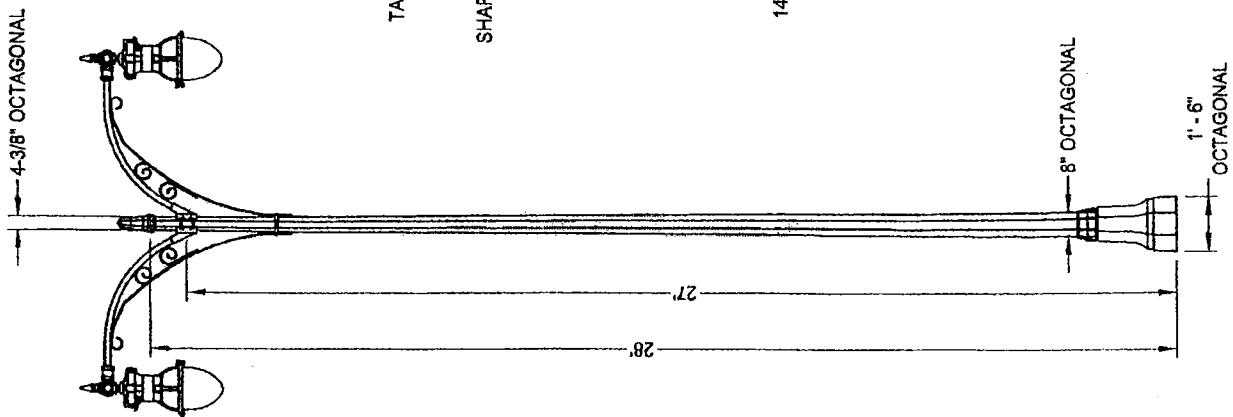
 3/28/06

Manager - Development Engineering Date

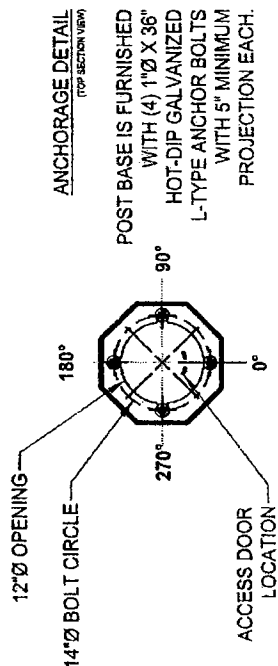
Modification to Improvement Standards Approved:

 3/28/06

City Engineer Date



DETAIL A



ANCHORAGE DETAIL
(TOP SECTION VIEW)

POST BASE IS FURNISHED WITH (4) 1"Ø X 36" HOT-DIP GALVANIZED L-TYPE ANCHOR BOLTS WITH 5" MINIMUM PROJECTION EACH.

SPECIFICATIONS

POST BASE
THE BASE SHALL BE CAST IRON CONSTRUCTION WITH A TAPERED AND STEPPED OCTAGONAL PATTERN. A 1-PIECE SLIP OVER TRANSITION COLLAR COVERS THE BASE OF THE SHAFT. A DOOR IS LOCATED IN THE BASE FOR ANCHORAGE AND WIRING ACCESS. A GROUND SCREW (5/8") SHALL BE PROVIDED INSIDE THE BASE, OPPOSITE THE ACCESS DOOR.

POST SHAFT
THE POST SHAFT SHALL BE 11-GAUGE STEEL WITH A STEEL PLATE FOR MOUNTING TO THE BASE. THE OCTAGONAL SHAFT TAPERS FROM 8" (FLAT TO FLAT) AT THE BOTTOM TO 4-3/8" AT THE TOP, WITH A DECORATIVE OCTAGONAL FINIAL.

CROSSARM
THE CLAMP ON CROSSARM SHALL BE ALUMINUM PIPE CONSTRUCTION WITH FLAT BAR SCROLLS AND 1-1/2" X 1/2" FLAT BAR CLAMP-ON BRACE. ARMS SHALL HAVE A 2" PIPE SLEEVE FOR LUMINAIRE MOUNTING. THE CROSSARM MEASURES 52" FROM POST TO LUMINAIRE CENTERS. A LUMINAIRE LEVELING FITTER SHALL BE MOUNTED TO THE END OF THE PIPE ARM FOR LUMINAIRE MOUNTING.

FINISH
THE POST SHALL BE SHIPPED FINISHED WITH A STANDARD HOLOPHANE BLACK POWDER COAT FINISH.

NOTE
ALL HARDWARE STAINLESS STEEL. ALL EXTERIOR HARDWARE TAMPER RESISTANT. BASE AND SHAFT TO BE SHIPPED AS A ONE-PIECE UNIT.

~~ALL LIGHTING SHALL BE CITY-FURNISHED. CONTRACTOR SHALL PURCHASE FROM CITY AND CONSTRUCT FOUNDATIONS AND INSTALL.~~

9/8/2005	NOT TO SCALE	CITY OF ELK GROVE - PUBLIC WORKS	
REVISION	BY	APPROVED	DATE

APPROVED BY:

CITY ENGINEER

DRAWING NUMBER
ST-11

STREET LIGHTS - ZONE 2
MEDIAN LOCATION (DUAL ARM)

SPECIFICATIONS

POST BASE

THE BASE SHALL BE CAST IRON CONSTRUCTION WITH A TAPERED AND STEPPED OCTAGONAL PATTERN. A 1-PIECE SLIP OVER TRANSITION COLLAR COVERS THE BASE OF THE SHAFT. A DOOR IS LOCATED IN THE BASE FOR ANCHORAGE AND WIRING ACCESS. A GROUND SCREW (5/8") SHALL BE PROVIDED INSIDE THE BASE, OPPOSITE THE ACCESS DOOR.

POST SHAFT

THE POST SHAFT SHALL BE 11-GAUGE STEEL WITH A STEEL PLATE FOR MOUNTING TO THE BASE. THE OCTAGONAL SHAFT TAPERS FROM 8" (FLAT TO FLAT) AT THE BOTTOM TO 4-3/8" AT THE TOP, WITH A DECORATIVE OCTAGONAL FINIAL.

CROSSARM

THE CLAMP ON CROSSARM SHALL BE ALUMINUM PIPE CONSTRUCTION WITH FLAT BAR SCROLLS AND 1-1/2" X 1/2" FLAT BAR CLAMP-ON BRACE. ARMS SHALL HAVE A 2" PIPE SLEEVE FOR LUMINAIRE MOUNTING. THE CROSSARM MEASURES 52" FROM POST TO LUMINAIRE CENTERS. A LUMINAIRE LEVELING FITTER SHALL BE MOUNTED TO THE END OF THE PIPE ARM FOR LUMINAIRE MOUNTING.

FINISH

THE POST SHALL BE SHIPPED FINISHED WITH A STANDARD HOLOPHANE BLACK POWDER COAT FINISH.

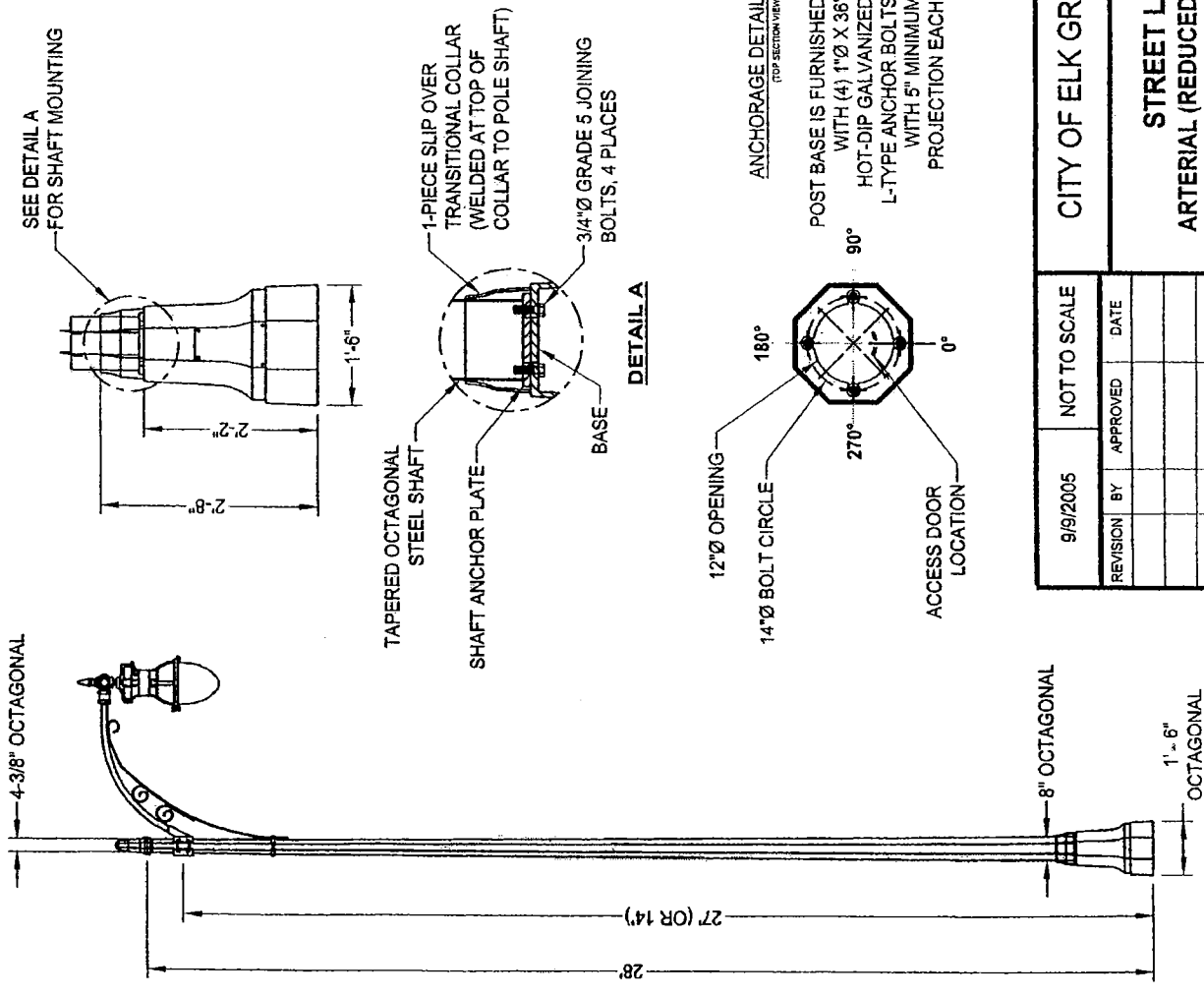
NOTE

ALL HARDWARE STAINLESS STEEL. ALL EXTERIOR HARDWARE TAMPER RESISTANT. BASE AND SHAFT TO BE SHIPPED AS A ONE-PIECE UNIT.

~~ALL LIGHTING SHALL BE CITY FURNISHED. CONTRACTOR SHALL PURCHASE FROM CITY AND CONSTRUCT FOUNDATIONS AND INSTALL.~~

DESCRIPTION

THE ESPLANADE LUMINAIRE IS STYLED TO REPLICATE THE "TEARDROP" LUMINAIRES THAT LIGHTED BOULEVARDS IN THE FIRST HALF OF THIS CENTURY. DESIGNED FOR LIGHT CONTROL AND EASE OF INSTALLATION AND MAINTENANCE, THE ESPLANADE HAS A PRECISION OPTICAL SYSTEM FOR TRUE STREET LIGHTING PERFORMANCE.
FOR COMPLETE LUMINAIRE SPECIFICATIONS, SEE STANDARD DETAIL ST - 14 AND ST - 15.



CITY OF ELK GROVE - PUBLIC WORKS

STREET LIGHTS - ZONE 2
ARTERIAL (REDUCED MEDIAN) AND COLLECTOR
STREET LIGHT POLE

9/9/2005	NOT TO SCALE
REVISION BY	APPROVED DATE

APPROVED BY:
[Signature]
CITY ENGINEER

DRAWING NUMBER
ST - 12

SPECIFICATIONS

POST DESCRIPTION

THE LIGHTING POST SHALL BE ALL ALUMINUM, ONE-PIECE CONSTRUCTION, WITH A CLASSIC FLUTED BASE DESIGN. THE SHAFT SHALL BE 04" SMOOTH. THE POST SHALL BE SHIPPED WITH A STANDARD HALOPHANE BLACK POWDER COAT FINISH.

MATERIALS

THE BASE SHALL BE HEAVY WALL, CAST ALUMINUM PRODUCED FROM CERTIFIED ASTM 356.1 INGOT PER ASTM B-179-95A OR ASTM B26-95. THE STRAIGHT SHAFTS SHALL BE EXTRUDED FROM ALUMINUM, ASTM 6061 ALLOY, HEAT TREATED TO A T6 TEMPER. ALL HARDWARE SHALL BE TAMPER RESISTANT STAINLESS STEEL. ANCHOR BOLTS TO BE COMPLETELY HOT DIP GALVANIZED.

CONSTRUCTION

THE SHAFT SHALL BE DOUBLE WELDED TO THE BASE CASTING AND SHIPPED AS ONE PIECE FOR MAXIMUM STRUCTURAL INTEGRITY. THE SHAFT SHALL BE CIRCUMFERENTIALLY WELDED INSIDE THE BASE CASTING AT THE TOP OF THE ACCESS DOOR, AND EXTERNALLY WHERE THE SHAFT EXITS THE BASE. ALL EXPOSED WELDS BELOW 8" SHALL BE GROUND SMOOTH; ALL WELDING SHALL BE PER ANSIAWS D1.2-90. ALL WELDERS SHALL BE CERTIFIED PER SECTION 5 OF ANSIAWS D1.2-90.

DIMENSIONS

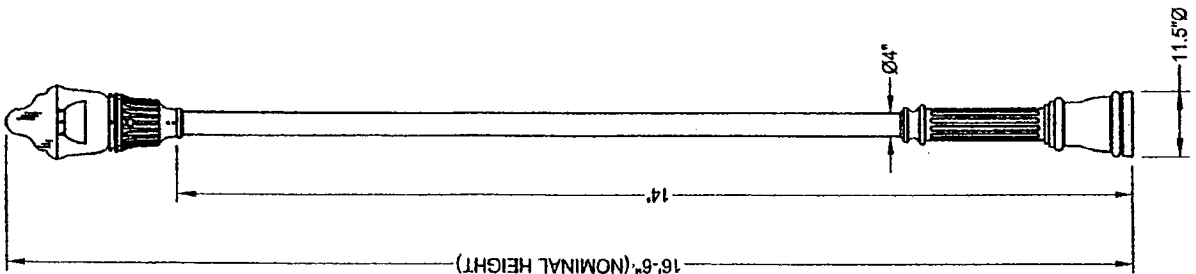
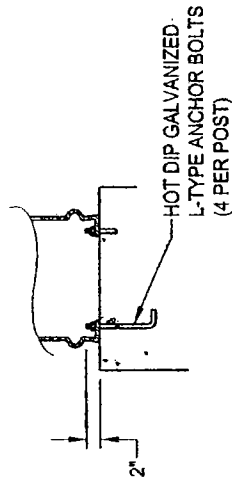
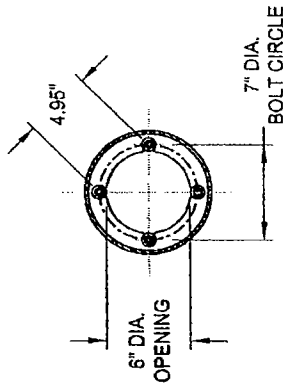
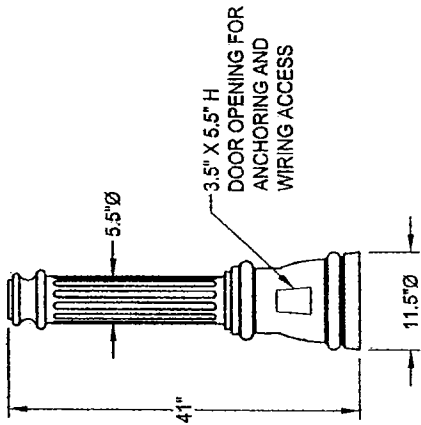
THE POST SHALL BE 14' IN HEIGHT WITH AN 11-1/2" DIAMETER BASE. THE SHAFT DIAMETER SHALL BE 4". AT THE TOP OF THE POST, AN INTEGRAL 3" O.D. TENON WITH A TRANSITIONAL DONUT SHALL BE PROVIDED FOR LUMINAIRE MOUNTING.

INSTALLATION


THE POST SHALL BE PROVIDED WITH FOUR, HOT DIP GALVANIZED L-TYPE ANCHOR BOLTS TO BE INSTALLED ON AN 8" DIAMETER BOLT CIRCLE. A DOOR SHALL BE PROVIDED IN THE BASE FOR ANCHORAGE AND WIRING ACCESS. A GROUNDING SCREW (5/8") SHALL BE PROVIDED INSIDE THE BASE OPPOSITE THE DOOR.

NOTE


ALL LIGHTING SHALL BE CITY FURNISHED. THE CONTRACTOR SHALL PURCHASE FROM CITY AND CONSTRUCT FOUNDATIONS AND INSTALL.



9/9/2005	NOT TO SCALE
REVISION BY	APPROVED
	DATE

APPROVED BY:  CITY ENGINEER

DRAWING NUMBER **ST - 13**



CITY OF ELK GROVE - PUBLIC WORKS

STREET LIGHTS - ZONE 2

PEDESTRIAN TRAILS AND RESIDENTIAL STREETS