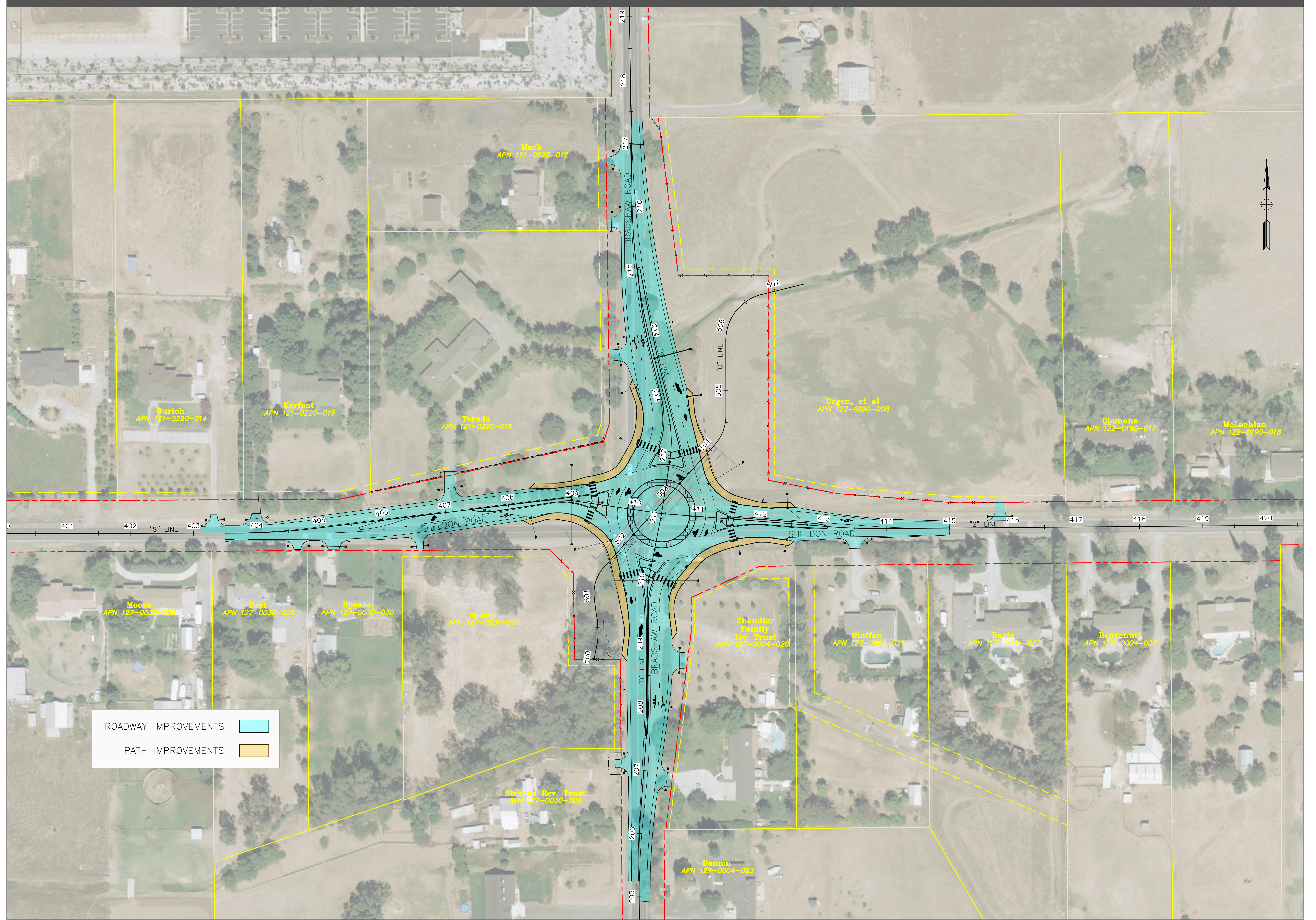




# ROUNDBABOUT

## SHELDON & BRADSHAW INTERSECTION



|                      |  |
|----------------------|--|
| ROADWAY IMPROVEMENTS |  |
| PATH IMPROVEMENTS    |  |

Map labels include APN numbers and names for various properties:

- Moore APN 127-0030-028
- Reel APN 127-0030-023
- Spence APN 127-0030-030
- Spence APN 127-0030-001
- Moore APN 121-0220-014
- Earfoot APN 121-0220-013
- Torala APN 121-0220-016
- Meek APN 121-0220-017
- Stevens Rev. Trust APN 127-0030-002
- Damon APN 127-0004-023
- Chandler Family Etc Trust APN 127-0004-020
- Shaffer APN 127-0004-027
- Bates APN 127-0004-023
- Bevenett APN 127-0004-027
- Degea, et al APN 122-0190-008
- Clemons APN 122-0190-019
- McLachlan APN 122-0190-018

Map grid labels include 'S' LINE (401-420) and 'C' LINE (500-507).