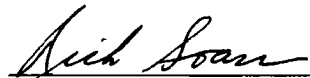


**RESOLUTION NO. 2003-94**

**A RESOLUTION OF THE CITY COUNCIL OF THE CITY OF ELK GROVE  
APPROVING THE FINAL MAP FOR SUBDIVISION NO. 94-0629.1 MAP OF MERGER  
AND RESUBDIVISION OF LOTS 136-143 WINDSOR DOWNS UNIT NO. 1**


**BE IT RESOLVED AND ORDERED** that the City Council of the City of Elk Grove pursuant to Government Code section 66458, hereby approves the Final Subdivision Map submitted at the Elk Grove City Council meeting in connection with **Lennar Renaissance Inc., a California Corporation**, and the subdivision designated as Subdivision No. 94-0629.1 Map of Merger and Resubdivision of Lots 136-143 Windsor Downs Unit No.1.

**PASSED AND ADOPTED** by the City Council of the City of Elk Grove on this 21<sup>st</sup> day of May 2003.




\_\_\_\_\_  
RICK SOARES, MAYOR of the  
CITY OF ELK GROVE

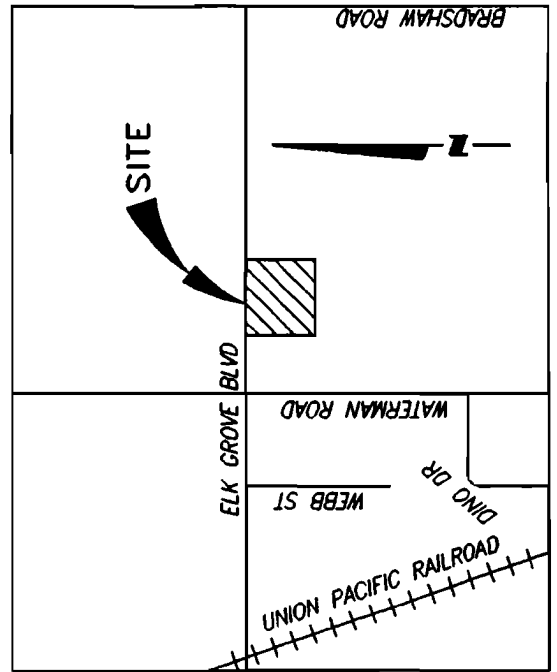
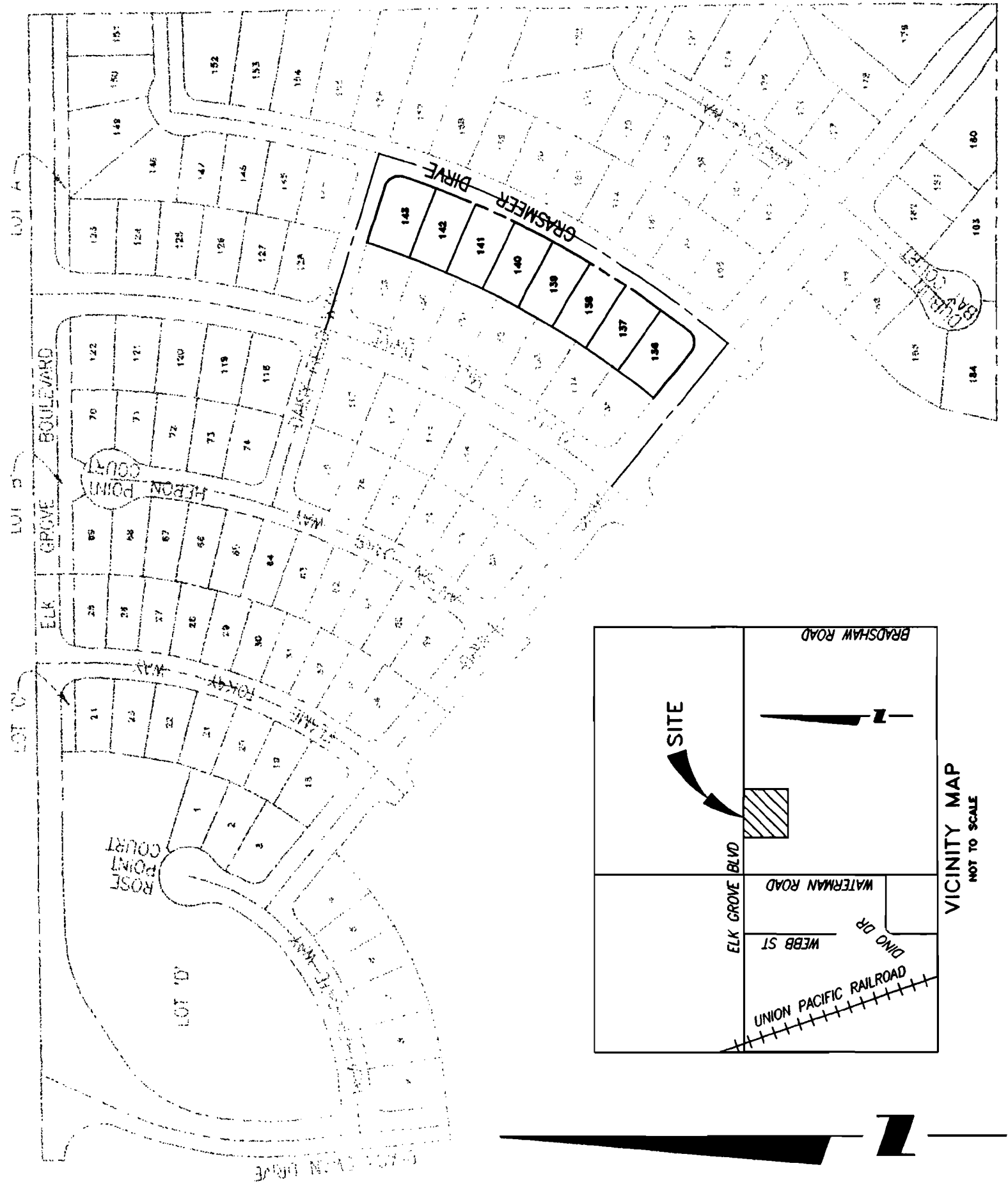
ATTEST:

  
\_\_\_\_\_  
PEGGY E. JACKSON, CITY CLERK

APPROVED AS TO FORM:

  
\_\_\_\_\_  
ANTHONY B. MANZANETTI,  
CITY ATTORNEY

**AYES: Soares, Scherman, Briggs, Cooper, Leary**  
**NOES: None**  
**ABSTAIN: None**  
**ABSENT: None**

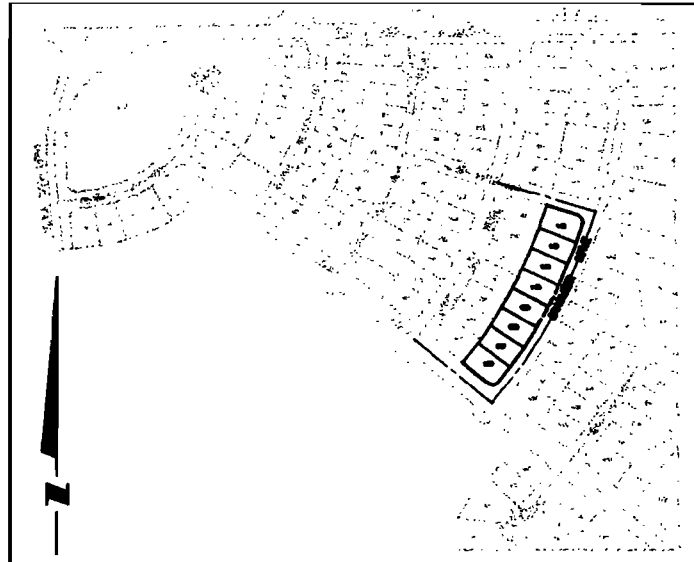


VICINITY MAP  
NOT TO SCALE

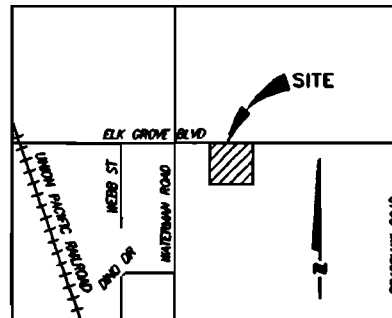
**MAP OF MERGER AND RESUBDIVISION NO. EG-94-0629.1 OF  
 LOTS 136-143 WINDSOR DOWNS UNIT NO. 1 (308 B.M. 4)  
 CITY OF ELK GROVE, COUNTY OF SACRAMENTO, CALIFORNIA  
 MURRAY SMITH & ASSOCIATES  
 APRIL, 2003  
 SHEET 1 OF 2**

**SURVEY STATEMENT**

THE UNDERSIGNED HEREBY CERTIFIES TO THE PREPARATION AND RECORDING OF THIS MAP OF MERGER AND RESUBDIVISION OF LOTS 136-143 OF "WINDSOR DOWNS UNIT NO. 1" (308 B.M. 4).



**SHEET INDEX**



**VICINITY MAP  
 NOT TO SCALE**

LEWIS SURVEYING, INC., A CALIFORNIA CORPORATION

BY \_\_\_\_\_ BY \_\_\_\_\_

STATE OF CALIFORNIA )  
 COUNTY OF SACRAMENTO ) SS

ON \_\_\_\_\_ BEFORE ME, \_\_\_\_\_ A NOTARY PUBLIC PERSONALLY APPOINTED \_\_\_\_\_ AND PERSONALLY DESIGNATED TO ME, OR DESIGNATED TO ME ON THE BASIS OF SUBSCRIBED EVIDENCE, TO BE THE PERSONS WHOSE NAMES ARE SUBSCRIBED TO THE FOREGOING INSTRUMENT AND ACKNOWLEDGED TO ME THAT THEY EXECUTED THE SAME IN THEIR ALLEGED CAPACITIES AND THAT BY THEIR SIGNATURES ON THE INSTRUMENT THE PERSONS OR THE ENTITY UPON BEHALF OF WHICH THE PERSONS ACTED, CONFIRMED THE INSTRUMENT.

SIGNATURE \_\_\_\_\_

PRINT NAME \_\_\_\_\_

MY COMMISSION EXPIRES ON \_\_\_\_\_

MY PRINCIPAL PLACE OF BUSINESS IS THE COUNTY OF \_\_\_\_\_

**SALES REPORT**

A SALES REPORT FOR THIS SUBDIVISION WAS PREPARED BY WALLACE-KIMM & ASSOCIATES, INC., PROJECT NO. 06291 DATED JULY 11, 2001. A COPY OF THIS REPORT IS AVAILABLE FOR PUBLIC INSPECTION AT THE RECEPTION OF PUBLIC WORKS OF THE CITY OF ELK GROVE.

**RECORDING STATEMENT**

THIS MAP OF MERGER AND RESUBDIVISION OF LOTS 136-143 OF "WINDSOR DOWNS UNIT NO. 1" (308 B.M. 4) WAS PREPARED BY ME OR UNDER MY SUPERVISION AND IS BASED UPON A FIELD SURVEY IN CONFORMANCE WITH THE REQUIREMENTS OF THE SUBDIVISION MAP ACT AND LOCAL ORDINANCE AT THE REQUEST OF LEWIS SURVEYING, INC., A CALIFORNIA CORPORATION ON AUGUST 28, 2002. I HEREBY STATE THAT THIS FINAL MAP SUBSTANTIALLY CONFORMS TO THE CORRECTLY APPROVED TENTATIVE MAP, THAT THE BOUNDARIES WILL BE OF THE CHARACTER AND WILL OCCUPY THE PORTIONS DESCRIBED AND WILL BE SET BY AUGUST 28, 2003, AND THAT SAID BOUNDARIES WILL BE SUFFICIENT TO ENABLE THE SURVEY TO BE REPRODUCED. THE AREA WHICH THE HEAVY BORDER CONTOUR OF 1.000 ACRES GROUP AND CONTOUR 6 REPRESENTS LOTS.

DATED \_\_\_\_\_ BY MICHAEL S. COHEN LS 6880  
 EXPIRES DATE: DECEMBER 31, 2005



**CITY COUNCIL STATEMENT**

I HEREBY STATE THAT I HAVE EXAMINED THIS MAP OF MERGER AND RESUBDIVISION OF LOTS 136-143 OF "WINDSOR DOWNS UNIT NO. 1" (308 B.M. 4) AND FIND IT TO BE SUBSTANTIALLY THE SAME AS THE TENTATIVE MAP APPROVED BY THE BOARD OF SUPERVISORS OF THE COUNTY OF SACRAMENTO, AND ANY APPROVED ALTERNATIVE THEREOF, THAT ALL PROVISIONS OF THE SUBDIVISION MAP ACT AND ALL APPLICABLE CITY ORDINANCES HAVE BEEN COMPLIED WITH AND THAT I AM CONVINCED THAT SAID MAP IS TECHNICALLY CORRECT.

DATED \_\_\_\_\_

CITY ENGINEER  
 MICHAEL L. LAKE  
 EXPIRES DATE: 12/31/05

**CITY CLERK'S STATEMENT**

I HEREBY STATE THAT THE CITY COUNCIL OF THE CITY OF ELK GROVE HAS APPROVED THIS MAP OF MERGER AND RESUBDIVISION OF LOTS 136-143 OF "WINDSOR DOWNS UNIT NO. 1" (308 B.M. 4).

DATED \_\_\_\_\_

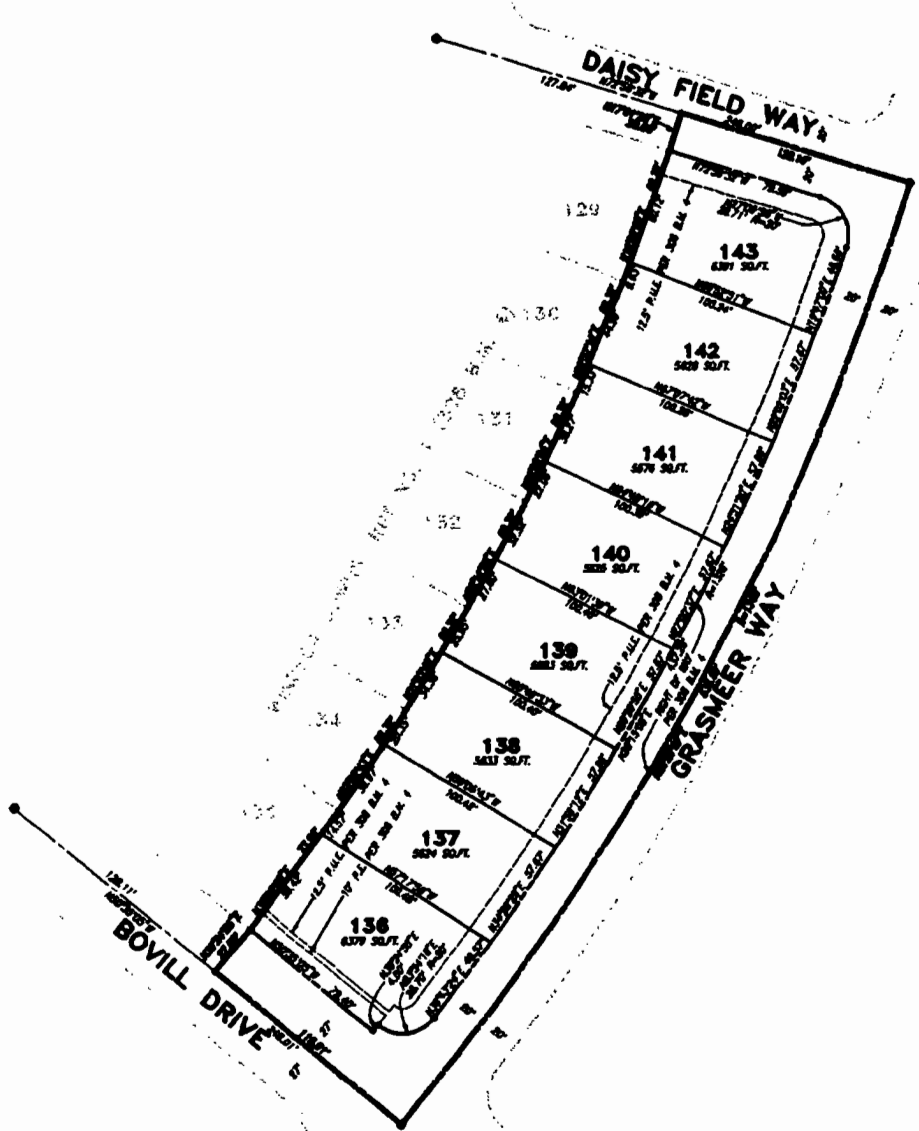
CLERK OF THE CITY COUNCIL  
 CITY OF ELK GROVE, CALIFORNIA

**RECORDING STATEMENT**

FILED THIS \_\_\_\_\_ DAY OF \_\_\_\_\_, 2003 AT \_\_\_\_\_ IN BOOK \_\_\_\_\_ OF MAPS AT FILE \_\_\_\_\_ AT THE OFFICE OF LEWIS SURVEYING, INC., A CALIFORNIA CORPORATION, WHILE TO THE LARGES INCLUDED IN THIS SUBDIVISION BEING VIEWED AS PER CHAPTER NO. \_\_\_\_\_ ON FILE IN THIS OFFICE.

WITNESSES: \_\_\_\_\_ COUNTY RECORDER  
 \_\_\_\_\_ DEPUTY

**MAP OF MERGER AND RESUBDIVISION NO. EG-94-0629.1 OF  
 LOTS 136-143 WINDSOR DOWNS UNIT NO. 1 (308 B.M. 4)  
 CITY OF ELK GROVE, COUNTY OF SACRAMENTO, CALIFORNIA  
 MURRAY SMITH & ASSOCIATES  
 APRIL, 2003 SCALE: T=40'  
 SHEET 2 OF 2**



**NOTE OF RECORD**  
 THE DATE OF RECORD FOR THIS MAP IS COMPLETE OF DAISY FIELD WAY AS SHOWN ON THE MAP OF "WINDSOR DOWNS UNIT NO. 1 (308 B.M. 4) AND EXPLAINED BY FOUND SURVEYOR SHOWN HEREON. THE RECORD IS SHOWN ON SHEET 1 OF 2 OF THIS MAP.

- NOTES**
- 1) DIMENSIONS ALONG CURVED LINES ARE CHORD MEASUREMENTS.
  - 2) THERE ARE PUBLIC EASEMENTS IF IN VIEW ADJACENT TO THE EAST AND WEST SIDES HEREON AS PER WINDSOR DOWNS UNIT NO. 1 (308 B.M. 4)
  - 3) SET 1/2" MARKS AT ROAD LAY CORNERS, OUT CORN IN TOP BACK OF WALK FOR FRONT LOT CORNERS.
  - 4) LOTS SHOWN HEREON ARE NUMBERED 136-143.

- LEGEND**
- - BENCHMARK POINT
  - - FOUND 3/4" OUCH PIPE IN STREET CENTERLINE
  - P.U.L. - PUBLIC UTILITY EASEMENT
  - - CENTERLINE
  - P.E. - PERMITS EASEMENT
  - B.M. - BOOK OF MAPS

