

OPTION 2

NATIVE OR OTHER SELECT
BACKFILL 90%
RELATIVE COMPACTION

WEEP HOLE SHALL BE CENTERED IN A
MINIMUM OF 1 C.F. OF 3/4" CRUSHED
ROCK CONFORMING TO SECTION 50
"CLEAN CRUSHED ROCK", TYPE B.
ROCK SHALL BE WRAPPED IN FABRIC
CONFORMING TO SECTION 50
"GEOTEXTILE FABRIC". HOLE SHALL BE
2" DIAMETER PIPE CUT TO FIT FLUSH
WITH CHANNEL FACE. (TYPICAL)

4" POURED-IN-PLACE
CONCRETE

6' CHAIN LINK FENCE

ALTERNATE FOR
LINING TO R/W

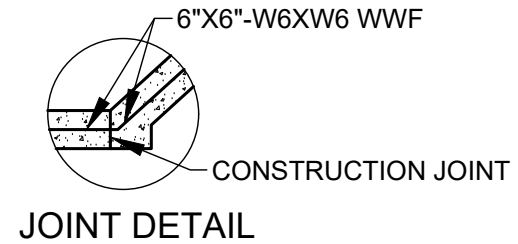
R/W

3" POURED-IN-PLACE
CONCRETE OR AIR-BLOWN
MORTAR

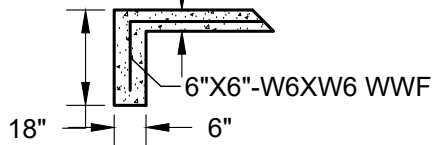
INVERT

SEE JOINT DETAIL

TYPICAL FULL LINING



OPTION 1 VAR.



CUTOFF WALL

TO BE PLACED ALONG ENTIRE
END OF LINED SECTION AT
BEGINNING AND AT END OF
LINING

DATE: 09/22/2007		NOT TO SCALE	
REVISION	BY	APPROVED	DATE

CITY OF ELK GROVE - PUBLIC WORKS

APPROVED BY:

Paul M. Muddoch

10/24/2018

CITY ENGINEER

DATE

**LINED CHANNEL SECTION
(SHEET 2 OF 2)**



DRAWING NUMBER

SD - 30.2