

Phone: 916.683.7111  
Fax: 916.627.4400

www.elkgrovecity.org

PUBLIC WORKS  
8401 Laguna Palms Way  
Elk Grove, California 95758



## Standards Update Transmittal

Reference Number: 2024-03  
Standards: Standard Drawing, T-21

### Update:

1. Modification to Standard Drawing:
  - a. T-21, TRAFFIC SIGNAL MAST ARM SIGN ASSEMBLY, removed block numbers, font and format changes on standard drawing, revised verbiage of specifications.
  - b. T-21, TRAFFIC SIGNAL MAST ARM SIGN ASSEMBLY, renamed drawing to T21.1 and T21.2

### Effect of Update:

1. New layout and description of overhead street name sign will allow contractors to furnish signs within specification.

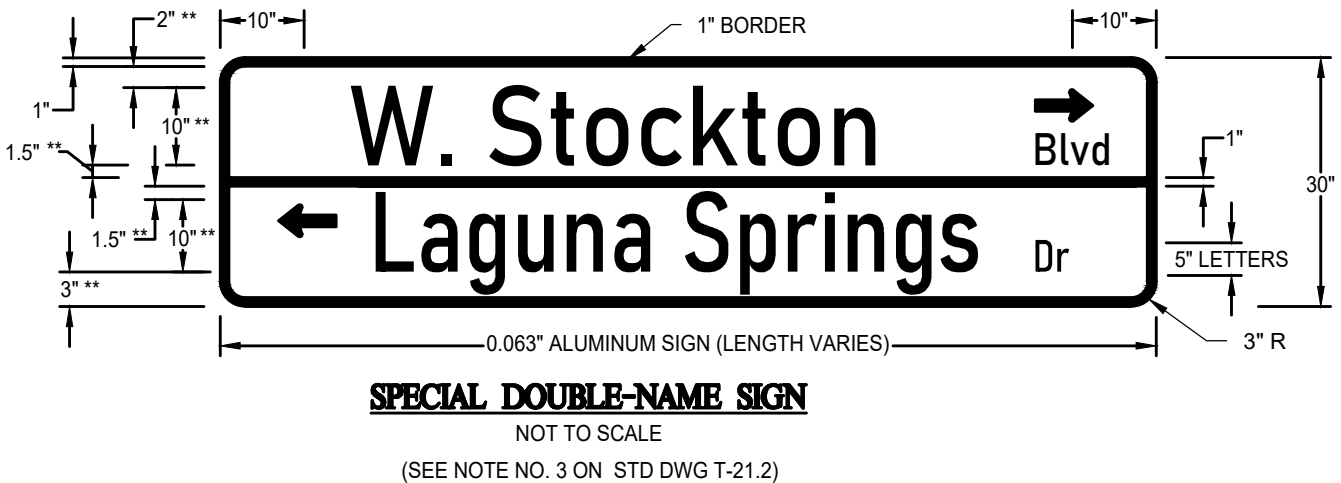
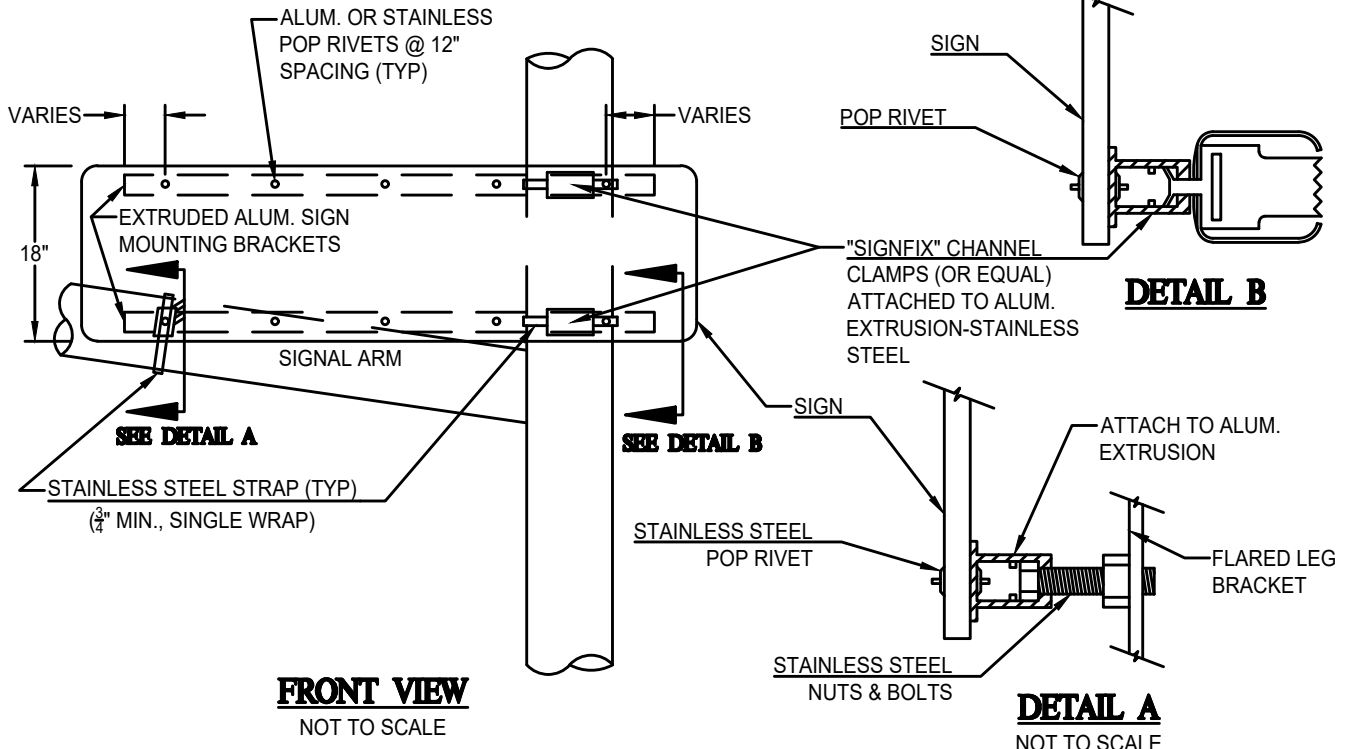
Request for Update Initiated By: Joshua Drake, Street Supervisor July 31, 2023

Update Reviewed for Conformity and Consistency to Standards:

Shoaib Ahrary 3/11/2024 | 11:09 AM PDT  
Shoaib Ahrary, PE, ESD Manager Date

Update to Standards Approved:

Jeffrey R. Werner 3/12/2024 | 6:30 AM PDT  
Jeffrey R. Werner, PE, City Engineer Date



- \* IN THE EVENT THE STREET NAME INCLUDES A LOWER CASE LETTER g, j, p,q, or y, THE TOP AND BOTTOM BUFFER DISTANCES SHALL BE ADJUSTED TO 2.25" and 5.75", RESPECTIVELY.
- \*\* IN THE EVENT THE STREET NAME INCLUDES A LOWER CASE LETTER g, j, p,q, or y, THE SPECIAL DOUBLE-NAME SIGN LAYOUT SHALL BE RECONFIGURED AS FOLLOWS: USE AN EIGHT INCH LETTER FOR UPPER CASE LETTERS AND SIX INCH LETTER FOR LOWER CASE LETTERS, REDUCE THE SPACING BETWEEN THE 1" BORDER AND THE WORD TO 1.25", AND CENTER THE WORD VERTICALLY.

DATE 6/21/2021		NOT TO SCALE	
REVISION	BY	APPROVED	DATE
01	SJB	SMA	02-23-2024

CITY OF ELK GROVE - PUBLIC WORKS


---

**TRAFFIC SIGNAL MAST ARM  
SIGN ASSEMBLY (1 OF 2)**

APPROVED BY:  
*Jeffrey R. Werners* 3/12/2024  
CITY ENGINEER DATE

---

DRAWING NUMBER  
**T - 21.1**



NOTES FOR TRAFFIC-SIGNAL-ARM SIGN MOUNTING:

1. ALL MATERIAL FURNISHED SHALL BE RUST RESISTANT. ALL SIGN HARDWARE SHALL BE ALUMINUM AND ANY MOVING PARTS MUST BE MADE OF STAINLESS STEEL TO PREVENT RUSTING.
2. THE SIGN MOUNTING EXTRUDED ALUMINUM MOUNTING BRACKETS SHALL BE EITHER MEDIUM ALUMINUM EXTRUSIONS (SIGNFIX PART NO. SX-073) OR LARGER ALUMINUM EXTRUSIONS (SIGNFIX PART NO. SX-0130). EXTRUDED ALUMINUM MOUNTING BRACKETS MUST BE BY SIGNFIX OR MUST BE DIRECTLY ADAPTABLE TO UNIVERSAL SIGNFIX CHANNEL CLAMPS E.P. (PART NO. SX-0220) OR EQUAL. FLARED LEG MOUNTING BRACKET FOR MOUNTING TO POLE OR MAST ARM SHALL BE HAWKINS PART NO. M2G-FUB OR APPROVED EQUAL. THREADED PORTION OF BRACKET SHALL ACCEPT COURSE THREAD 5/16 INCH ALL-THREAD BOLT.
3. SINGLE STREET NAME SIGN SHALL HAVE NAME AND SUFFIX CENTERED IN SIGN. SIGNS SHALL BE SINGLE FACE AND FABRICATED ON ALUMINUM BLANKS 0.063-INCH THICKNESS. BLANK SHALL BE 18-INCHES IN WIDTH AND VARY IN LENGTH DEPENDING ON THE NUMBER OF LETTERS OF THE STREET (MIN. OF 6-FEET IN LENGTH). SIGN BLANK SHALL HAVE GREEN ELECTROCUT FILM (EC) OVER 3M DIAMOND GRADE. REFLECTIVE VINYL SHEETING. UPPER CASE LETTERS SHALL BE 10-INCHES AND LOWER CASE LETTERS SHALL BE 7.5-INCHES. ALL LETTERS SHALL BE HIGHWAY FRONT "D". SIGN SHALL HAVE 1-INCH WHITE BORDER COVERING THE ENTIRE EDGE OF SIGN BLANK. CORNERS SHALL BE NEATLY ROUNDED TO A 3-INCH RADIUS. THERE SHALL BE 10-INCHES SPACING BETWEEN BOARDER AND SIDES OF STREET NAME. LETTERS SHALL BE SPACED A MIN. OF 1.5 INCHES.
4. VARIOUS STREETS IN THE CITY CHANGE NAMES AT MAJOR INTERSECTIONS. SIGNS THAT DESIGNATE DIFFERENT NAMES SHALL BE MADE AS PER STANDARD DRAWING NO. T-21.1, PAGE 1.
5. ALL SIGNS SHALL BE APPROVED FOR CONFORMANCE BY THE CITY OPERATION AND MAINTENANCE STAFF PRIOR TO INSTALLATION. TO SCHEDULE AN INSPECTION PLEASE CALL (916) 687-3005.

DATE 6/21/2021		NOT TO SCALE		CITY OF ELK GROVE - PUBLIC WORKS		APPROVED BY: <i>Jeffrey R. Werner</i> 3/12/2024	
REVISION	BY	APPROVED	DATE	<b>TRAFFIC SIGNAL MAST ARM SIGN ASSEMBLY (2 OF 2)</b>		CITY ENGINEER	DATE
01	SJB	SMA	02-23-2024			