

Phone: 916.683.7111  
Fax: 916.691.3168

Web: [www.elkgrovecity.org](http://www.elkgrovecity.org)

8401 Laguna Palms Way  
Elk Grove, California 95758



## Modification or Addition to Improvement Standards and Details

Modification Number: 200811-01  
Effective Date of Change: April 28, 2009  
~~November 11, 2008~~

### Modification:

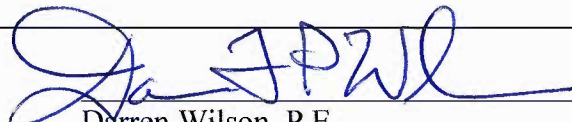
1. Adding new standard drawings for grading/retaining walls, (G-1, G-2, G-3, and G-4).
2. Amending Section 10 in Improvement Standards to reference these new drawings.

Amended specifications are attached. Projects with preconstruction meeting prior to effective date are not subject to modification.

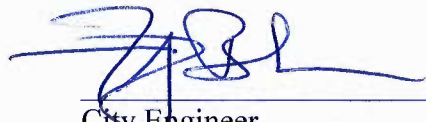
### Effect of Modification:

1. These drawings are additional information as referenced from Section 10-4 to 10-6 of the Improvement Standards and Standard Drawings.

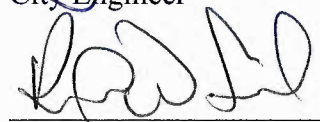
Request for Modification Initiated By:

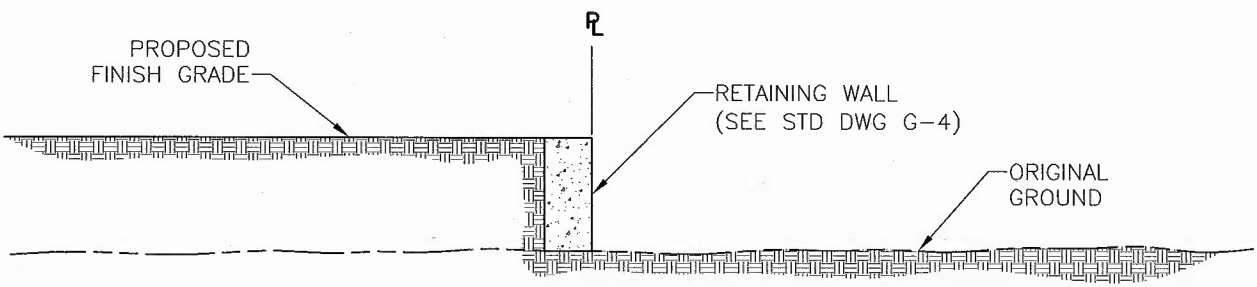
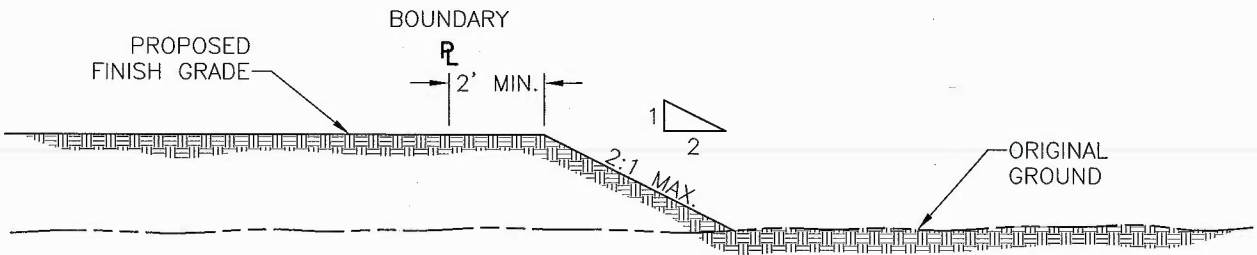
  
Darren Wilson, P.E. 4/28/09  
Date

Modification Reviewed for Conformity and Consistency to Standards:

  
City Engineer 4/28/09  
Date

Modification to Improvement Standards Approved:

  
Director of Public Works 4/30/09  
Date



DATE: 10/27/2008		NOT TO SCALE	
REVISION	BY	APPROVED	DATE


CITY OF ELK GROVE - PUBLIC WORKS

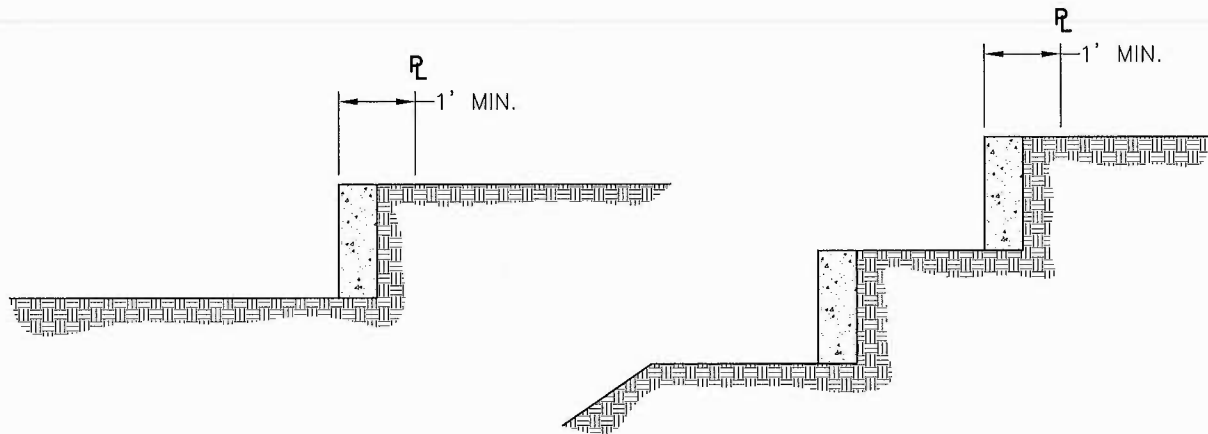
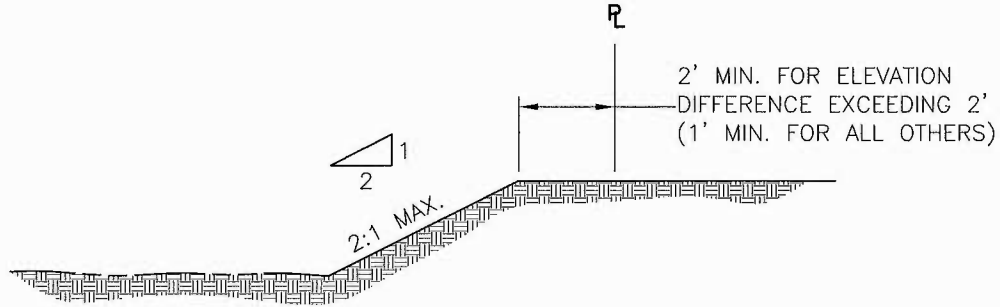
**EXTERIOR PERIMETER  
PROPERTY LINE GRADING FOR  
FILL AREAS**

APPROVED BY: \_\_\_\_\_

CITY ENGINEER

DRAWING NUMBER  
**G - 1**

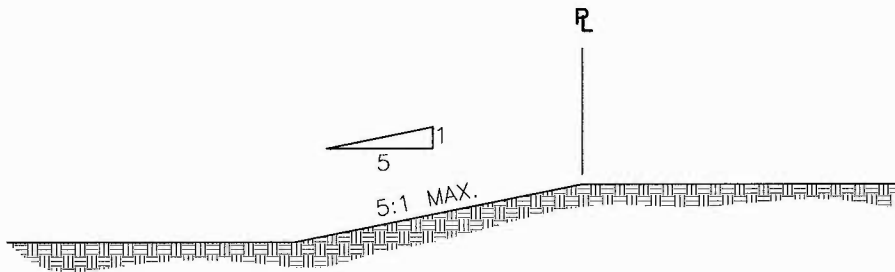




### RETAINING WALL

(SEE STD DWG G-3 AND G-4)

NOTE: NO DOUBLE RETAINING WALLS SHALL BE CONSTRUCTED ON SIDE YARD



DATE: 10/27/2008		NOT TO SCALE	
REVISION	BY	APPROVED	DATE

CITY OF ELK GROVE - PUBLIC WORKS

**GRADING FOR INTERIOR PROPERTY  
LINES AND PERIMETER PROPERTY  
LINES IN CUT AREAS**

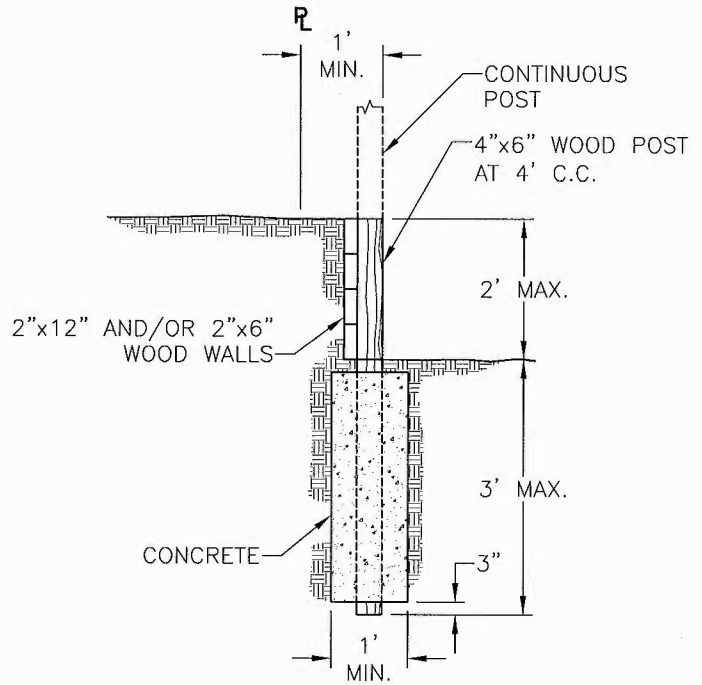
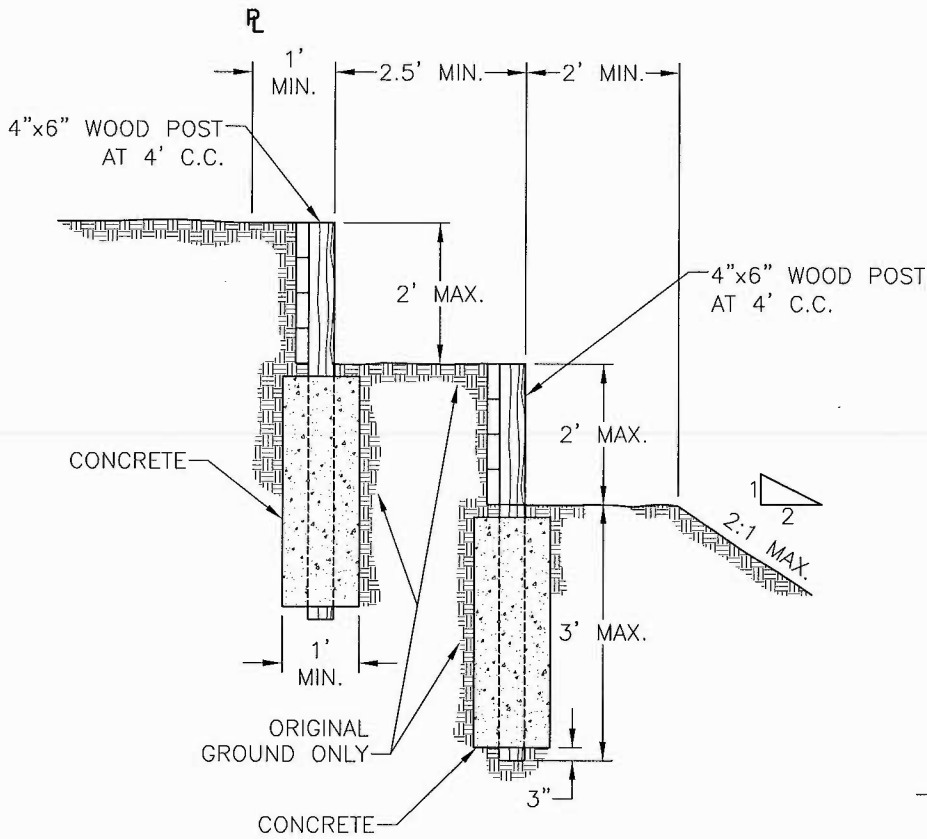
APPROVED BY:

CITY ENGINEER

DRAWING NUMBER



**G - 2**



**NOTES:**

1. MATERIAL FOR WALLS SHALL BE GRADE NO. 2 OR BETTER REDWOOD WITH NO OPEN GRAIN MATERIAL.
2. WOOD WALLS SHALL NOT BE USED ADJACENT TO PUBLIC RIGHTS OF WAY.
3. ALL WALLS WITHIN 8 FEET OF A BOUNDARY OR PROJECT PHASE LINE SHALL BE CONSTRUCTED WITH MASONRY OR CONCRETE.
4. 4-INCH BY 6-INCH POSTS AT 4-FOOT ON CENTER SHALL BE USED AS FENCE POSTS WHEN FENCES ARE ATTACHED TO RETAINING WALLS.
5. NO DOUBLE RETAINING WALLS SHALL BE CONSTRUCTED ON SIDE YARDS.

DATE: 10/27/2008		NOT TO SCALE	
REVISION	BY	APPROVED	DATE

CITY OF ELK GROVE - PUBLIC WORKS

**WOOD RETAINING WALL DETAILS  
FOR INTERIOR PROPERTY LINES**

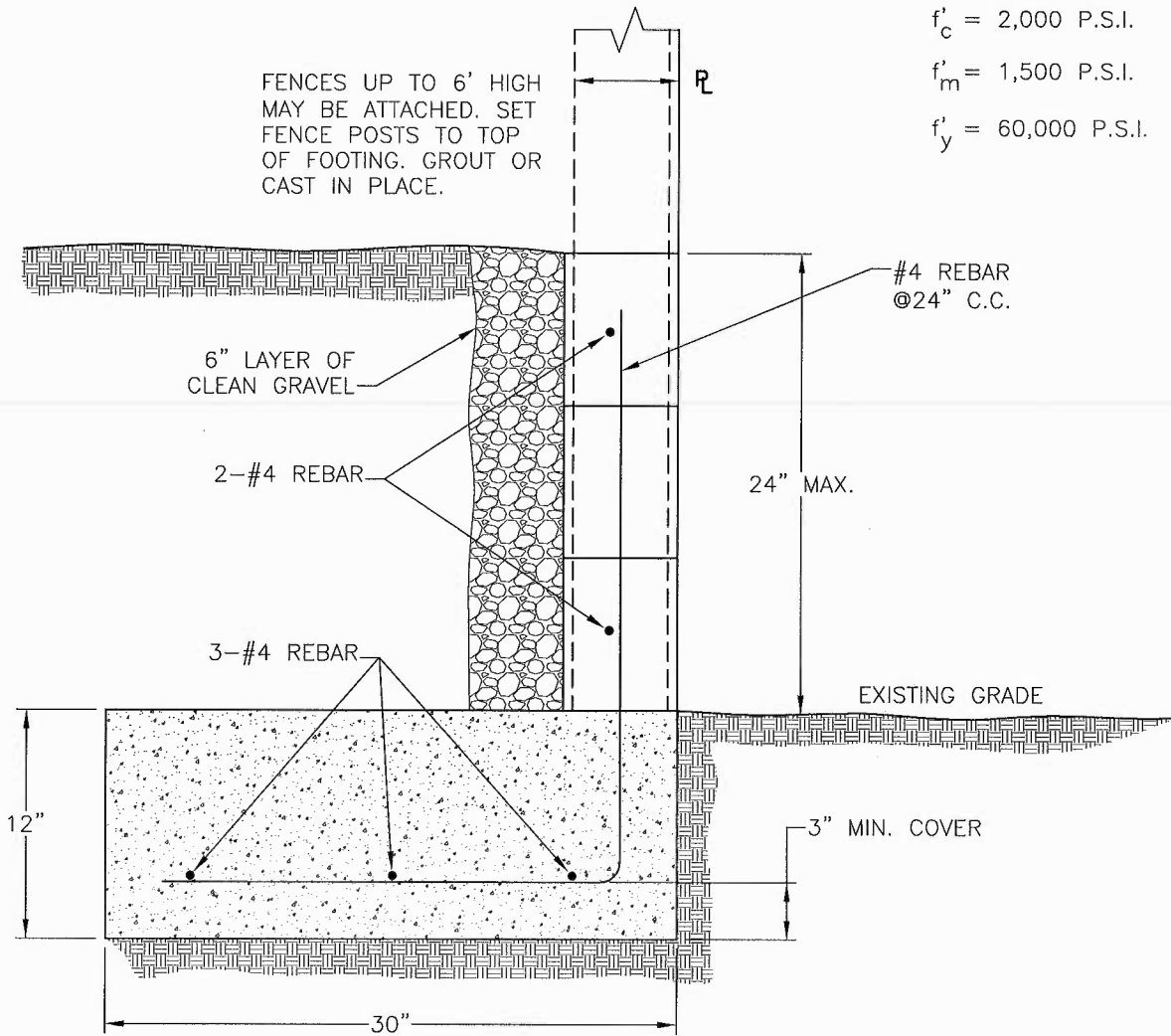
APPROVED BY:

CITY ENGINEER



DRAWING NUMBER

**G - 3**



**NOTES:**

1. 8-INCH NORMAL WEIGHT BLOCK WITH FULL GROUTING REQUIRED.
2. A 6-INCH WIDE CAST-IN-PLACE CONCRETE STEM WALL MAY BE USED IN LIEU OF MASONRY.
3. SPECIAL INSPECTION IS NOT REQUIRED.
4. A BUILDING PERMIT IS REQUIRED FOR WALLS EXCEEDING 24" IN HEIGHT WHEN CONSTRUCTION DETAILS ARE NOT SHOWN ON APPROVED IMPROVEMENT PLANS.

DATE: 11/3/2008		NOT TO SCALE		CITY OF ELK GROVE - PUBLIC WORKS		APPROVED BY:  _____	
REVISION	BY	APPROVED	DATE	<b>MASONRY/CONCRETE RETAINING WALL DETAIL FOR FILL AREAS AT BOUNDARY AND PROJECT PHASE LINES</b>		CITY ENGINEER  DRAWING NUMBER <b>G - 4</b>	