

SITE 1 - VICINITY MAP

STRAWBERRY CREEK WATER QUALITY BASIN

NOTES:

1. CONTRACTOR TO VERIFY EXISTING UTILITIES PRIOR TO COMMENCEMENT OF WORK.
2. CONTACT DESIGN ENGINEER TO DETERMINE EXACT LOCATION OF DRY WELL AND SEDIMENTATION WELL PRIOR TO CONSTRUCTION.
3. STAGING AREA TO BE DETERMINED DURING PRE-CONSTRUCTION MEETING.
4. ACCESS WATER QUALITY BASIN THROUGH DRAINAGE EASEMENT FROM POWER INN ROAD.



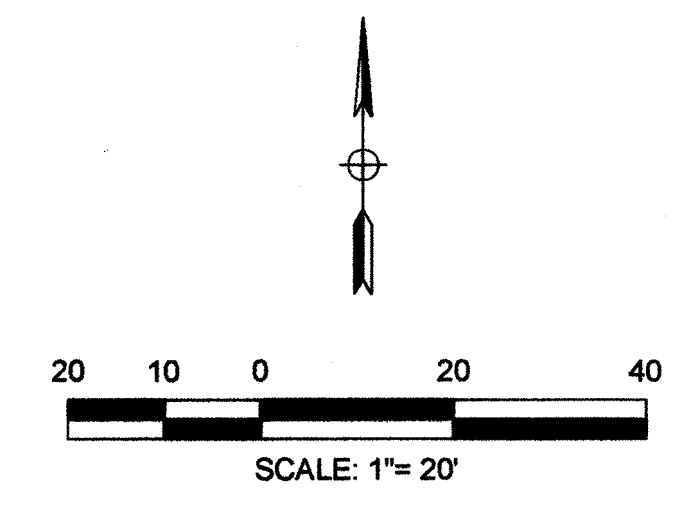
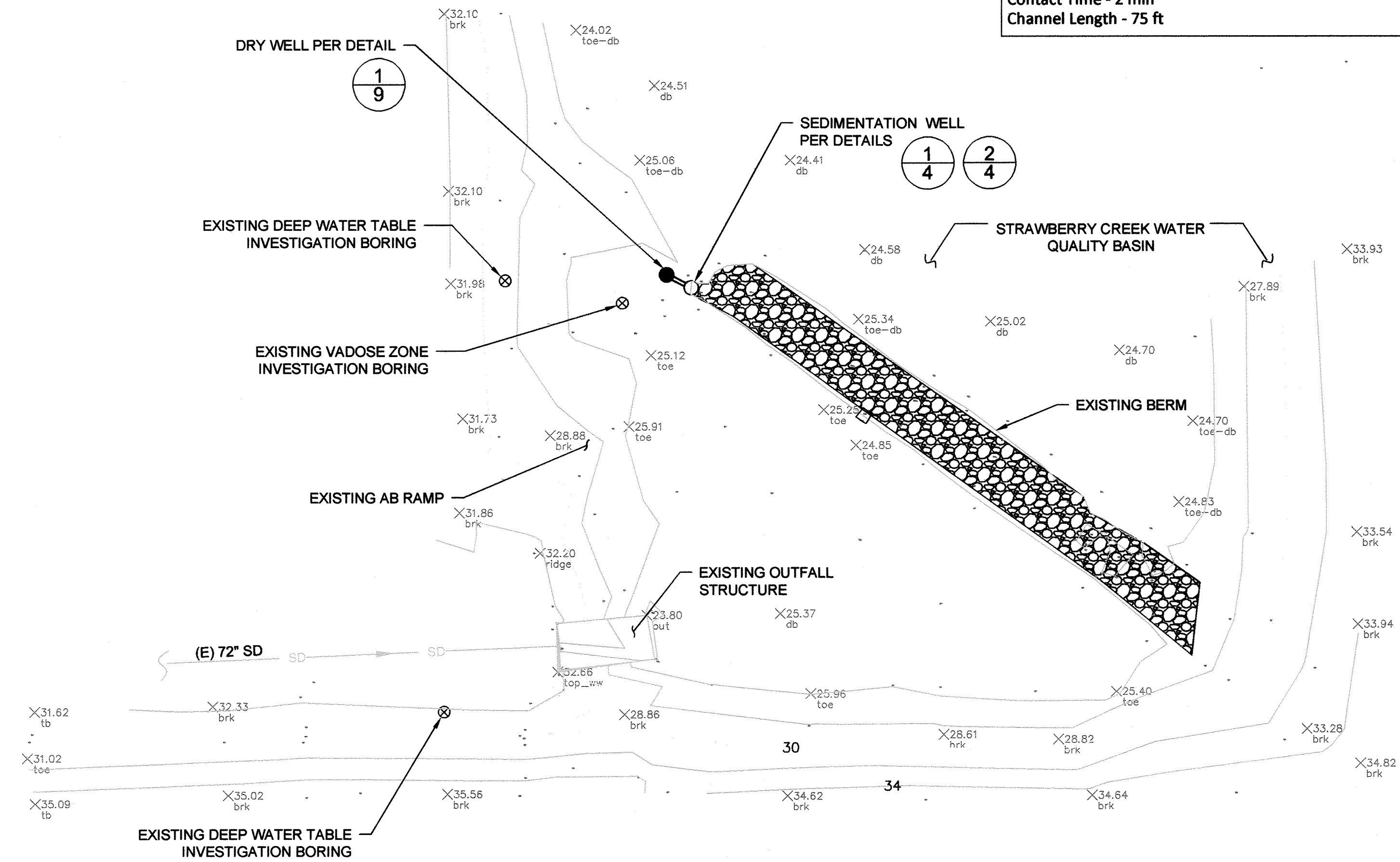
SITE 1 - AERIAL VIEW

STRAWBERRY CREEK WATER QUALITY BASIN

STORMWATER HYDROLOGY INFORMATION

Watershed Size - 168 ac
 Design Flow - 15 cfs
 Peak Flow - 90 cfs
 Average Depth - 1 ft
 Peak Flow Depth - 2 ft
 Average Velocity - 0.7 fps
 Peak Velocity - 2 fps
 Contact Time - 2 min
 Channel Length - 75 ft

EXISTING UPGRADIENT DEEP WATER TABLE INVESTIGATION BORING



SITE 1 - LAYOUT PLAN

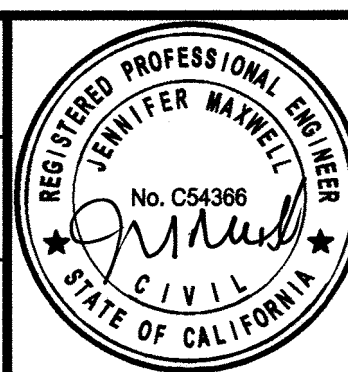
STRAWBERRY CREEK WATER QUALITY BASIN

Xrefs: Strow Base Exploded Images: 10SFH390555.tif
 Willdan\ElkGrove_Aurora\Projects\Active Projects\WDR019_Dry Well\Low Impact\Development.dwg Layer: 03 Site_1 (tab) 05/20/2014 10:59 AM

NO.	REVISION	BY	DATE

WILLDAN
 Engineering
 9281 Office Park Circle ~ Suite 100
 Elk Grove, CA 95758 916.478.6002

DESIGNED: ..
 DRAWN: ..
 CHECKED: ..



CITY OF ELK GROVE
 DEPARTMENT OF PUBLIC WORKS
 8401 LAGUNA PALMS WAY
 ELK GROVE, CALIFORNIA 95758
 916.683.7111



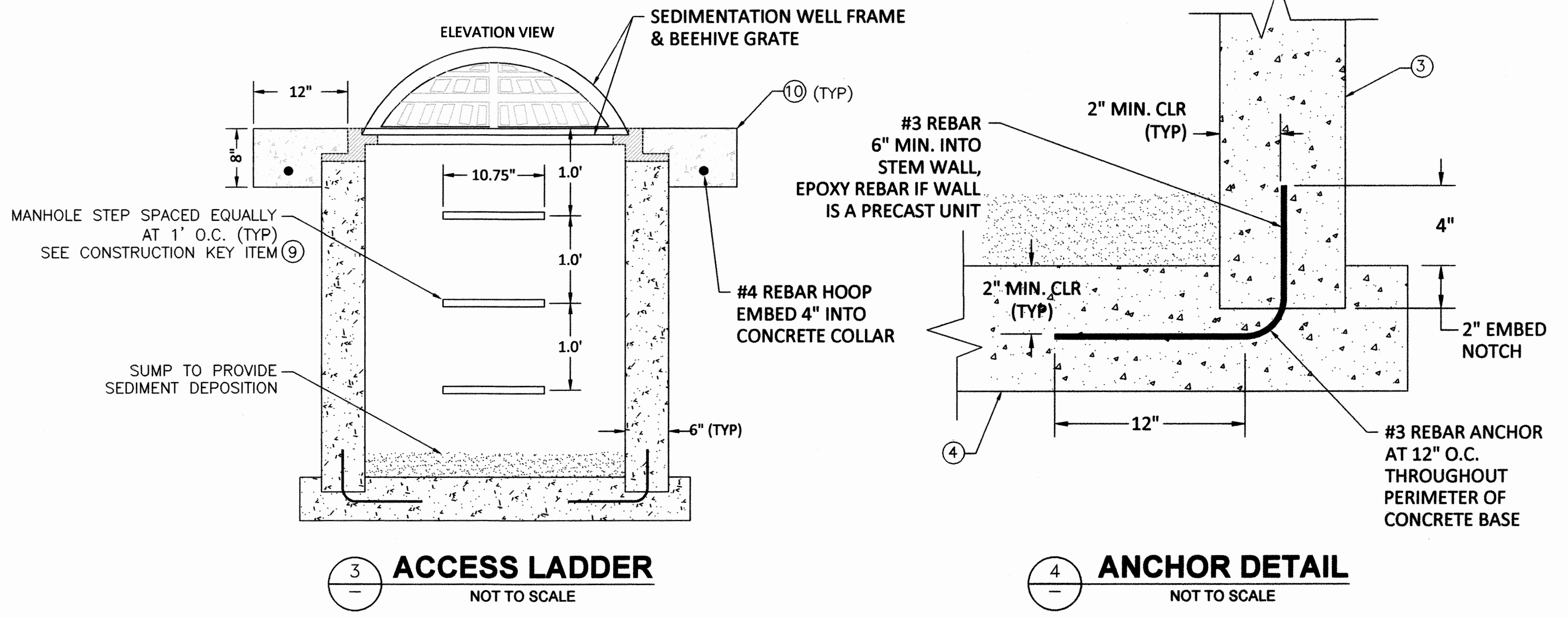
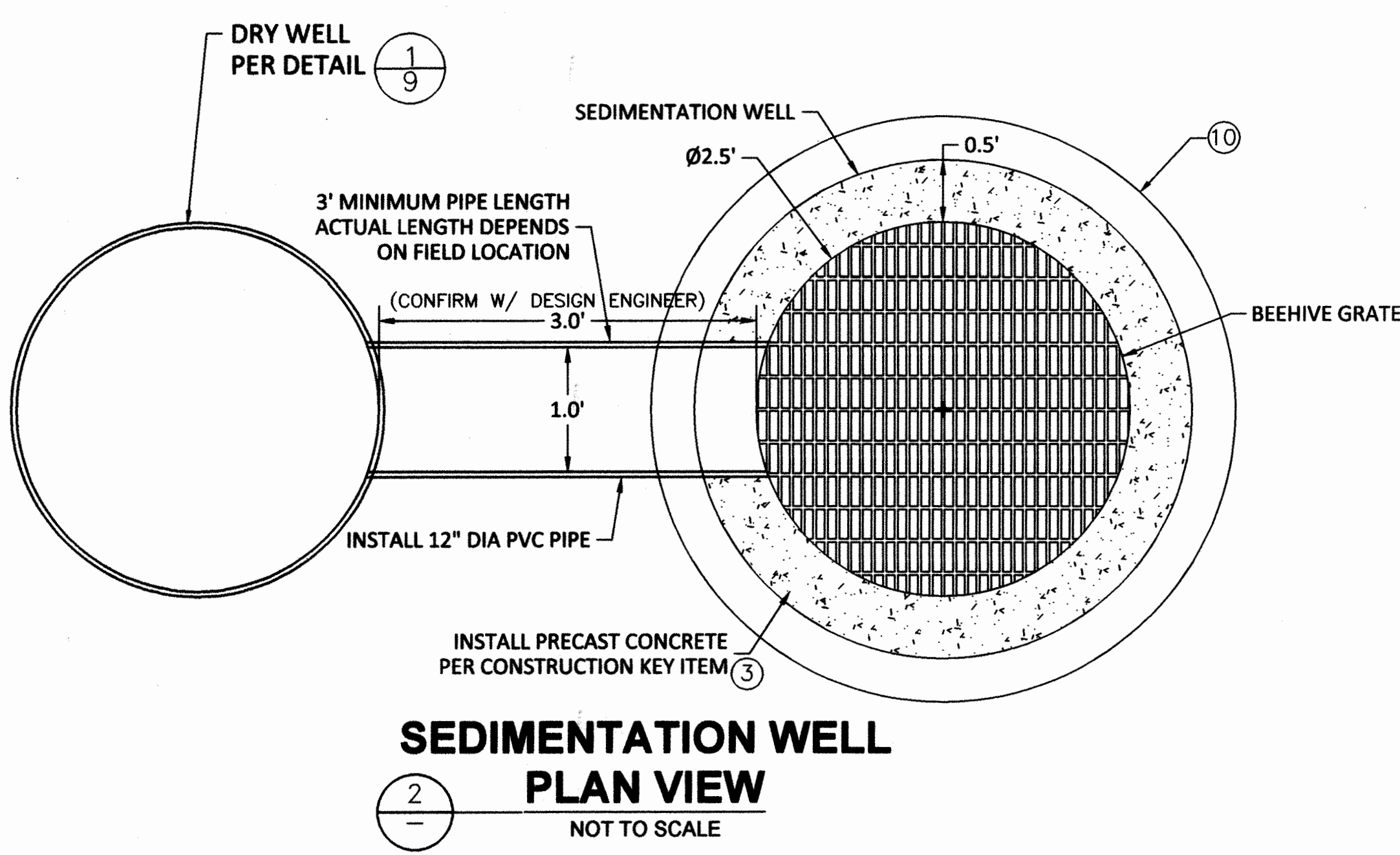
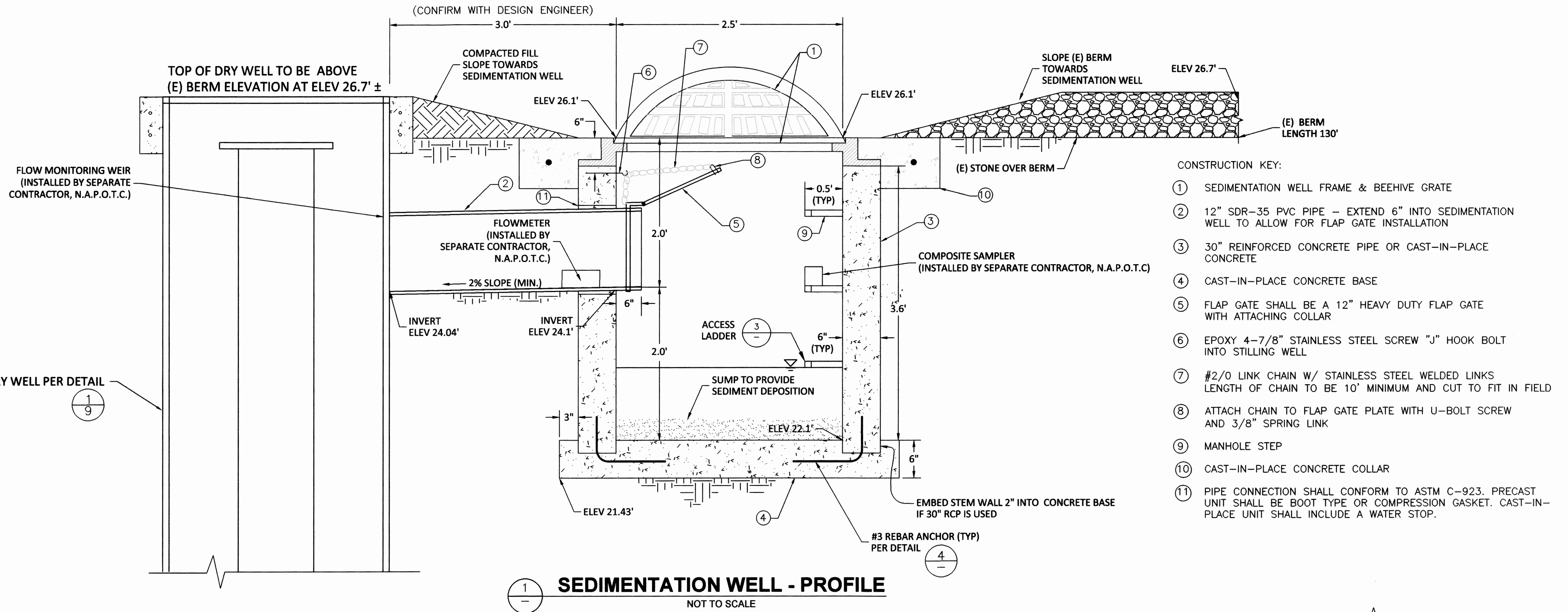
DRY WELLS AS LOW IMPACT DEVELOPMENT
IMPROVEMENTS PROJECT
SITE 1: STRAWBERRY CREEK WATER QUALITY BASIN
VICINITY MAP, AERIAL VIEW & SITE LAYOUT PLAN

DATE: JUNE 2014
 SCALE: HORIZ: 1"= 20'
 VERT: N/A
 PROJECT No.: WDR019

SHEET: **3**
 OF **9**

FOR REDUCED PLANS ORIGINAL SCALE IS IN INCHES

WDR019 - UNDERGROUND INJECTION CONTROLS AS LOW IMPACT DEVELOPMENT



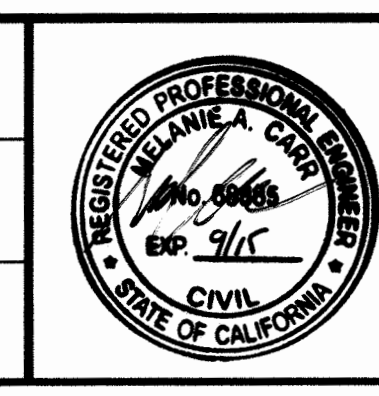
Xref: \\elk-mat\ElkGrove\Autodesk\Projects\Waters\Projects\WDR019_Dry Well Low Impact\WDR019_Sheet_4_cbec-STRAW.dwg Layout_Sheet_4.dwg 10/29/2014 10:59 AM

NO.	REVISION	BY	DATE

cbec
eco engineering

cbec, inc. eco engineering
2544 Industrial Blvd.
West Sacramento, CA 95691

DESIGNED: .
DRAWN: .
CHECKED: .



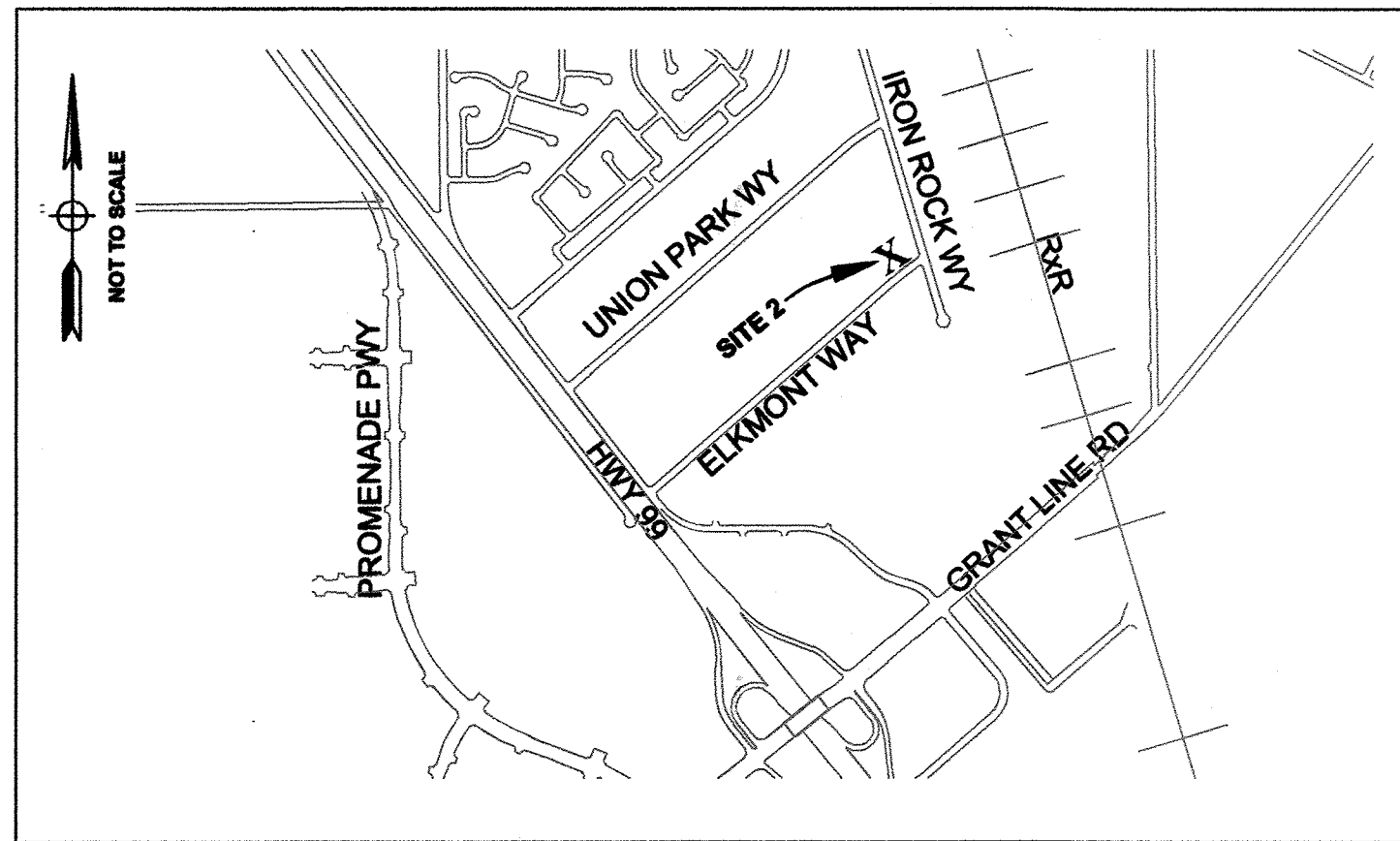
CITY OF ELK GROVE
DEPARTMENT OF PUBLIC WORKS
8401 LAGUNA PALMS WAY
ELK GROVE, CALIFORNIA 95758
916.683.7111

DRY WELLS AS LOW IMPACT DEVELOPMENT IMPROVEMENTS PROJECT
SITE 1: STRAWBERRY CREEK WATER QUALITY BASIN
SURFACE FLOW & WATER QUALITY PLAN, ELEVATION & DETAILS

DATE: JUNE 2014
SCALE: HORIZ: N/A VERT: N/A
PROJECT No.: WDR019

SHEET: **4** OF **9**

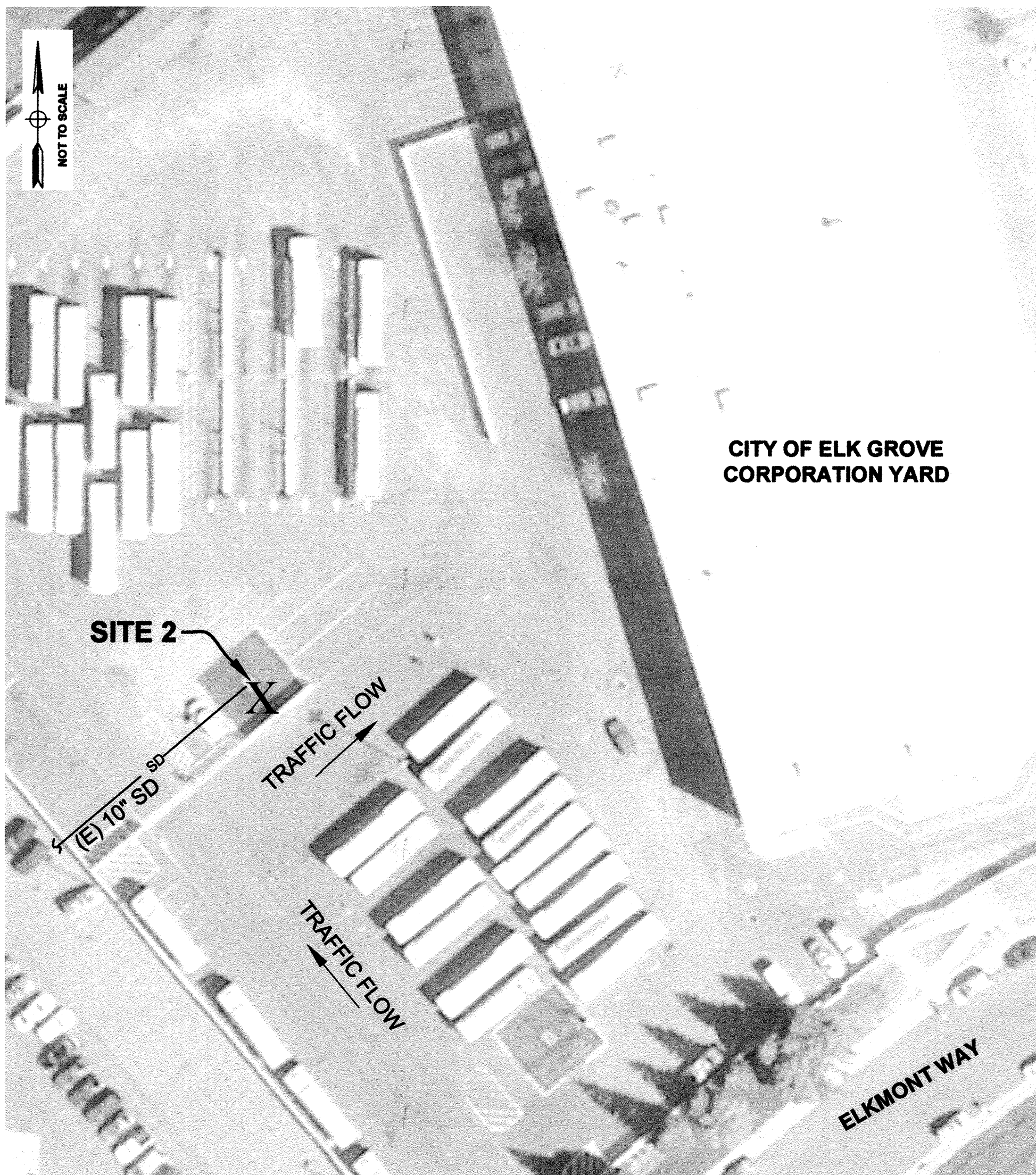
FOR REDUCED PLANS ORIGINAL SCALE IS IN INCHES



SITE 2 - VICINITY MAP

10250 IRON ROCK WAY

- NOTES:**
1. CONTRACTOR TO VERIFY EXISTING UTILITIES PRIOR TO COMMENCEMENT OF WORK.
 2. CONTACT DESIGN ENGINEER TO DETERMINE EXACT LOCATION OF DRY WELL AND SEDIMENTATION WELL PRIOR TO CONSTRUCTION.
 3. PROTECT EXISTING IRRIGATION SYSTEM IN PLACE.
 4. STAGING AREA & WORK ZONE TO BE DETERMINED DURING PRE-CONSTRUCTION MEETING.

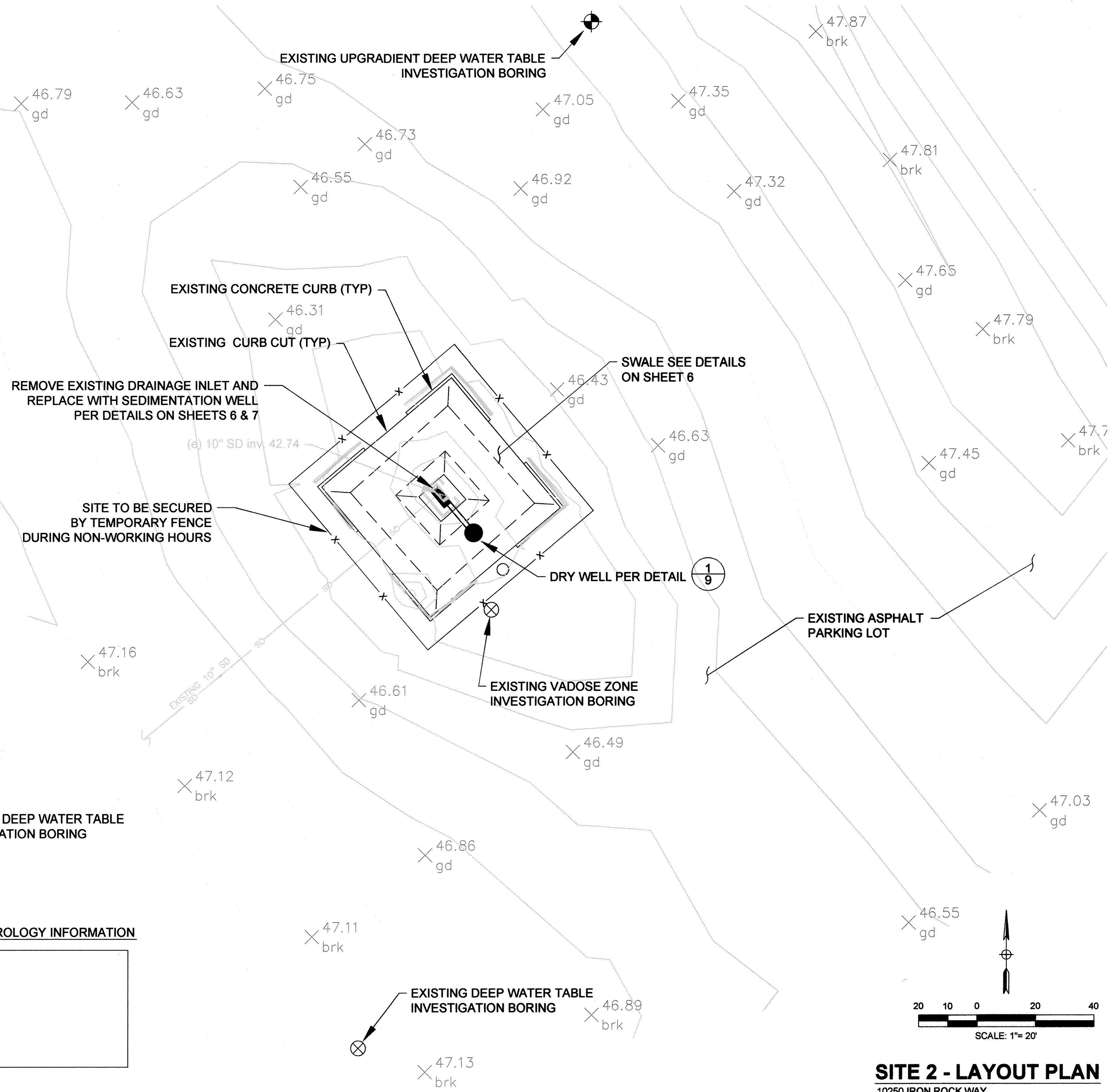


SITE 2 - AERIAL VIEW

10250 IRON ROCK WAY

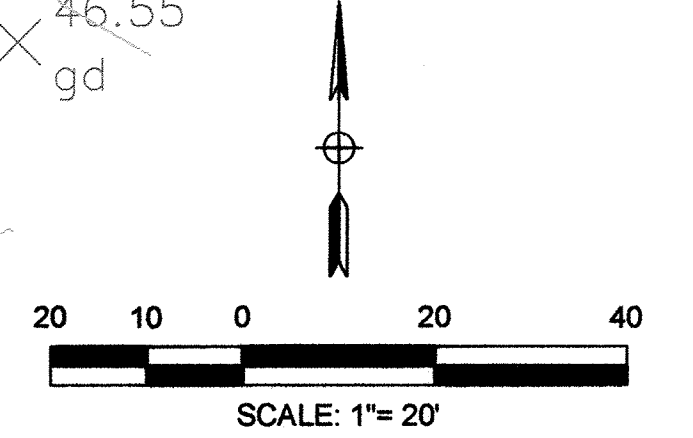
STORMWATER HYDROLOGY INFORMATION

Watershed Size - 0.64 ac
 Design Flow - 0.1 cfs
 Peak Flow - 0.5 cfs
 Average Depth - 1.5 in
 Peak Flow Depth - 2 in
 Average Velocity - 0.17 fps
 Peak Velocity - 0.5 fps
 Contact Time - 6.4 min
 Channel Length - 64 ft



SITE 2 - LAYOUT PLAN

10250 IRON ROCK WAY

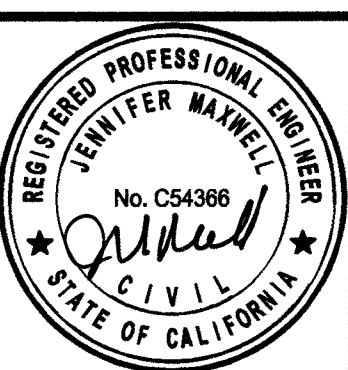


Xrefs: cbec - CORP2 Images: 105FH420495.tif \\alk-mat\ElkGrove\Autobid\Projects\Awards\Project\EG\Project\Active\Projects\WDR019_Dry Well Low Impact\WDR019_Dry Well as Low Impact Development.dwg Layout: 05 SITE 2 (kmarwell) (2/2/2014 11:00 AM)

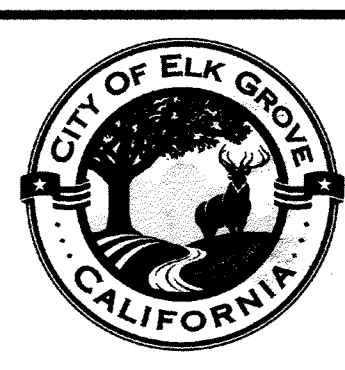
NO.	REVISION	BY	DATE

WILLDAN Engineering
 9281 Office Park Circle ~ Suite 100
 Elk Grove, CA 95758 916.478.6002

DESIGNED: .
 DRAWN: .
 CHECKED: .



CITY OF ELK GROVE
 DEPARTMENT OF PUBLIC WORKS
 8401 LAGUNA PALMS WAY
 ELK GROVE, CALIFORNIA 95758
 916.683.7111

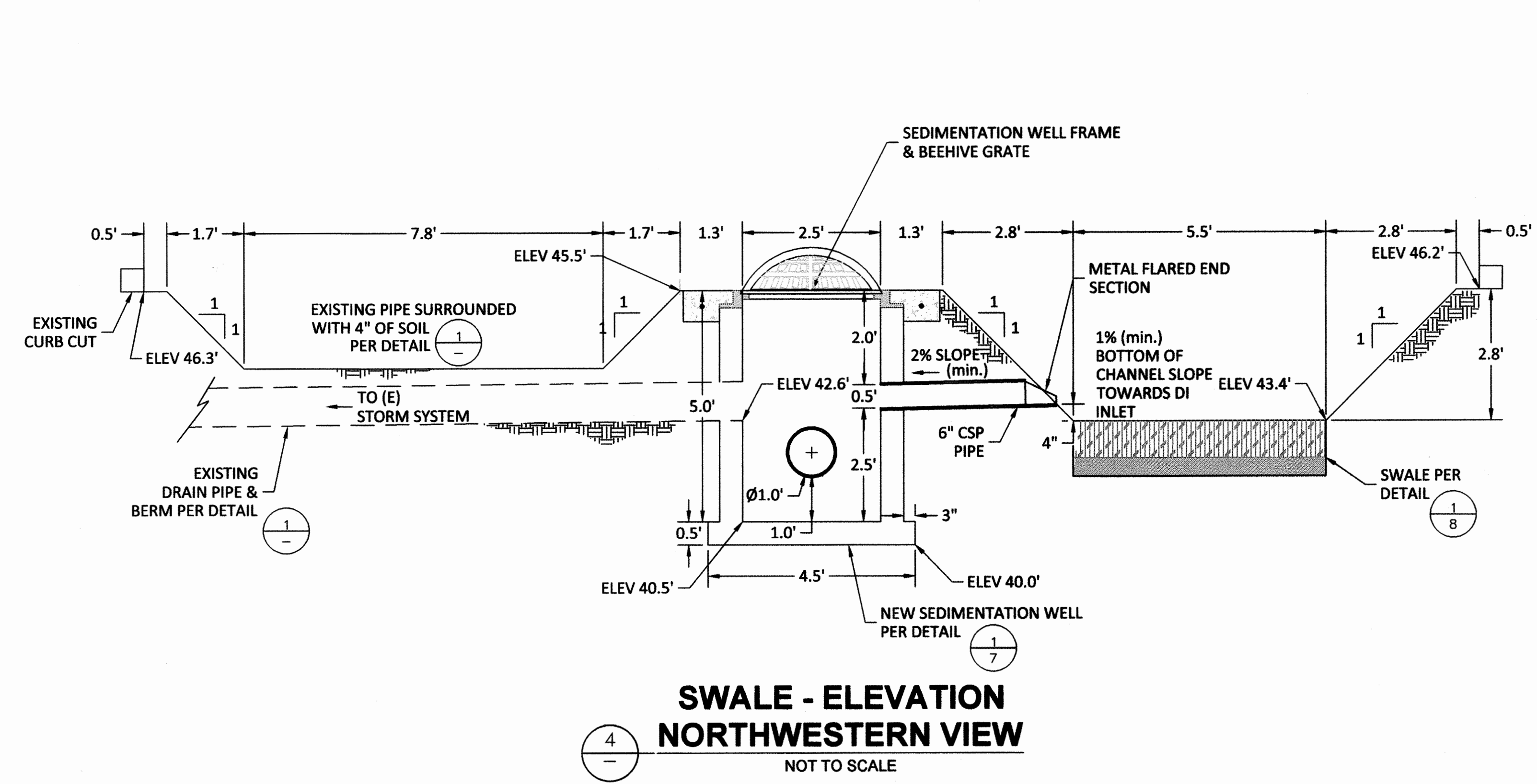
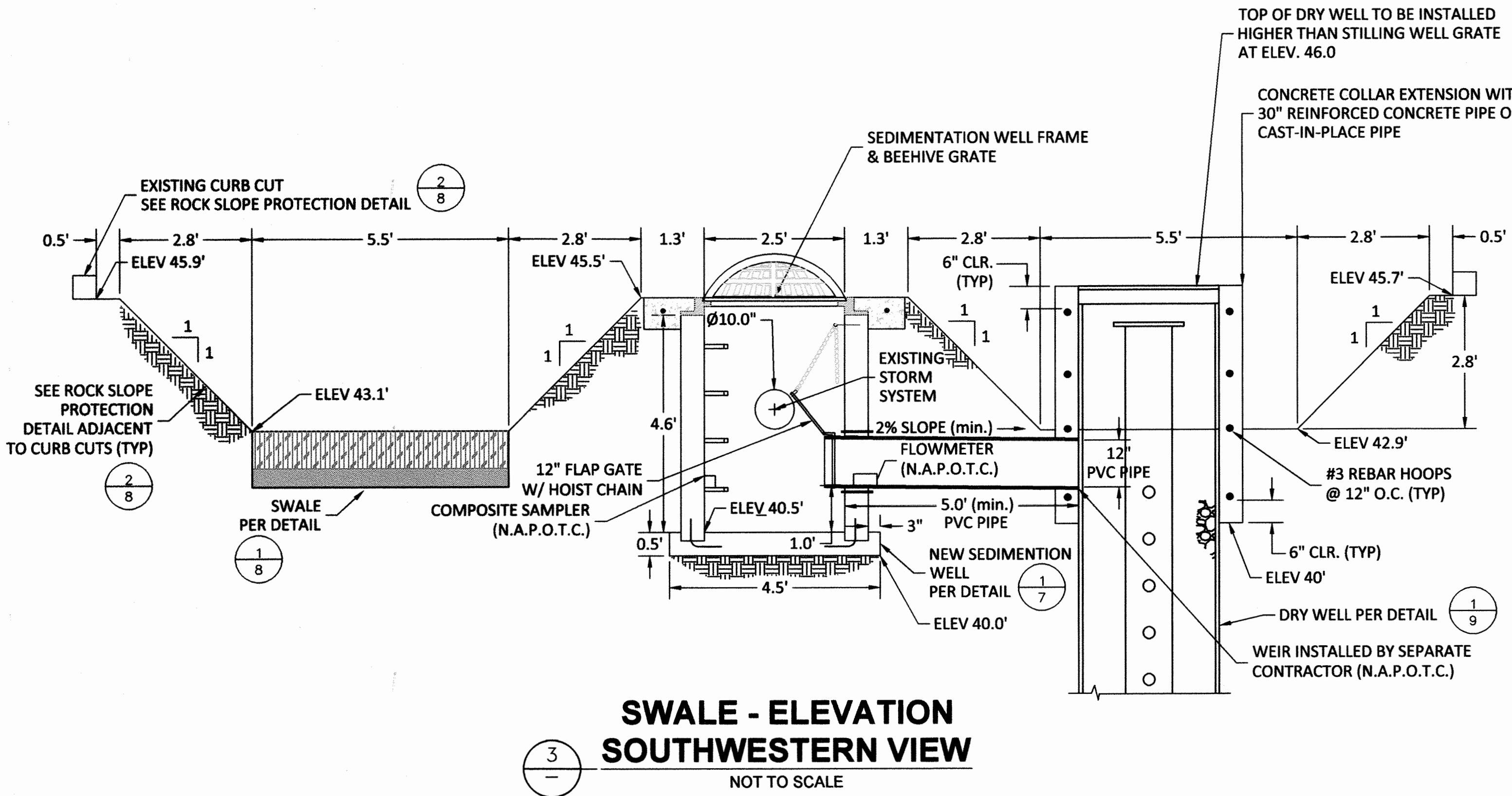
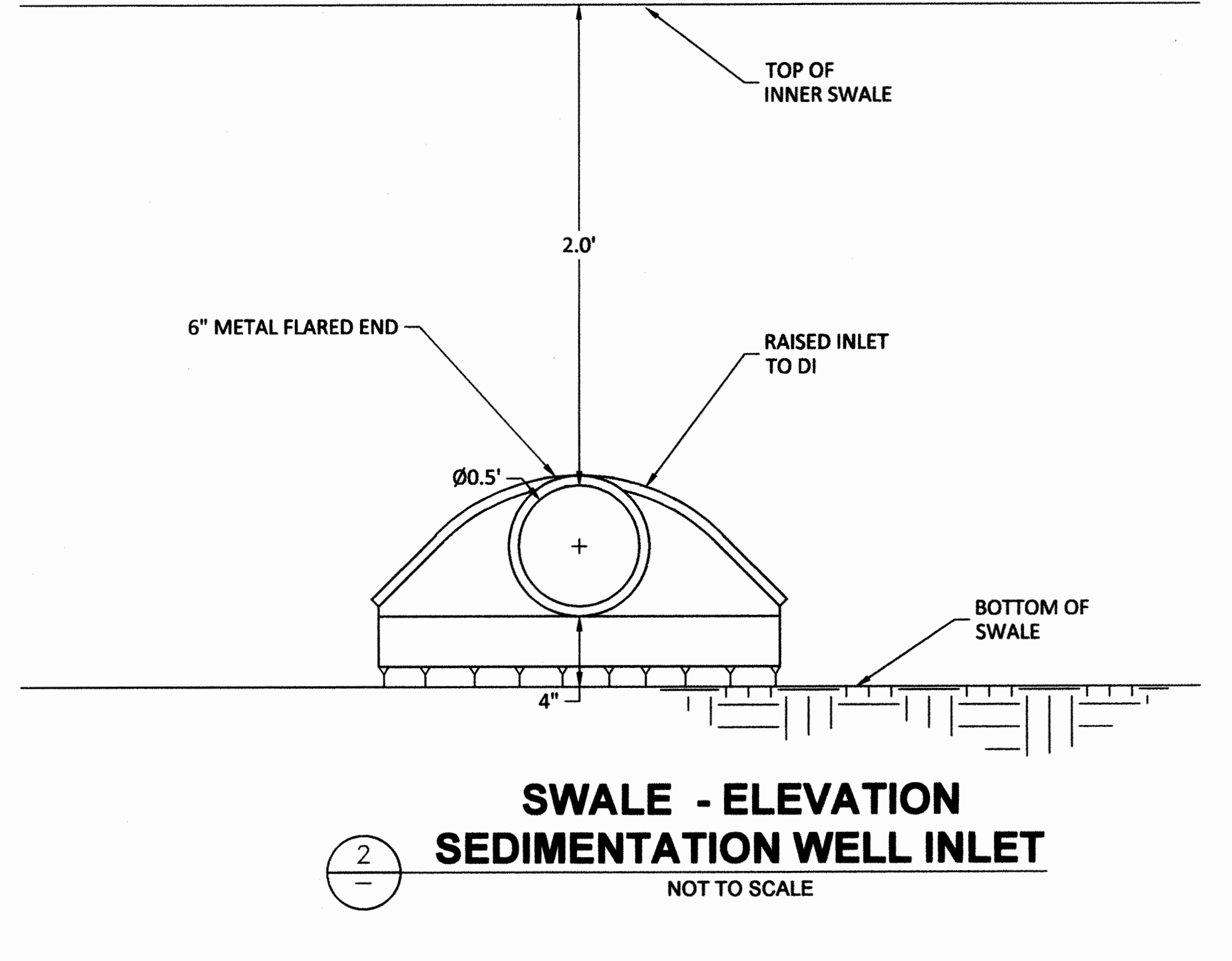
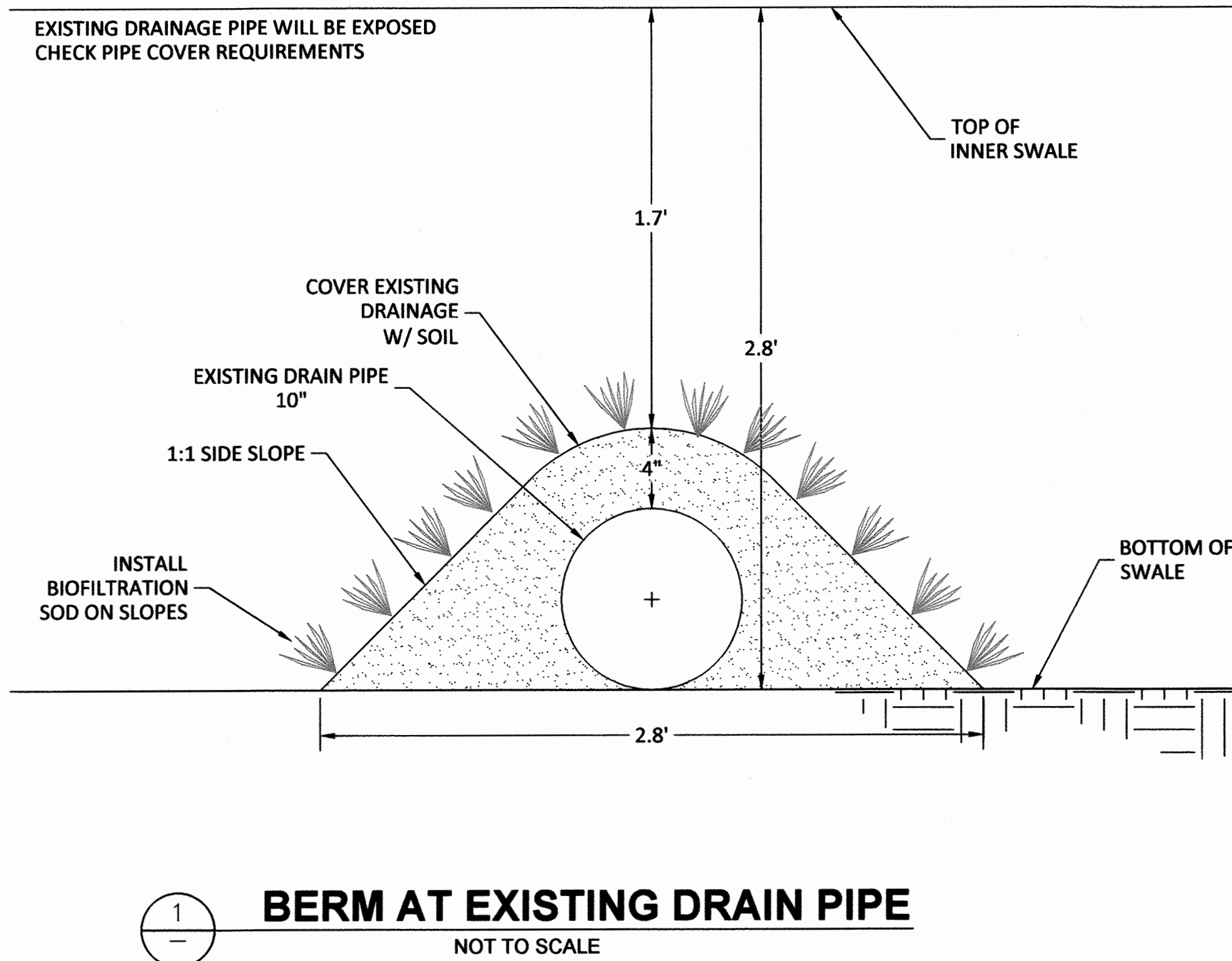
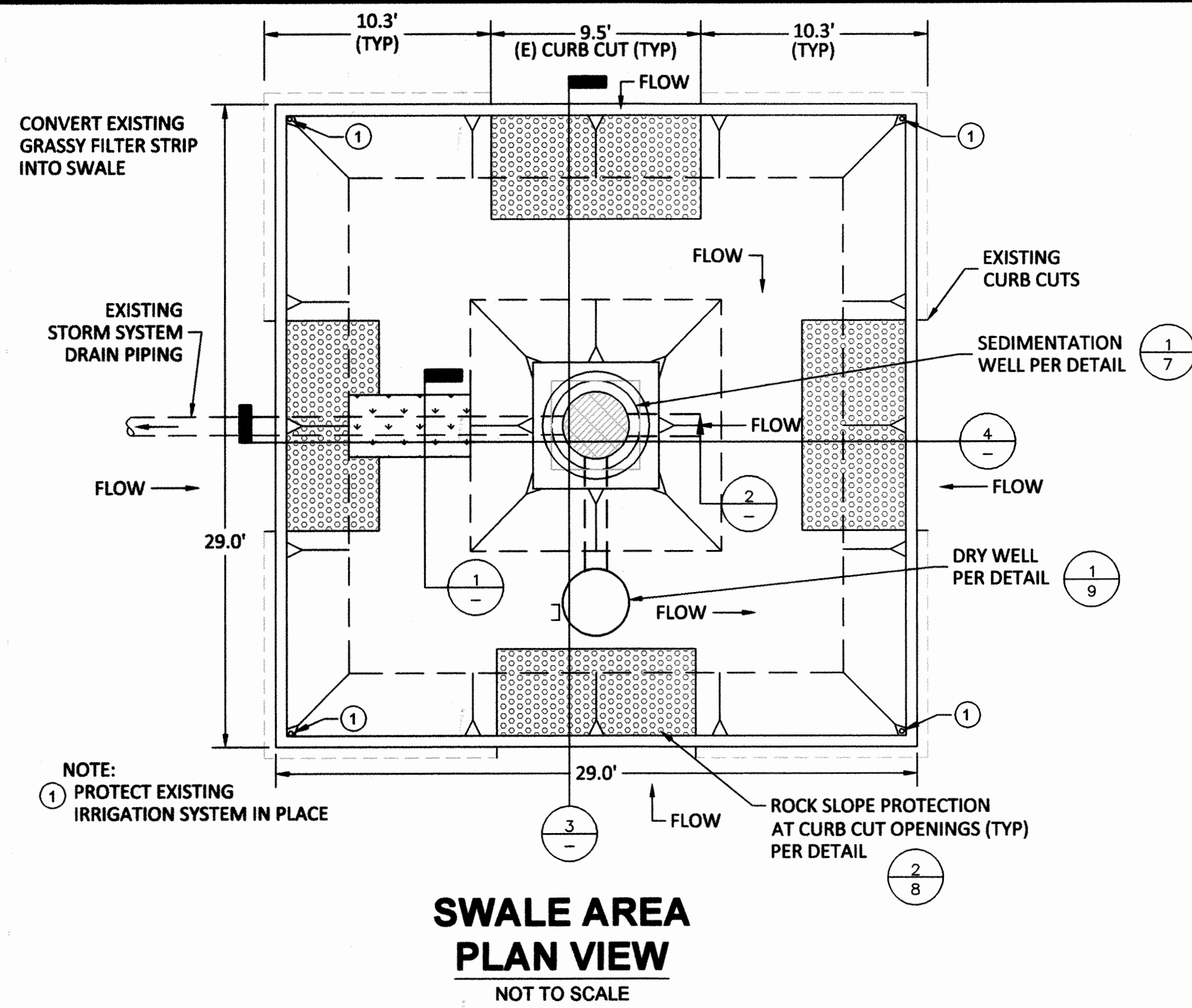


DRY WELLS AS LOW IMPACT DEVELOPMENT IMPROVEMENTS PROJECT
SITE 2: CITY OF ELK GROVE CORPORATION YARD VICINITY MAP, AERIAL VIEW & SITE LAYOUT PLAN

DATE: JUNE 2014
 SCALE: HORIZ: 1"=20'
 VERT: N/A
 PROJECT No.: WDR019

SHEET: **5** OF **9**

FOR REDUCED PLANS ORIGINAL SCALE IS IN INCHES



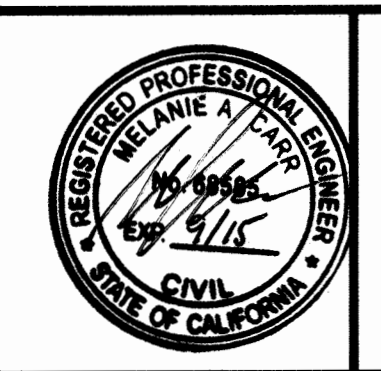
Xrefs: \\elk-nael\elk\Drawings\Projects\WDR019_Dry Well Low Impact\WDR019_Sheet 6 and 7.dwg - CORP.dwg (Layout) Sheet 6 1/2/2014 11:00 AM

NO.	REVISION	BY	DATE

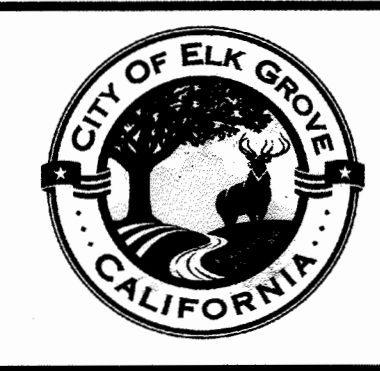
cbec
eco engineering

cbec, inc. eco engineering
2544 Industrial Blvd
West Sacramento, CA 95691

DESIGNED: _____
DRAWN: _____
CHECKED: _____



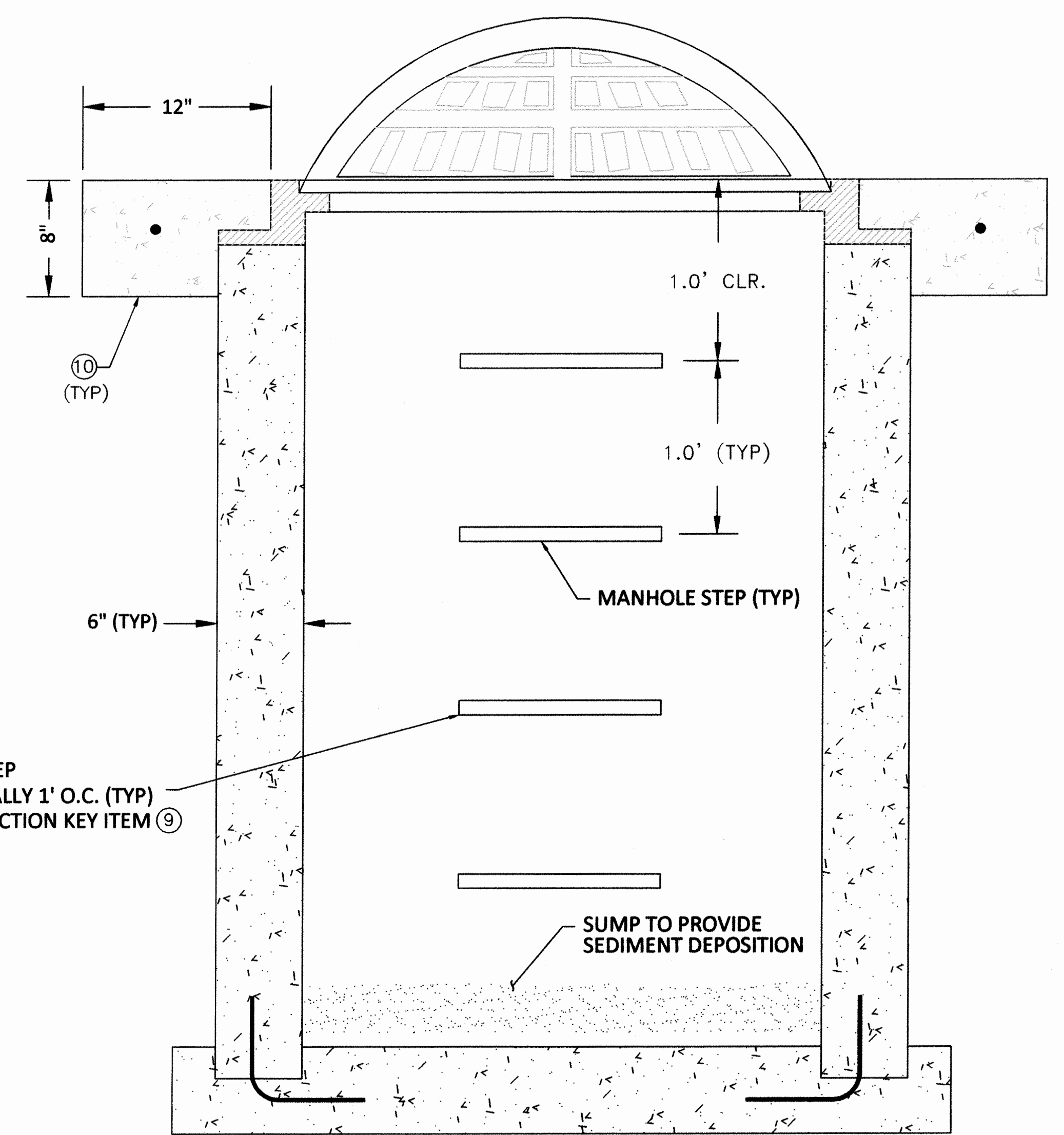
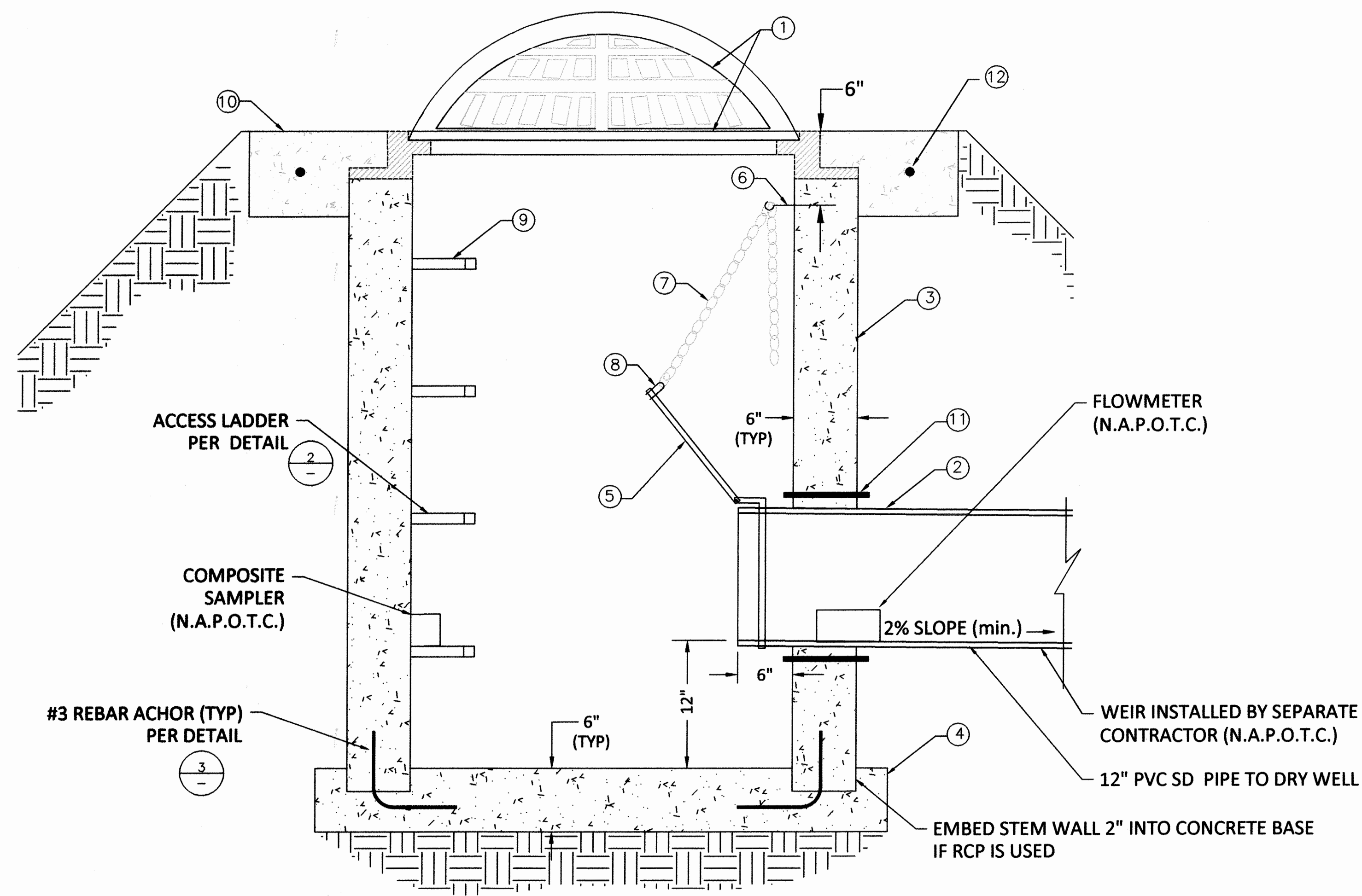
CITY OF ELK GROVE
DEPARTMENT OF PUBLIC WORKS
8401 LAGUNA PALMS WAY
ELK GROVE, CALIFORNIA 95758
916.683.7111



SITE 2: CITY OF ELK GROVE CORPORATION YARD
SURFACE FLOW & WATER QUALITY PLAN, ELEVATION & DETAILS

DATE: JUNE 2014	SHEET: 6 OF 9
SCALE: HORIZ: N/A VERT: N/A	
PROJECT No.: WDR019	

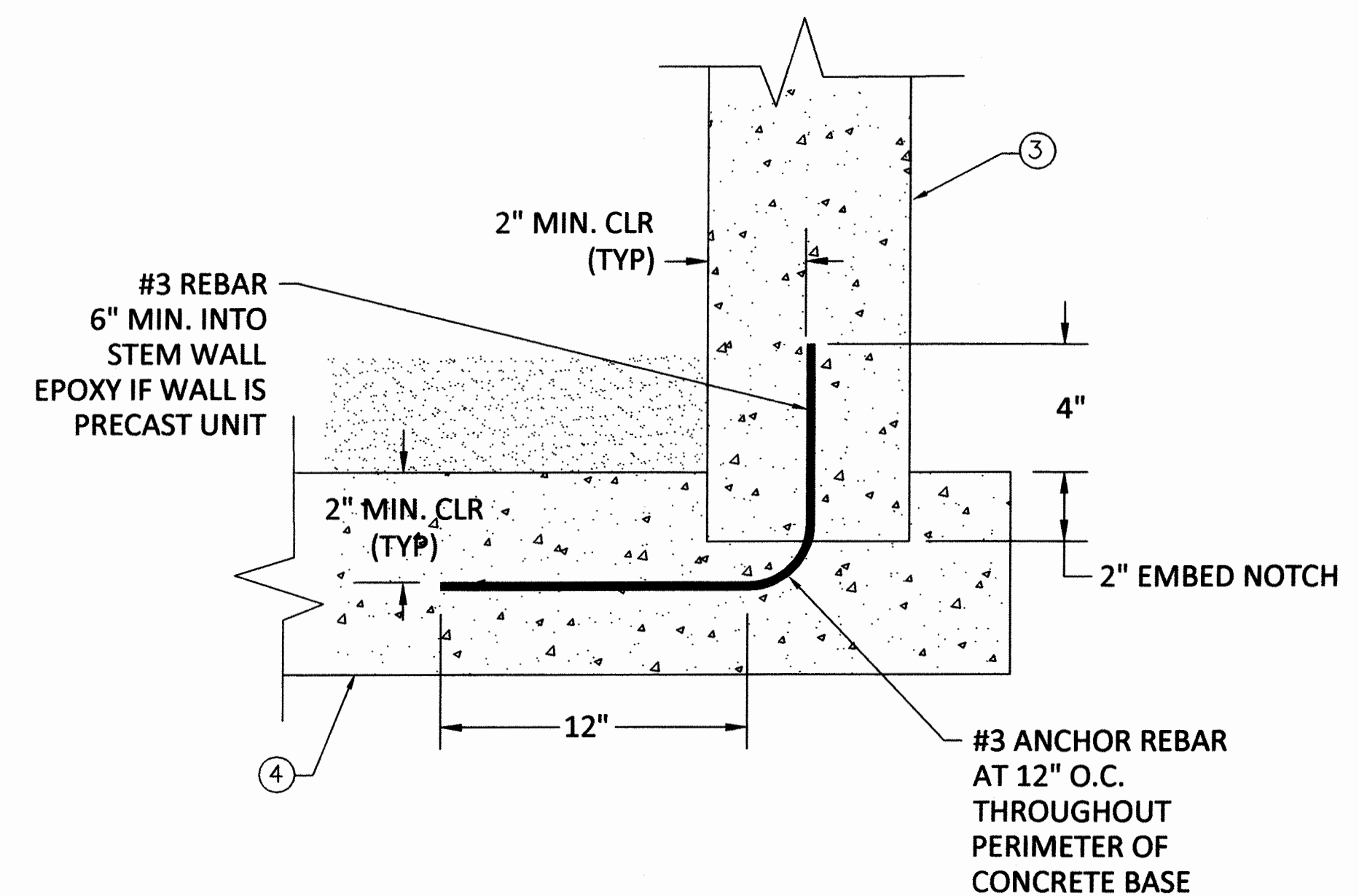
FOR REDUCED PLANS ORIGINAL SCALE IS IN INCHES



1
—
SEDIMENTATION WELL - PROFILE
NOT TO SCALE

CONSTRUCTION KEY:

- ① SEDIMENTATION WELL FRAME & BEEHIVE GRATE
- ② 12" PVC PIPE - EXTEND 6" INTO SEDIMENTATION WELL TO ALLOW FOR FLAP GATE INSTALLATION
- ③ 30" REINFORCED CONCRETE PIPE OR CAST-IN-PLACE CONCRETE
- ④ CAST-IN-PLACE CONCRETE BASE
- ⑤ FLAP GATE SHALL BE A 12" HEAVY DUTY FLAP GATE WITH ATTACHING COLLAR
- ⑥ EPOXY 4-7/8" STAINLESS STEEL SCREW "J" HOOK BOLT INTO STILLING WELL
- ⑦ #2/0 LINK CHAIN W/ STAINLESS STEEL WELDED LINKS LENGTH OF CHAIN TO BE 10' MINIMUM AND CUT TO FIT IN FIELD
- ⑧ ATTACH CHAIN TO FLAP GATE PLATE WITH U-BOLT SCREW AND 3/8" SPRING LINK
- ⑨ MANHOLE STEP
- ⑩ CAST-IN-PLACE CONCRETE COLLAR
- ⑪ PIPE CONNECTION SHALL CONFORM TO ASTM C-923. PRECAST UNITS SHALL BE BOOT TYPE OR COMPRESSION GASKET. CAST-IN-PLACE UNITS SHALL INCLUDE A WATER STOP
- ⑫ #4 REBAR HOOP (TYP)



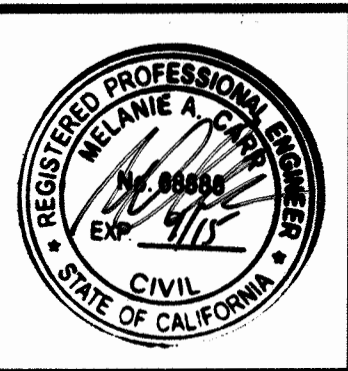
3
—
ANCHOR DETAIL
NOT TO SCALE

2
—
ACCESS LADDER
NOT TO SCALE

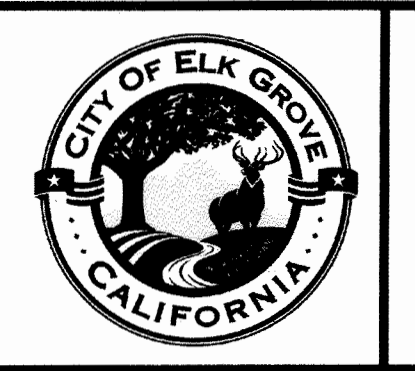
NO.	REVISION	BY	DATE

cbec
eco engineering
cbec, inc. eco engineering
2544 Industrial Blvd.
West Sacramento, CA 95661

DESIGNED:
DRAWN:
CHECKED:



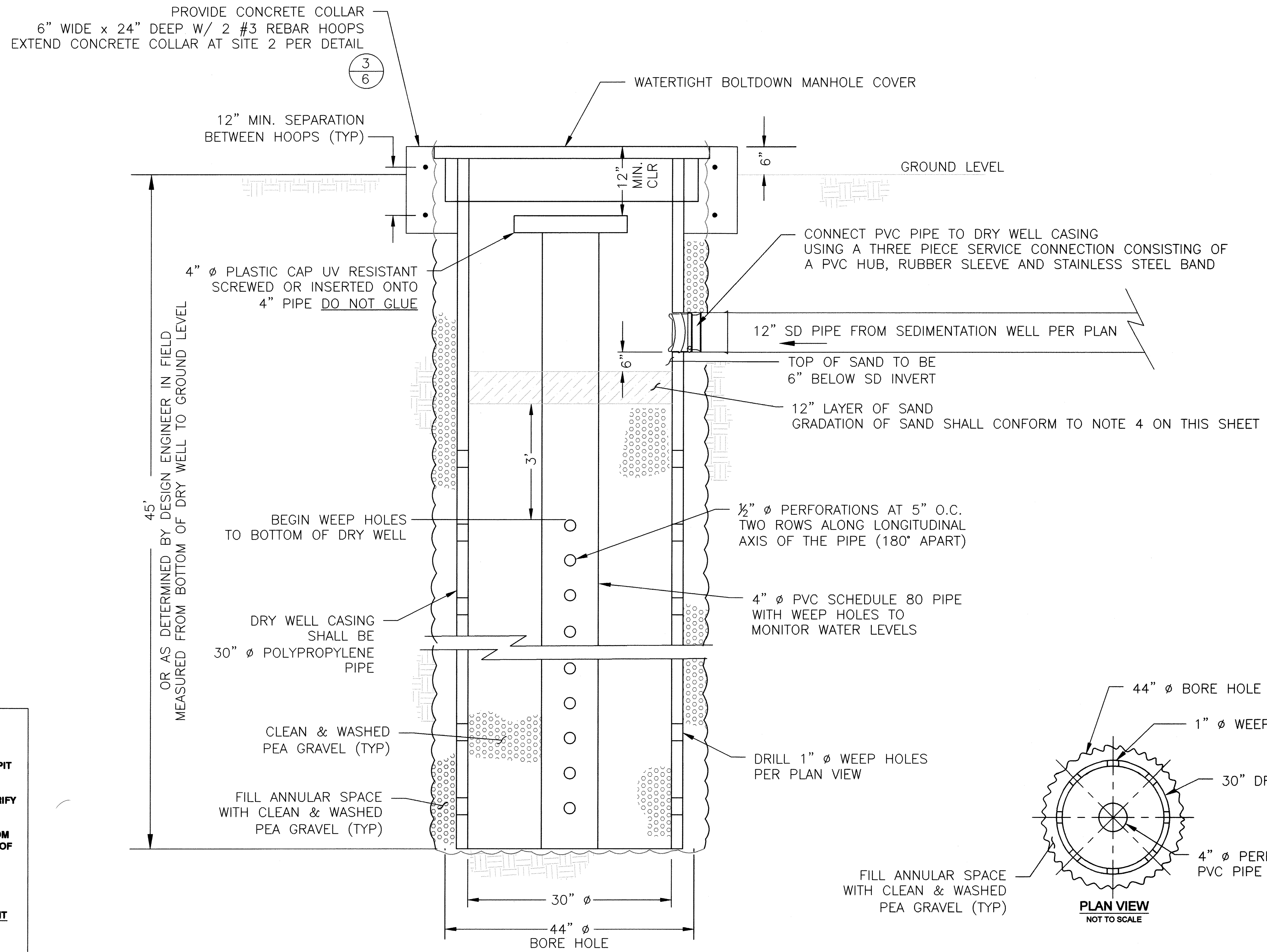
CITY OF ELK GROVE
DEPARTMENT OF PUBLIC WORKS
8401 LAGUNA PALMS WAY
ELK GROVE, CALIFORNIA 95758
916.683.7111



SITE 2: CITY OF ELK GROVE CORPORATION YARD
DRAINAGE INLET DETAIL

DATE:
JUNE 2014
SCALE:
HORIZ: N/A
VERT: N/A
PROJECT No.:
WDR019

SHEET:
7
OF
9



NOTES:

- ROCK MUST COME FROM CLEAN SOURCES AND MUST BE THOROUGHLY WASHED BEFORE PLACEMENT.
- GRAVEL PURCHASED FROM A SUPPLIER MUST BE WASHED AT THE PIT OR PLANT PRIOR TO DELIVERY TO THE DRY WELL SITE.
- BEFORE PLACEMENT OF ROCK CONTACT DESIGN ENGINEER TO VERIFY WASHED ROCK CONDITION.
- DRY WELL SAND SHALL CONSIST OF SILICA SAND AND BE FREE FROM VEGETABLE MATTER, LUMPS, BALLS OF CLAY OR ADHERENT FILMS OF CLAY.

THE PERCENTAGE COMPOSITION BY WEIGHT OF DRY WELL SAND SHALL CONFORM TO THE FOLLOWING GRADATIONS:

SIEVE SIZE	PERCENTAGE PASSING BY WEIGHT
0.1319 INCHES (#8)	90-100
0.0929 INCHES (#20)	4-35
0.0787 INCHES (#10)	0-10

1
-
DRY WELL DETAIL
NOT TO SCALE

NO.	REVISION	BY	DATE

WILLDAN
Engineering

9281 Office Park Circle ~ Suite 100
Elk Grove, CA 95758 916.478.6002

DESIGNED: .
DRAWN: .
CHECKED: .



CITY OF ELK GROVE
DEPARTMENT OF PUBLIC WORKS
8401 LAGUNA PALMS WAY
ELK GROVE, CALIFORNIA 95758
916.683.7111



**DRY WELLS AS LOW IMPACT DEVELOPMENT
IMPROVEMENTS PROJECT**

DRY WELL DETAIL

DATE: JUNE 2014	SHEET: 9 OF 9
SCALE: HORIZ: N/A VERT: N/A	
PROJECT No.: WDR019	