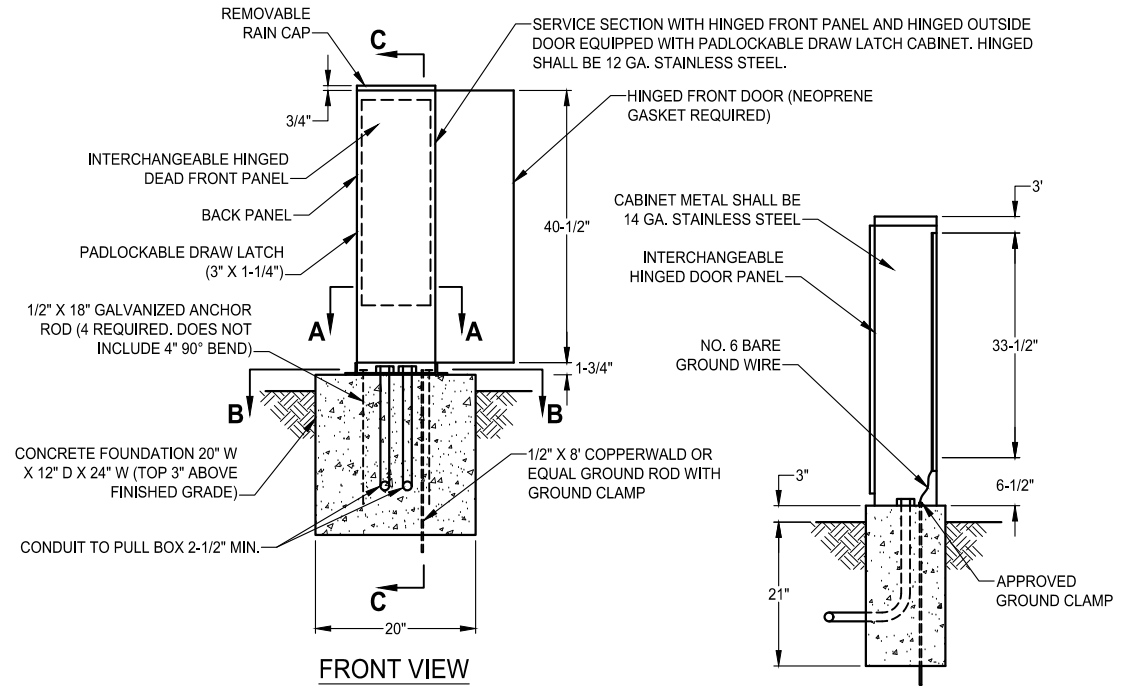
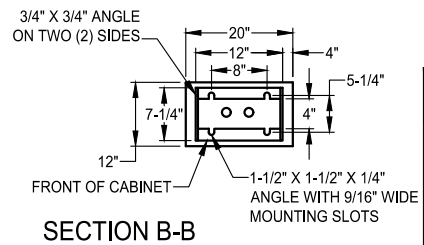
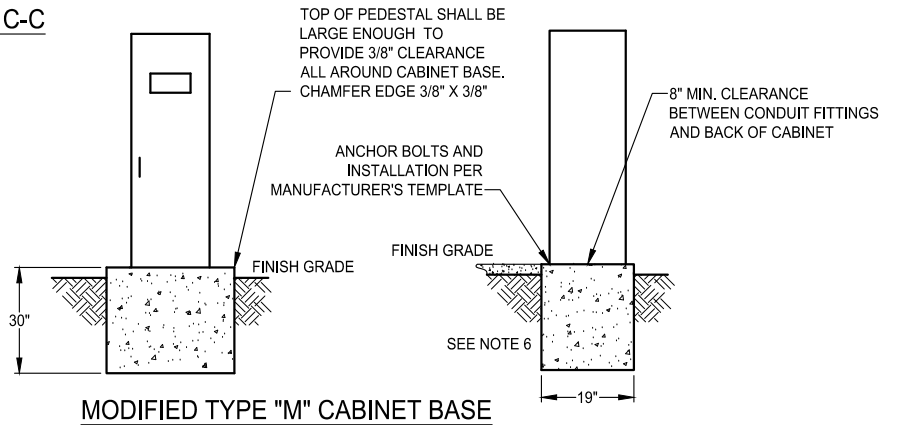
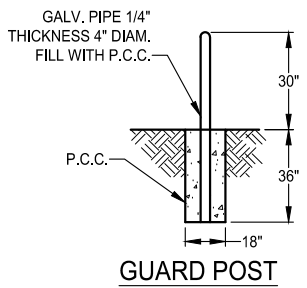
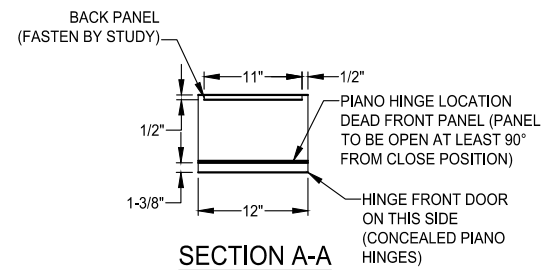


GENERAL INSTALLATION NOTES - ALL CABINETS

1. ALL CABINET DIMENSIONS ARE NOMINAL
2. FOUNDATION SHALL BE LOCATED AS SHOWN ON PLANS. WHERE INSTALLED IN SIDEWALK PLACE AT BACK OF WALK AND PROVIDE 48" MINIMUM CLEARANCE BETWEEN FACE OF CURB AND FRONT OF CABINET.
3. ONE ANCHOR BOLT SHALL BE BONDED TO CONDUIT OR GROUND WIRE.
4. SERVICE CAN, CONTROLLER CABINET, AND TERMINAL CABINET (IF NECESSARY) SHALL BE ON A COMMON FOUNDATION WITH 6" SPACING, UNLESS OTHERWISE DIRECTED BY THE ENGINEER. THE SERVICE CAN SHALL BE TO THE LEFT OF THE CONTROLLER CABINET SO AS TO NOT BE BLOCKED BY CONTROLLER CABINET DOOR WHEN FULLY OPEN.
5. APPROVED WATERPROOF SEAL TO BE APPLIED TO BASE OF CABINETS AND CONCRETE FOUNDATION.
6. IN UNIMPROVED AREAS A RAISED P.C.C. PAD OF 36" X 30" X 4" SHALL BE PLACED IN FRONT OF EACH CABINET.
7. IN ALL UNPAVED AREAS TOP OF FOUNDATION FOR CABINETS SHALL BE 6" ABOVE SURROUNDING GRADE. IN PAVED AREAS TOP OF FOUNDATION SHALL BE 3" ABOVE PAVED AREA.
8. ANCHOR BOLTS, NUTS, AND WASHERS SHALL BE GALVANIZED.
9. ALL CONDUITS SHALL BE BOUNDED TOGETHER IN THE CABINET.
10. LOCATIONS SHOWN FOR EQUIPMENT ARE TYPICAL ONLY.
11. A 1/2" DIAMETER DRAIN HOLE SHALL BE FORMED IN THE CABINET BASE. ALL CABINETS SHALL BE LEVELED SO THAT THE CABINET DOOR WILL OPEN AND CLOSE EASILY.



TRAFFIC SIGNAL INTERCONNECT TERMINAL CABINET OR PEDESTRIAN SIGNAL CONTROLLER CABINET



DATE: 09/22/2007		NOT TO SCALE	
REVISION	BY	APPROVED	DATE

CITY OF ELK GROVE - PUBLIC WORKS

INTERCONNECT TERMINAL CABINET AND PEDESTRIAN SIGNAL CONTROLLER CABINET DETAILS

APPROVED BY: *Robert M. ...* 10/24/2018
 CITY ENGINEER DATE

DRAWING NUMBER
T - 18

