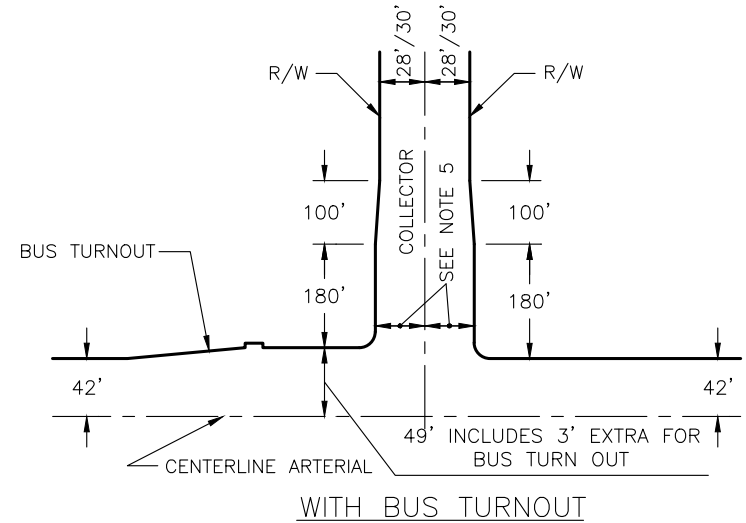
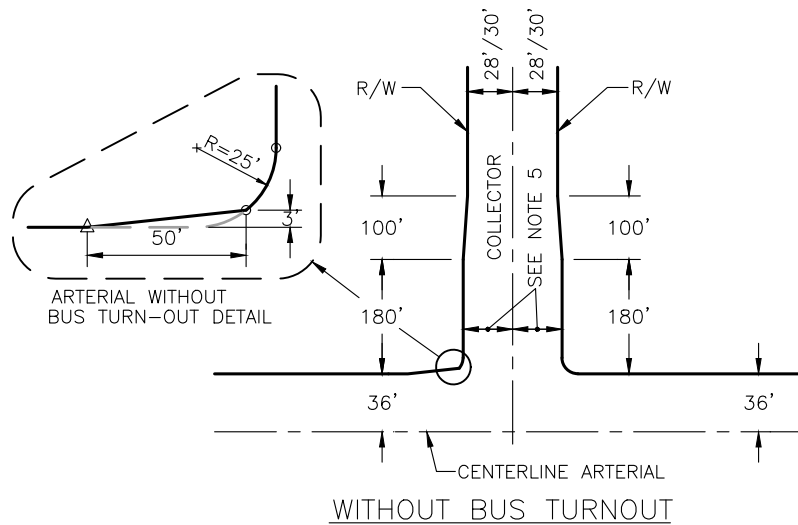


NOTES:

1. RADIUS AT CORNERS IS 25'.
2. FOR BUS TURNOUT DIMENSIONS, SEE STANDARD DRAWING ST-27.
3. PEDESTRIAN EASEMENTS PER STANDARD DRAWINGS ST-27 AND ST-28 ARE REQUIRED.
4. TYPE 2 CURB AND GUTTER SHALL BE REQUIRED WITHIN ALL CURB RETURNS, AND AT ALL BUS TURNOUTS AS SHOWN ON STANDARD DRAWINGS ST-27 AND ST-28.
5. HALF WIDTH OF 56' COLLECTOR STREETS AT APPROACH TO MAJOR STREETS SHALL BE 31' IF STREET DOES NOT HAVE BICYCLE LANES AND 35' IF IT DOES. HALF WIDTH OF 60' COLLECTOR STREETS AT APPROACH TO MAJOR STREETS SHALL BE 33' IF STREET DOES NOT HAVE BICYCLE LANES AND 37' IF IT DOES.
6. SIDEWALK SHALL BE INCLUDED AS PART OF THE RIGHT-OF-WAY WHEN ADJACENT TO THE BACK OF CURB SUCH AS AT INTERSECTIONS AND DRIVEWAYS.



DATE: 09/22/2007		NOT TO SCALE	
REVISION	BY	APPROVED	DATE

CITY OF ELK GROVE - PUBLIC WORKS

**WIDENING DETAILS FOR  
ARTERIALS AT COLLECTOR  
STREET INTERSECTIONS**

APPROVED BY:  
*Robert M. ...*  
CITY ENGINEER

10/24/2018  
DATE

DRAWING NUMBER  
**ST - 12B**

