

DETAIL A

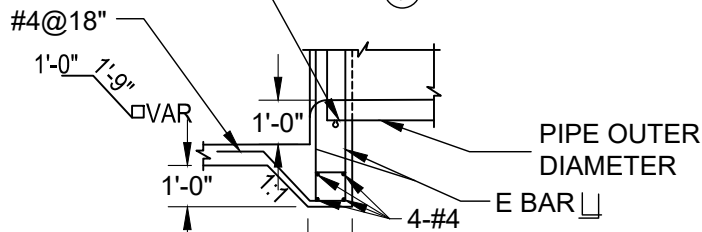
NOTES

- ① PLACE #5 REBAR ON DIAGONALS @ 4" FROM PIPE OD.
- ② PIPE CONNECTIONS SHALL CONFORM TO ASTM C-923. UNITS SHALL INCLUDE A WATER STOP.
- ③ CHAMFER ALL EXPOSED EDGES $\frac{3}{4}$ ".
- ④ ALL STEEL MINIMUM 2" FROM CONCRETE EDGES.
- ⑤ ALL LAP SPLICES MINIMUM 12".

HEADWALL DIMENSIONS

| PIPE DIA | PIPE OD | W | H _{min} | T | L _{min} |
|----------|---------|--------|------------------|-----|------------------|
| 24" | 30" | 4'-6" | 4'-8" | 8" | 2'-9" |
| 27" | 33.5" | 4'-6" | 4'-10" | 8" | 3'-0" |
| 30" | 37" | 4'-6" | 5'-3" | 8" | 3'-3" |
| 33" | 40.5" | 4'-6" | 5'-9" | 8" | 3'-6" |
| 36" | 44" | 5'-6" | 5'-9" | 8" | 3'-9" |
| 42" | 51" | 6'-6" | 6'-6" | 8" | 4'-3" |
| 48" | 58" | 7'-6" | 7'-5" | 10" | 5'-3" |
| 54" | 65" | 9'-6" | 7'-7" | 10" | 5'-9" |
| 60" | 72" | 10'-6" | 8'-3" | 10" | 6'-0" |
| 72" | 86" | 12'-6" | 9'-8" | 10" | 7'-3" |

1/2" EXPANSION JOINT FILLER, WHERE "H" MAX > 10'-0"

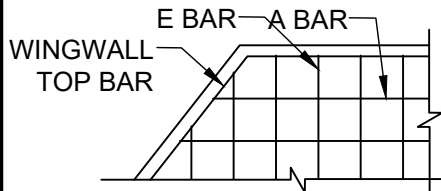


DIM IS 1'-0" WHERE H < 10'
DIM IS 2'-0" WHERE H > 10'

DETAIL B

REINFORCING STEEL DIMENSIONS AND DATA

| | A BAR | B BAR | C BAR | D BAR | E BAR | WINGWALL TOP BAR |
|--------------|-------------|-------------|-------------|-------------|-------------|------------------|
| H ≤ 7' | #4@12"OC | #4@12"OC | #4@12"OC | #4@12"OC | #4@12"OC | #4 |
| 7' < H ≤ 8' | #4@12"OC EF | #4@12"OC EF | #4@12"OC EF | #4@12"OC EF | #4@12"OC EF | #4 |
| 8' < H ≤ 10' | #5@12"OC EF | #5@6"OC EF | #5@12"OC EF | #5@12"OC EF | #5@12"OC EF | #5 |



DETAIL C

| | | | |
|---------------------|----|--------------|------|
| DATE: 09/22/2007 | | NOT TO SCALE | |
| REVISION | BY | APPROVED | DATE |
| | | | |
| | | | |
| | | | |

CITY OF ELK GROVE - PUBLIC WORKS

**INLET PIPE HEADWALL
WINGWALL STRUCTURE
(SHEET 2 OF 2)**

APPROVED BY:

Paul M. Muddoch

CITY ENGINEER

10/24/2018

DATE



DRAWING NUMBER

SD - 29.2