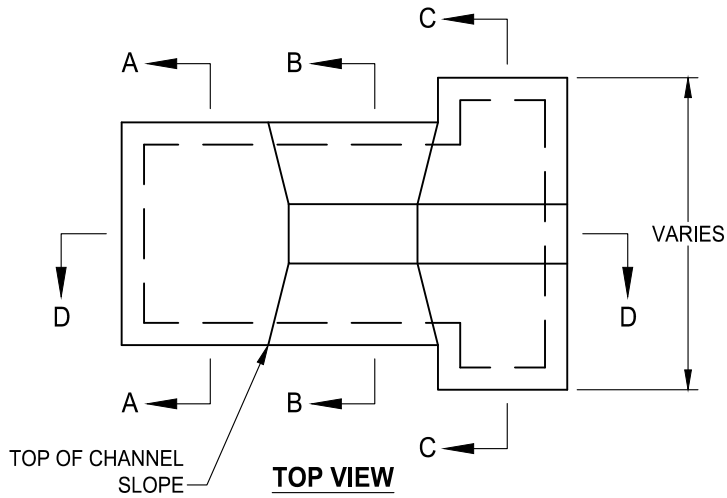
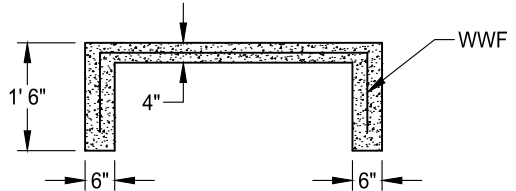


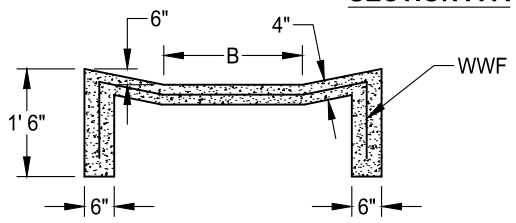
FRONT VIEW



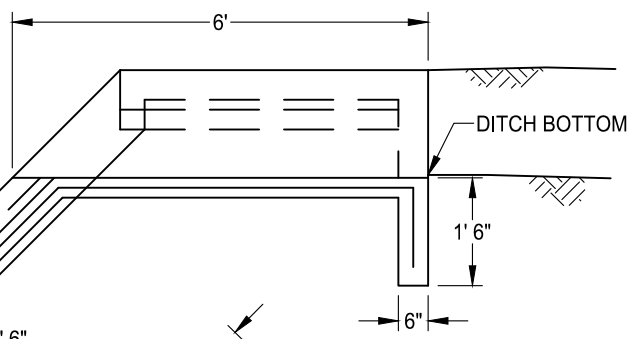
TOP VIEW



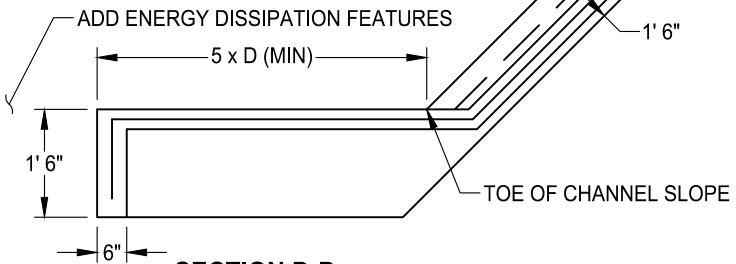
SECTION A-A



SECTION B-B



SECTION C-C



SECTION D-D

NOTES:

1. USE CLASS "B" CONCRETE OR GROUTED COBBLES AS SPECIFIED.
2. 6" x 6" -W6 x W6 WWF THROUGHOUT CONCRETE.
3. ON LINED CHANNELS APRON SHALL CONNECT TO SIDE LINING.
4. B = DITCH BOTTOM WIDTH OR AS SHOWN ON PLANS.
5. D = DITCH WATER DEPTH PLUS ONE FOOT OF FREEBOARD.
6. ADD ENERGY DISSIPATION FEATURES SUCH AS COBBLES, RIP-RAP, OR MOLDED CONCRETE AT END OF APRON.

DATE: 09/22/2017		NOT TO SCALE	
REVISION	BY	APPROVED	DATE

CITY OF ELK GROVE - PUBLIC WORKS

DITCH DISCHARGE CONTROL AND APRON

APPROVED BY:
Paul Mulock
CITY ENGINEER

10/24/2018
DATE

DRAWING NUMBER
SD - 27

