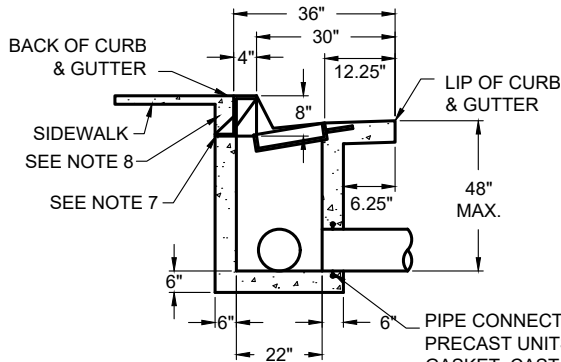
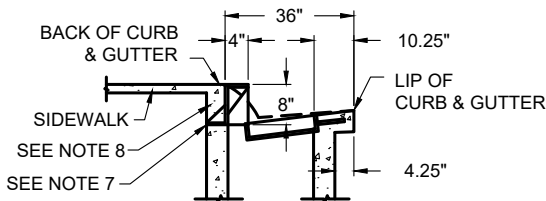
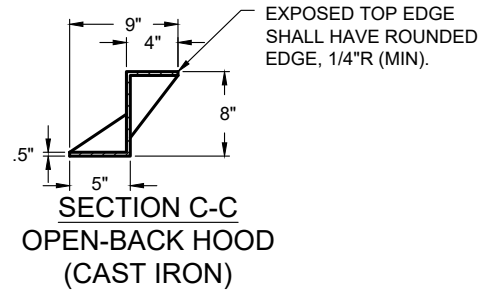


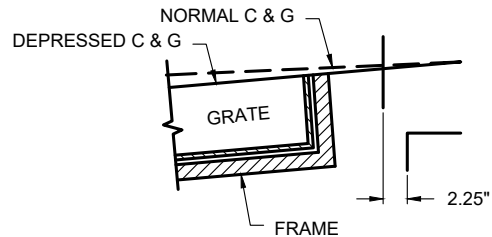
SECTION B-B



**SECTION A-A
TYPE 2-VERTICAL C&G**



**SECTION A-A
TYPE 1A - ROLLED C&G**



**CURB AND GUTTER
WITH FRAME DETAIL**

NOTES

- STANDARD DEPRESSION FOR INLET IS 1-1/2" AND LIP OF GUTTER MUST BE SET BACK 3" FROM GUTTER FLOW LINE.
- FRAME AND GRATE SHALL CONFORM TO STANDARD DRAWINGS SD-14 AND SD-15.
- OPEN-BACK HOOD SHALL BE H-20 RATED.
- EXPOSED EDGES SHALL HAVE A 1/8" R (MINIMUM).
- AN EDGING TOOL SHALL BE USED ON ALL EDGES WHERE THE CONCRETE SIDEWALK AND CURB MEET THE TOP OF THE HOOD.
- ALL EXPOSED PARTS TO BE HOT DIP GALVANIZED PER ASTM A123, AFTER FABRICATION.
- SEE SD-12.1 FOR INSTALLATION OF INLETS AT DETACHED SIDEWALKS.
- INCREASE SIDEWALK THICKNESS TO 8" IN ORDER TO ANCHOR CAST IRON HOOD AND INLET WALL. WIDTH TO BE 6" MINIMUM.
- WHEN MORE THAN ONE GRATE IS PROPOSED, STD DWG SD-16 FOR SUPPORT ASSEMBLY.

DATE: 09/22/2017		NOT TO SCALE	
REVISION	BY	APPROVED	DATE

CITY OF ELK GROVE - PUBLIC WORKS

APPROVED BY:
Paul Murock
CITY ENGINEER
10/24/2018
DATE

**DROP INLET
TYPE B**



DRAWING NUMBER

SD - 12