

# Elk Grove 2021 Redistricting

March 23, 2022

Doug Johnson and Doug Yoakam  
National Demographics Corporation

# Redistricting Rules and Goals

## 1. Federal Laws

- ❑ **Equal Population**
- ❑ **Federal Voting Rights Act**
- ❑ **No Racial Gerrymandering**



## 2. California Criteria for Cities

1. **Geographically contiguous**
2. **Undivided neighborhoods and “communities of interest”**  
(Socio-economic geographic areas that should be kept together)
3. **Easily identifiable boundaries**
4. **Compact**  
(Do not bypass one group of people to get to a more distant group of people)

### **Prohibited:**

“Shall not favor or discriminate against a political party.”

## 3. Other Traditional Redistricting Principles

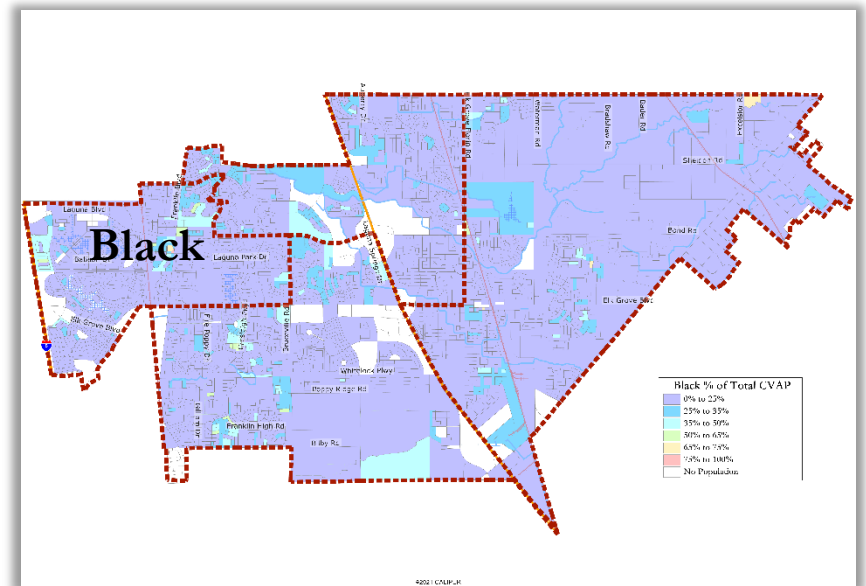
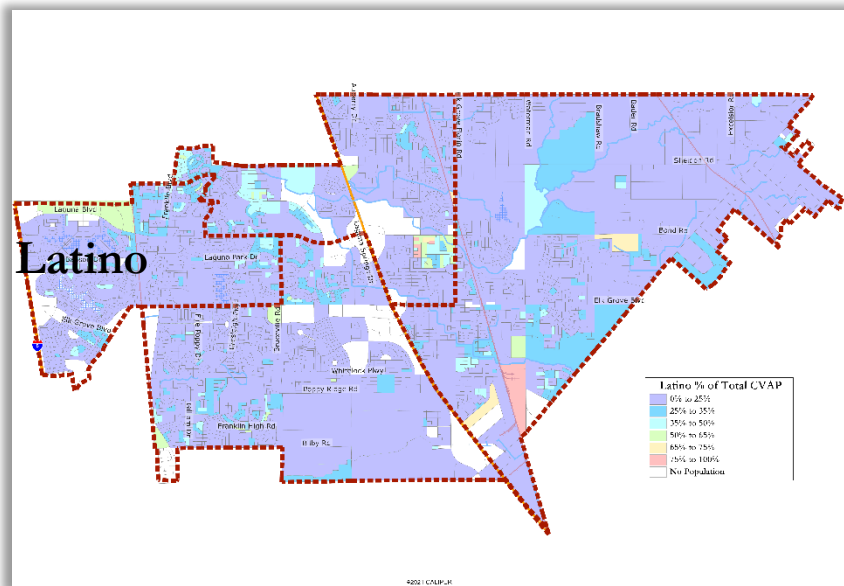
**Minimize voters shifted to different election years**

**Respect voters’ choices / continuity in office**

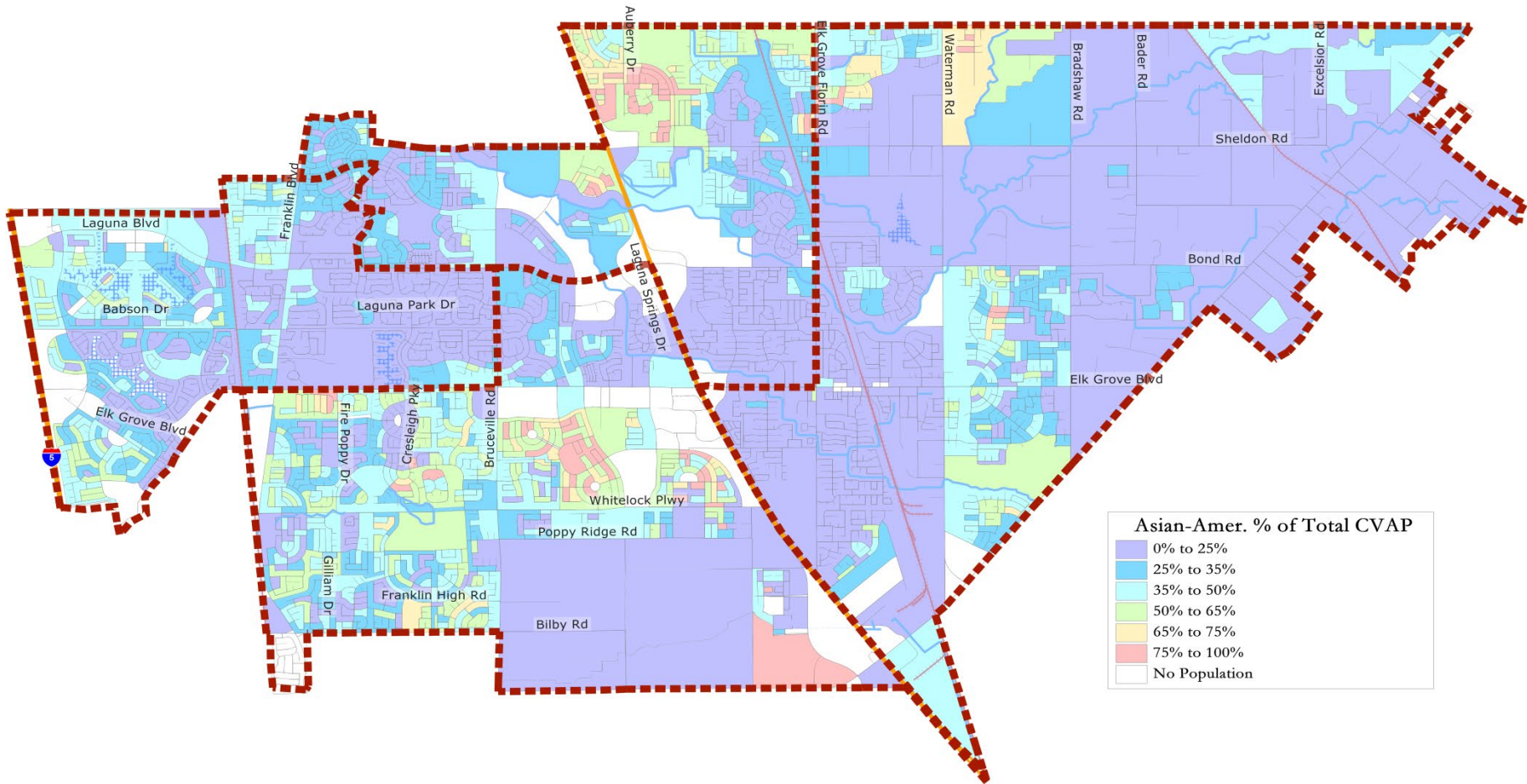
**Future population growth**

**Preserving the core of existing districts**

# Protected Class CVAP

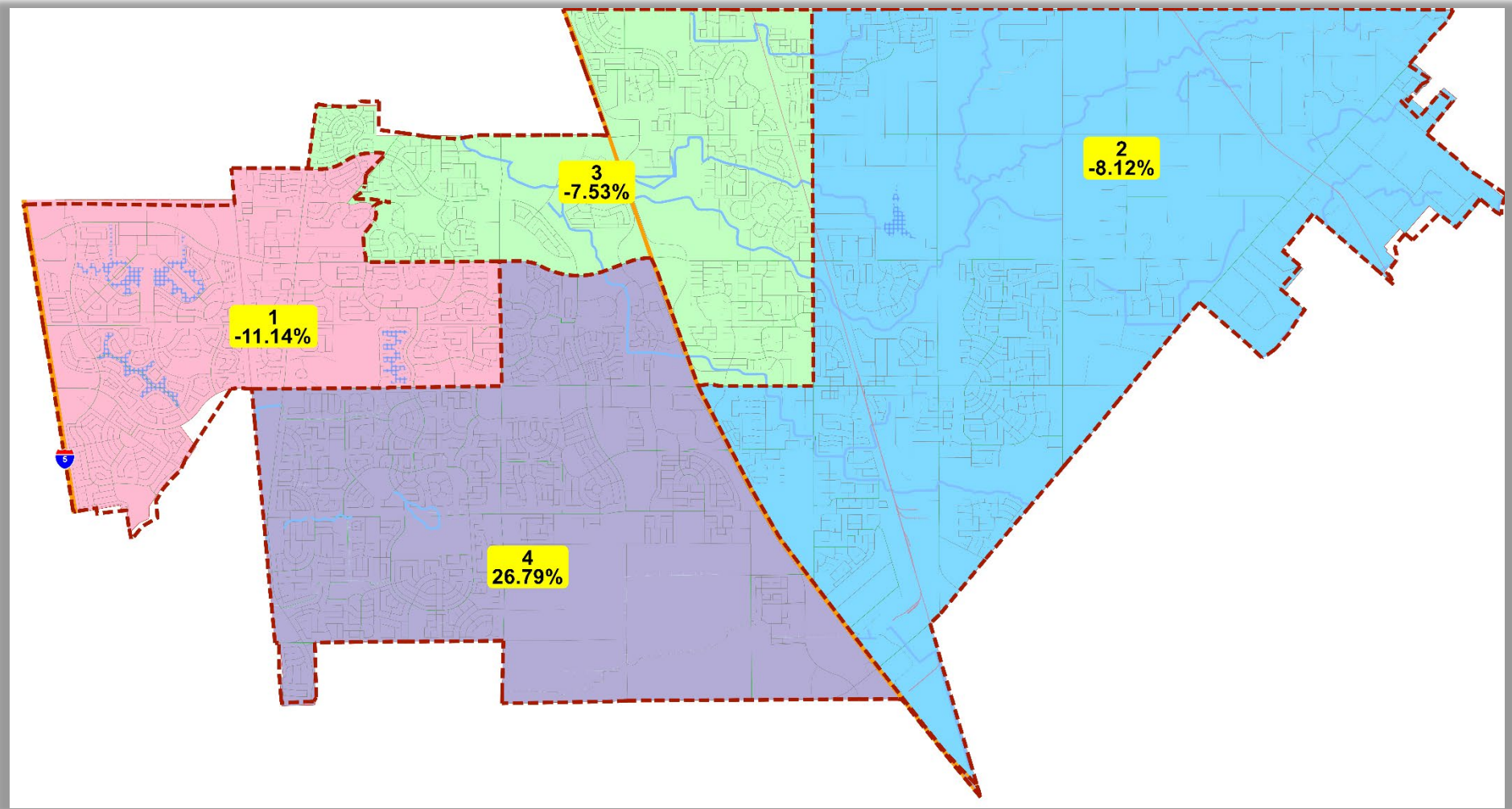


# Asian American CVAP



©2021 CALIPER

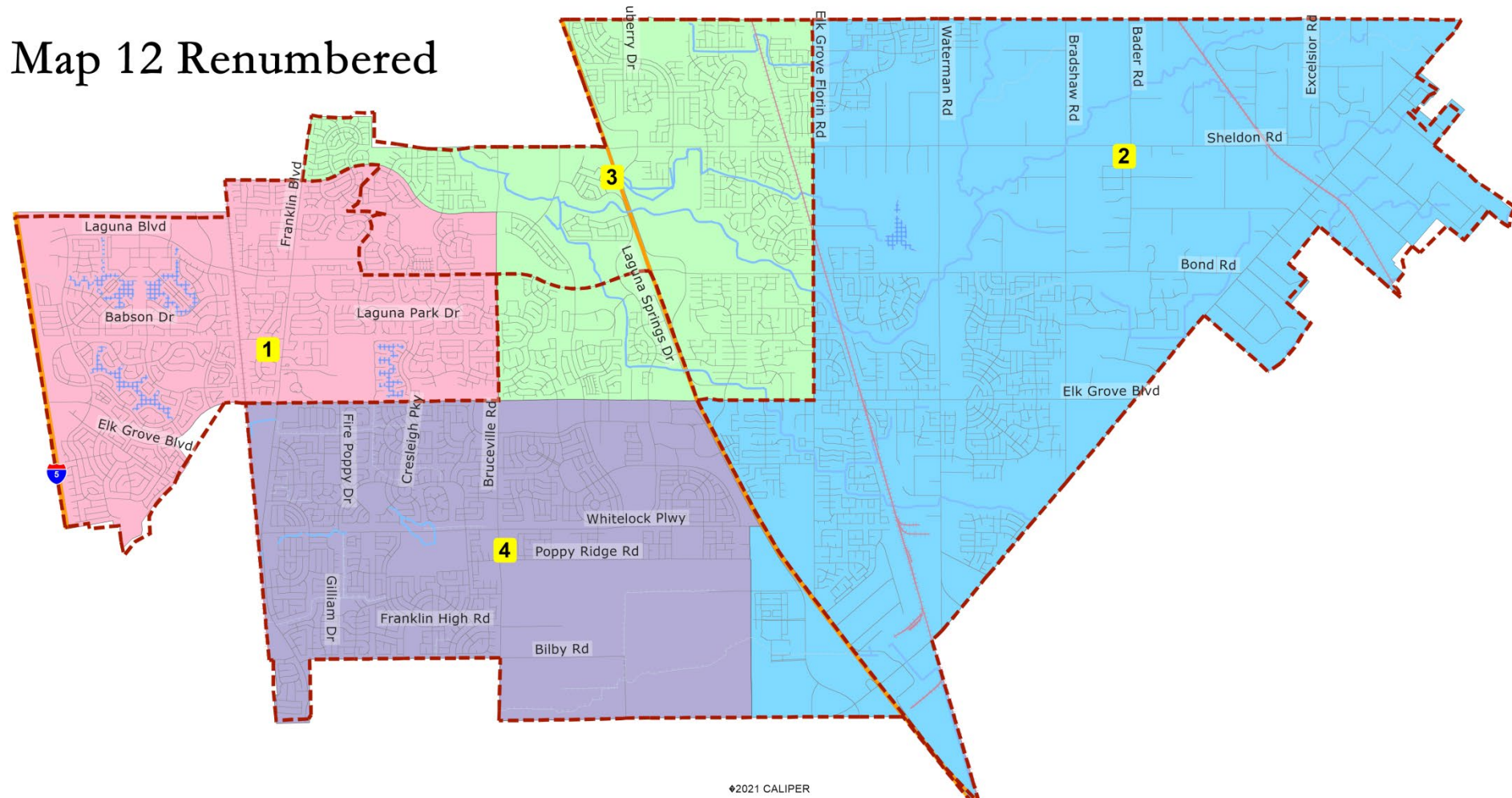
# Existing Districts



Ideal: 44,141	1	2	3	4	Total
Total Pop	39,222	40,558	40,817	55,965	176,562
Deviation from ideal	-4,919	-3,583	-3,324	11,824	16,743
% Deviation	-11.14%	-8.12%	-7.53%	26.79%	<b>37.93%</b>

# Map #12 (renumbered)

Map 12 Renumbered

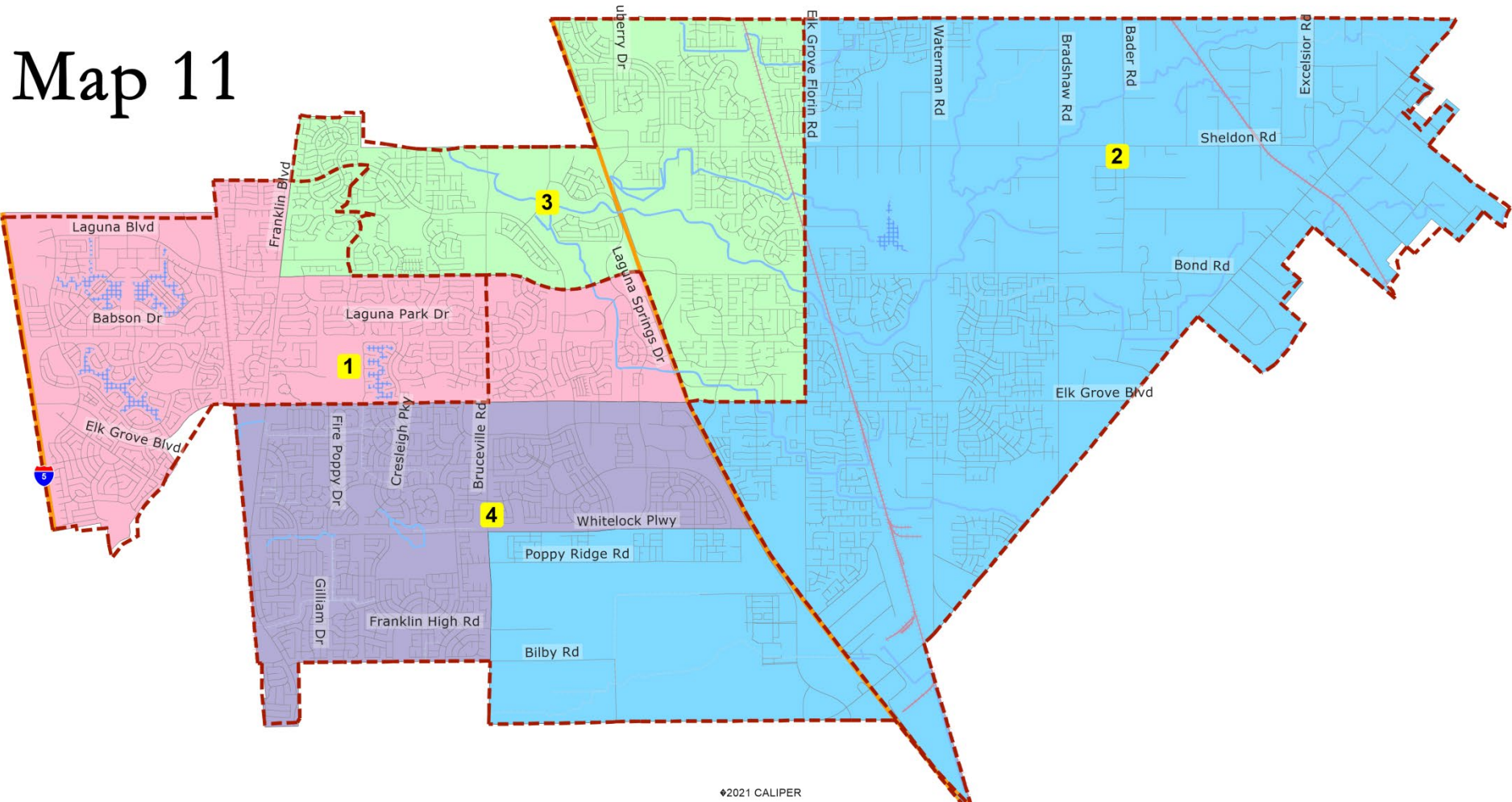


# Map #12 Statistics

Map 12 Renumbered								
District			1	2	3	4	Total	
	Total Pop		44,354	41,882	44,586	45,740	176,562	
	Deviation from ideal		213	-2,259	445	1,599	3,858	
	% Deviation		0.48%	-5.12%	1.01%	3.62%	8.74%	
Total Pop	% Hisp		20.90%	19%	20%	16%	19%	
	% NH White		32%	39%	26%	20%	29%	
	% NH Black		12%	7%	12%	12%	11%	
	% Asian-American		30%	29%	36%	46%	35%	
Citizen Voting Age Pop	Total		31,165	27,847	30,995	24,300	114,307	
	% Hisp		17%	14%	18%	14%	16%	
	% NH White		41%	50%	36%	30%	39%	
	% NH Black		14%	10%	14%	14%	13%	
	% Asian/Pac.Isl.		27%	24%	31%	40%	30%	

# Map #11

## Map 11



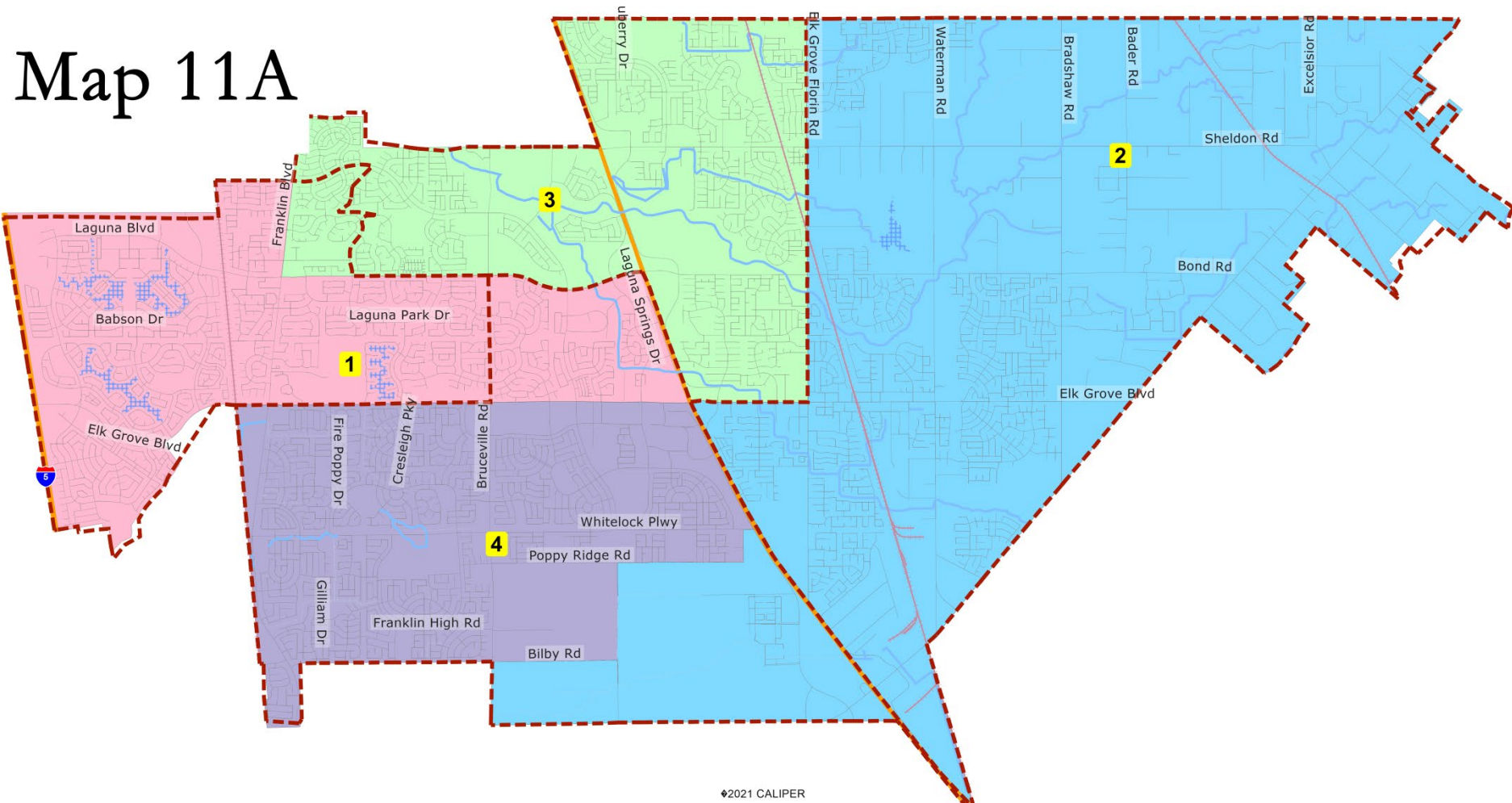


# Map #11 Statistics

Map 11								
District			1	2	3	4	Total	
	Total Pop		44,999	44,376	43,941	43,246	176,562	
	Deviation from ideal		858	235	-200	-895	1,753	
	% Deviation		1.94%	0.53%	-0.45%	-2.03%	3.97%	
Total Pop	% Hisp		20.70%	19%	20%	16%	19%	
	% NH White		32%	38%	26%	21%	29%	
	% NH Black		12%	8%	12%	12%	11%	
	% Asian-American		30%	30%	35%	46%	35%	
Citizen Voting Age Pop	Total		31,722	28,441	30,438	23,705	114,307	
	% Hisp		17%	14%	19%	14%	16%	
	% NH White		41%	50%	36%	29%	39%	
	% NH Black		14%	10%	13%	14%	13%	
	% Asian/Pac.Isl.		27%	24%	31%	40%	30%	

# Map #11A

## Map 11A



# Map #11A Statistics

Map 11A								
District			1	2	3	4	Total	
	Total Pop		44,999	41,961	43,941	45,661	176,562	
	Deviation from ideal		858	-2,180	-200	1,520	3,700	
	% Deviation		1.94%	-4.94%	-0.45%	3.44%	8.38%	
Total Pop	% Hisp		20.70%	19%	20%	16%	19%	
	% NH White		32%	39%	26%	20%	29%	
	% NH Black		12%	7%	12%	12%	11%	
	% Asian-American		30%	29%	35%	46%	35%	
Citizen Voting Age Pop	Total		31,722	27,863	30,438	24,283	114,307	
	% Hisp		17%	14%	19%	14%	16%	
	% NH White		41%	50%	36%	30%	39%	
	% NH Black		14%	10%	13%	14%	13%	
	% Asian/Pac.Isl.		27%	24%	31%	40%	30%	

# Questions and Public Comments